



## 23 Kent Street, TAMWORTH, NSW 2340

### Iconic Corner Block with Timeless Character

From the moment you step through the front gate, you'll be captivated by the magnificent established gardens, where stunning Cherry Blossoms, mature Jacarandas and lush greenery create an immediate sense of warmth and tranquillity. Beautifully presented throughout, this inviting rendered double brick home effortlessly blends timeless character with comfortable family living.

Ideally positioned on an iconic corner block within walking distance to primary and secondary schools, shopping centres, medical facilities and chemists, the home retains its original charm with polished hardwood floors, picture rails and original light fittings. Filled with natural light, the front living areas enjoy peaceful views across the eastern and southern ranges while the leafy surrounds provide privacy and a welcoming atmosphere.

Offering three bedrooms and a well-appointed bathroom, the home also features an insert wood heater, underfloor natural gas heating, ducted evaporative cooling and a split-system air conditioner for year-round comfort.

Outside, the single lock-up garage offers space for a workshop or gym, while the adjoining area is ideal for a children's play space or trailer storage. The covered

**TYPE:** Auction

**INTERNET ID:** L41167724

#### **AUCTION DETAILS**

6:00pm, Thursday August 6th, 2026

#### **CONTACT DETAILS**

**Elders Real Estate  
Tamworth**

247 Peel Street  
Tamworth, NSW  
02 6766 1666

**Hayley Flemming**  
0498546523

double-bay carport, complete with charming fairy lights overhead, creates a fantastic space for entertaining or additional vehicle accommodation. The terraced backyard completes the package with established lawns, a raised vegetable garden, fire pit area and beautifully maintained gardens, making this a home you'll love from the moment you arrive.

To experience the warmth, charm and character of this beautiful home for yourself, contact Hayley Flemming today to arrange your inspection or request further information.

Register to bid here: <https://buy.realtair.com/properties/270546>

Other features: Slow Combustion Fireplace

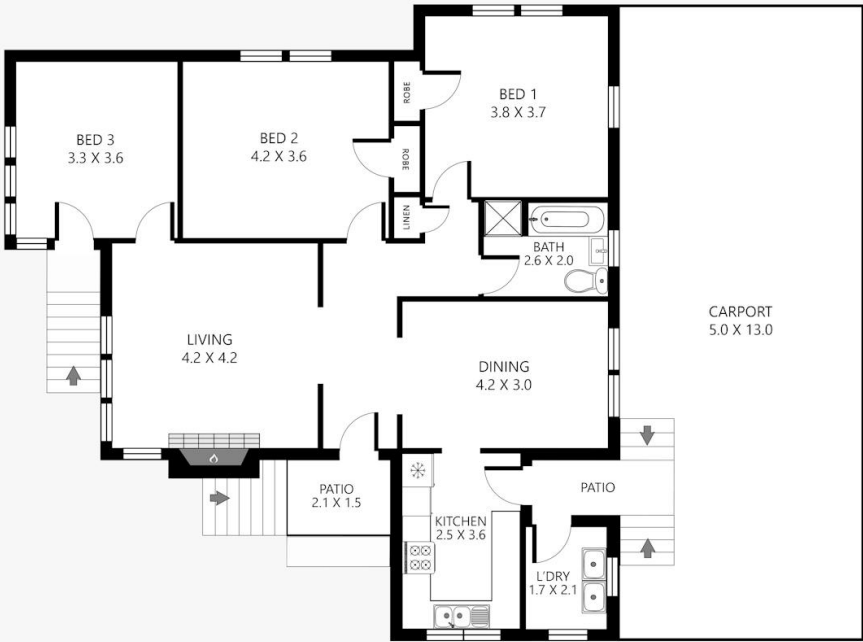
- Land Area 897.90 square metres
- Bedrooms: 3
- Bathrooms: 1
- 3 car garage
- Floorboards







# 23 Kent Street, West Tamworth



Disclaimer: This plan is not to scale and is for illustrative purposes only. Measurements are approximate only. Placement of doors, windows and all other items are approximate. Elders gives no guarantee or warranty as to the accuracy or layout. Any person using this information should rely on their own enquiries.