



1531 Musselroe Road, MUSSELROE BAY, TAS 7264

Uniquely Appealing In Every Way

Held in the same family's hands for over 110 years, this secluded holding of some 8.18ha offers exceptional views over the Musselroe Bay river channel. Zoned 'Landscape Conservation', the opportunity to own such a remarkable corner of north east Tasmania is clearly rare, rewarding and irresistible.

Two totally independent residences provide dual level floor-plans, desirable outlooks

TYPE: For Sale

INTERNET ID: R22703675

SALE DETAILS

Offers over \$599,000

The particulars contained herein are supplied for information only and shall not be taken as a representation in any respect on the part of the vendor or its agent. Interested parties should contact the nominated person or office for full and current details.

and a range of versatile original spaces. A flexible three bedroom bedroom home that provides separate living and dining areas, a central kitchen and substantial office. Upstairs a main bedroom makes the most of the location's stunning sights while a welcoming balcony brings the scenery even closer.

The lower level deck adds to the outdoors attraction of a design where the spectacular sights and the serviceable spaces are complemented by scope for updating whenever you wish.

In its own zone, the second residence's three bedroom format offers living areas on both upstairs and downstairs levels, an open-plan kitchen and a functional bathroom on a section of the block that's leased from Tasmanian Parks and Wildlife Service.

Water tanks, garages and storage sheds complete a captivating property moments from Musselroe Bay's township and boat ramp. After over a century in one family it's ready for its next phase, in yours!

- Land Area 8.18 hectares
- Bedrooms: 7
- Bathrooms: 2
- Car Parks: 4
- Double garage

CONTACT DETAILS

REX Launceston
54 Cameron Street
LAUNCESTON, TAS
03 6333 7888

Justin Wiggins
0438 522 876

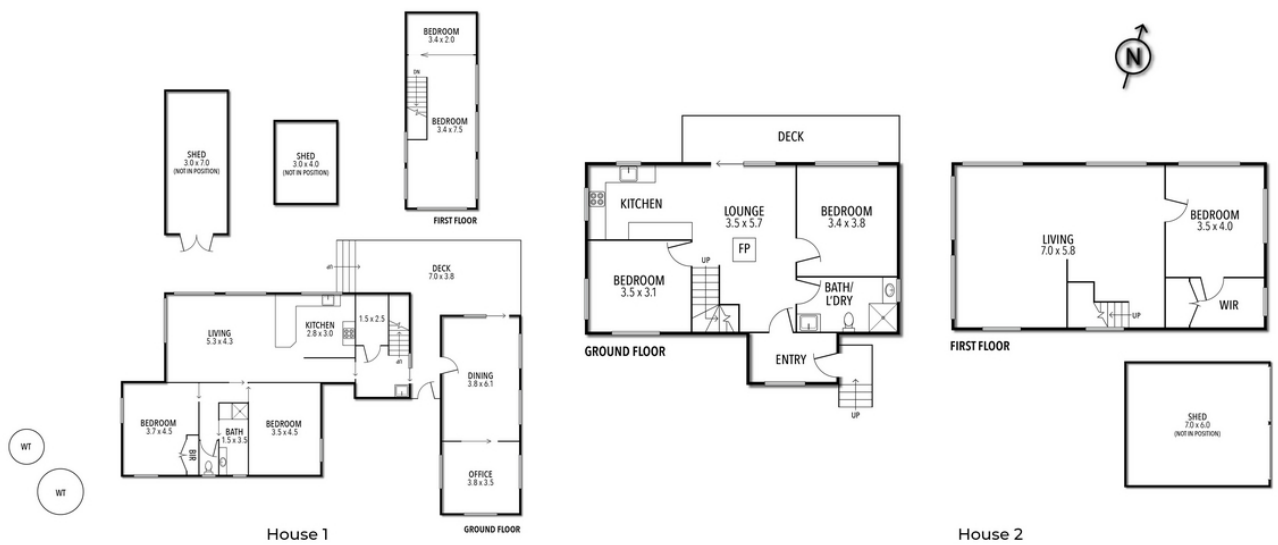








1531 Musselroe Road, Musselroe Bay



Provided by NB Media

This floor plan is a guide only & information contained within it is approximate only. Purchases are advised to verify the information. Neither the vendor, Listing agent or floor plan provider are responsible for any errors or omissions.