



## 2 Miena Drive, SORELL, TAS 7172

New house and land package offering family-friendly living

**720.00 square metres,**

Bring your property dreams to life with this brand new house and land package set within a convenient pocket of Sorell. Modern, comfortable and family-friendly living could be all yours along with an impressive list of inclusions that's sure to tick every box on your wishlist.

A striking facade will welcome you to the property and invite you to step inside and explore the single-storey layout. There are three bedrooms and two bathrooms including your master suite with a walk-in robe and an ensuite with a double vanity. Both the guest bedrooms are treated to built-in robes and are just across the hallway from the main bathroom with a separate bath, shower and water closet.

Tall 2,400mm ceilings will flow overhead including in the open-plan kitchen, dining and living area. Sure to act as the hub of everyday life, this will be a gorgeous place to gather with loved ones and relish your new laid-back lifestyle.

You can whip up your favourite meals in the quality kitchen with laminate benchtops, a good-size pantry, space for a dishwasher and a suite of Smeg appliances including an exhaust fan, an under-bench oven and hotplates. The open design will make hosting guests a breeze or you can step outside to the alfresco, with aggregate concrete paving, and relax with friends while overlooking the easy-care backyard.

**TYPE:** For Sale

**INTERNET ID:** R23621039

**SALE DETAILS**

**\$790,000 - \$820,000**

**CONTACT DETAILS**

**Elders Hobart**

5 Victoria Street

HOBART, TAS

03 6220 6999

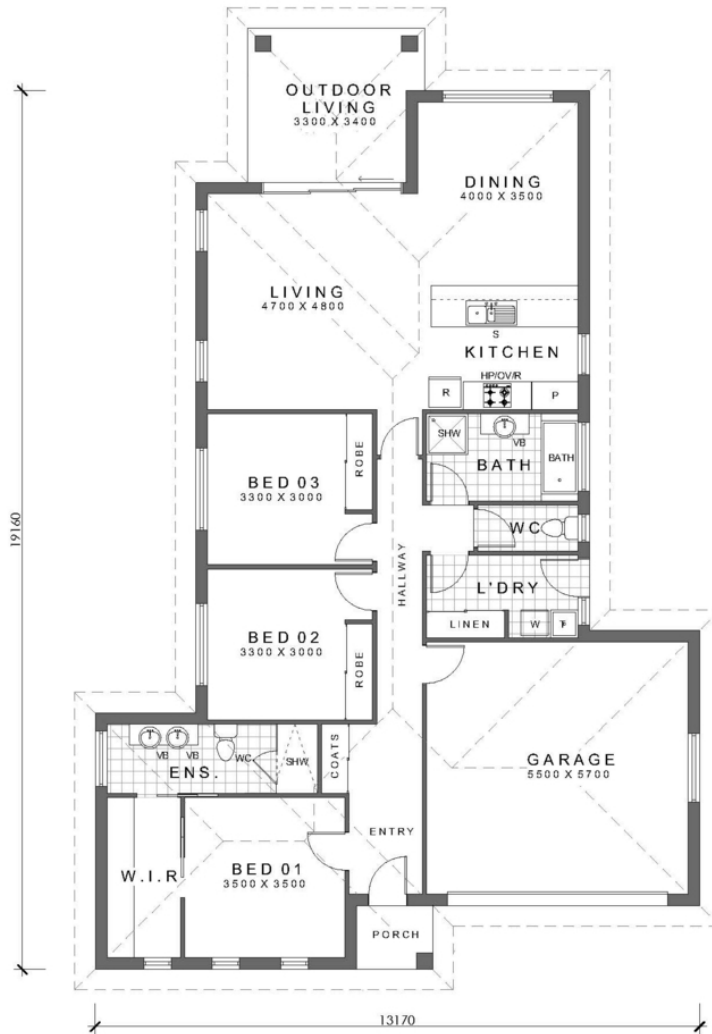
**Todd Stevenson**

0438 295 604

An internal laundry, with built-in linen storage, adds functionality to the home and there will be an attached double garage with a remote-controlled garage door. Adding to the appeal are the double-glazed aluminium windows and doors, the ceiling and external wall insulation, the on-trend bathroom fixtures and more.

You will love being so close to everything the centre of Sorell has to offer with popular shops, cafes, restaurants and amenities all conveniently located right at your fingertips.

- Land Area 720.00 square metres



FLOOR PLAN 1:100  
FLOOR AREA 174.08 SQM / 18.8SQ