



Pawleena Park, SORELL, TAS 7172

Amazing opportunity for first home buyers!

561.00 square metres,

Great opportunity for first home buyers to take advantage of the first home buyers grant of \$30,000!

Expertly designed for the modern family, this gorgeous house and land package is sure to attract a wide range of buyers. With a comfortable layout, a long list of features and an unbeatable location, you won't want to miss your chance to make this brand new home your very own.

Set right in the heart of the floorplan will be the sleek chef's kitchen overlooking the light-filled living and dining area. The tall ceilings and quality finishes add to the contemporary aesthetic while the avid cook will also be treated to Smeg appliances, soft-close cutlery drawers, a stainless steel sink, laminate benchtops and space for a dishwasher.

In true modern style, the living space flows freely to the outdoors with a treated pine deck providing the perfect place to host guests. Imagine dining alfresco or simply unwinding with a refreshing drink while admiring the easy-care backyard, it doesn't get much better than this.

Everyone can spread out and relax with three generous bedrooms including your private master suite with a walk-in robe and an ensuite. Bedrooms two and three are

The particulars contained herein are supplied for information only and shall not be taken as a representation in any respect on the part of the vendor or its agent. Interested parties should contact the nominated person or office for full and current details.

TYPE: For Sale

INTERNET ID: R23621159

SALE DETAILS

\$590,000 - \$620,000

CONTACT DETAILS

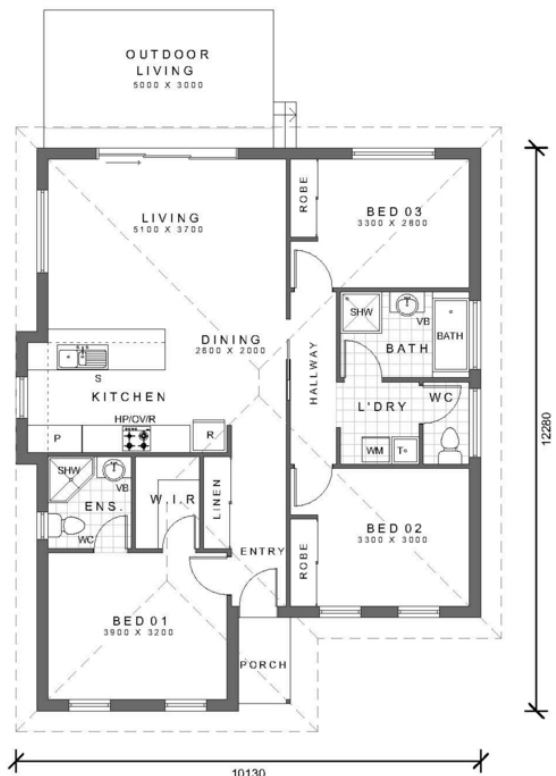
Elders Hobart
5 Victoria Street
HOBART, TAS
03 6220 6999

Todd Stevenson
0438 295 604

set within their own section of the home and enjoy built-in robes plus quick access to the main bathroom and the laundry.

As you might expect, the list of extra inclusions is impressive and offers ceiling and external wall insulation, ceramic floor tiles, a Daikin heat pump and so much more. With everything Sorell has to offer right on your doorstep, you will never have to travel far to access all you could ever need. Busy shops, popular dining options and cool cafes are nearby along with a range of services and pristine waterways. To top it all off, your brand new home will be perfectly positioned less than 25 minutes (approx.) from the vibrant centre of Hobart, ideal for those who work in the CBD.

- Land Area 561.00 square metres



FLOOR PLAN 1:100
FLOOR AREA 109.40 SQM / 11.80SQ