



## 16 Bridge Street, SWANSEA, TAS 7190

Go left, right or straight ahead to beach

This immaculately presented house sits overlooking Great Oyster Bay, Freycinet Peninsula and to the south of Swansea.

Having 4 bedrooms all with blackwood built-ins, 2 bathrooms, stair lift, open plan living, dining and blackwood kitchen, balcony with uninterrupted views of the water and peninsula you can enjoy your days just lazing away at the house or walk a few meters

**TYPE:** For Sale

**INTERNET ID:** R24251645

**SALE DETAILS**

**Offers over \$1,190,000**

over crown land to the sand of Schouten Beach.

This residence is situated on a level allotment of 713sqm and is close to hospital, shops, transport and sporting grounds.

A separate garage with toilet and shower is located next to the house so when you come off the beach you can wash off the sand and head straight indoors.

The beach and house await your inspection.

- Land Area 713.00 square metres
- Building Area: 192.00 square metres
- Bedrooms: 4
- Bathrooms: 2
- Car Parks: 6
- Double garage

#### CONTACT DETAILS

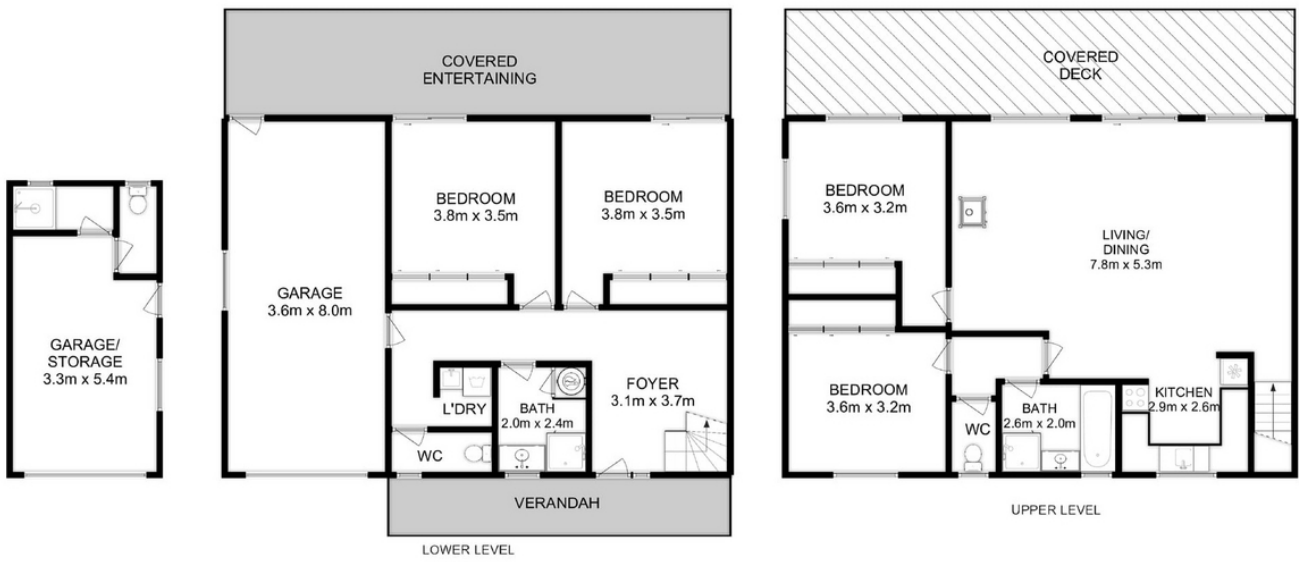
**Elders Hobart**  
5 Victoria Street  
HOBART, TAS  
03 6220 6999

**Leanne Dann**  
0417 128 048









Total Approx. Floor Area : 192 sqm  
Total Approx. Outbuilding Area : 22 sqm

All measurements are internal and approximate.  
This plan is a sketch for illustration, not valuation.  
Produced by Open2view.com