



143 East Minstone Road, SCOTTSDALE, TAS 7260

Rare, Rural And Rewarding

This stunning 62-acre property beautifully combines natural beauty with versatile potential for grazing, cropping, horticulture, or a home-based business. Just moments from Scottsdale's town center, it features a charming two-bedroom cottage equipped with an updated kitchen, quality appliances, a cozy wood heater, reverse cycle heating/cooling, and original hardwood floorboards.

TYPE: For Sale

INTERNET ID: R24277243

SALE DETAILS

Offers Over \$849,000

Essential infrastructure includes two dams, a large workshop, barn, sheep yards, a loading ramp, and several additional outbuildings. The well-fenced paddocks, productive pastures, effective windbreaks, and reliable rainfall enhance its agricultural appeal.

This fantastic investment opportunity allows for modernization of the cottage and customization of the land to fit your ambitions.

Ideal for running cattle, sheep, horses, or market gardens, as well as growing pastures or agistment, this rural lifestyle property offers a remarkable chance to embrace a rewarding country life.

Scottsdale serves as the service hub of Northeast Tasmania, located 62 km from Launceston and 34 km from Derby, famous for its mountain bike trails. Plus, it's just 25 km from the stunning beaches of Bridport and the world-class Barnbougle Dunes and Lost Farm golf courses.

- Land Area 25.95 hectares
- Bedrooms: 2
- Bathrooms: 1
- Double garage
- Double carport
- Floorboards

CONTACT DETAILS

REX Launceston
54 Cameron Street
LAUNCESTON, TAS
03 6333 7888

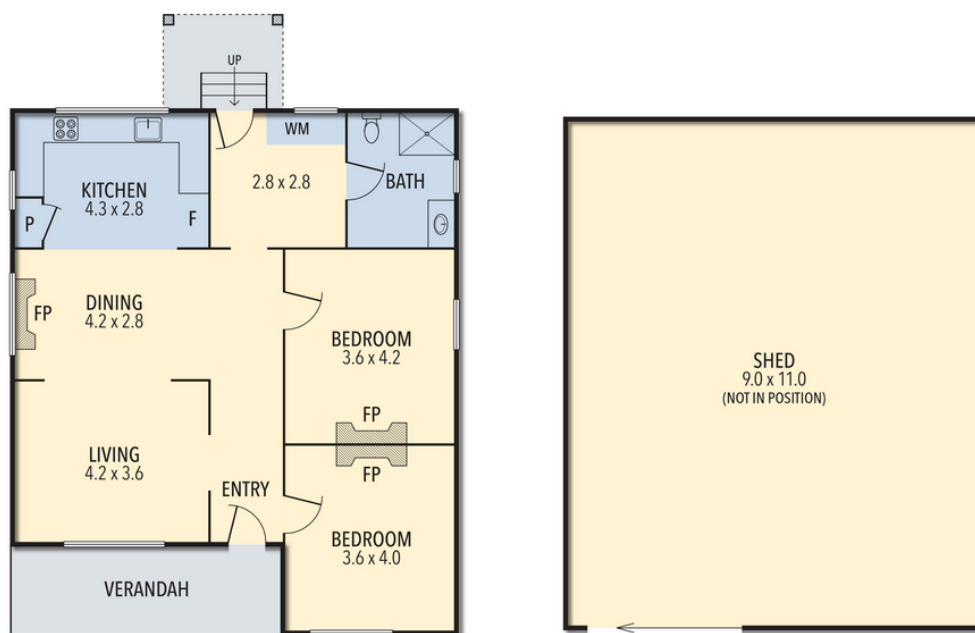
Justin Wiggins
0438 522 876











143 EAST MINSTONE ROAD, SCOTTSDALE



Plan is not to scale. The floor plan is intended as a guide only. All information is indicative and approximate. All information is to be verified on site. The vendor and/or listing agent and provider of this floor plan are not responsible for any errors and/or omissions.



Provided by NB Media

