



## 5 Rectory Street, SWANSEA, TAS 7190

### Endless potential

Wanting an older style house that is close to everything? Then have a look at this lovely property with endless potential.

There are 3 bedrooms, a separate living area, a combined kitchen / dining, a large bathroom, a laundry off the kitchen and a great entertaining area at the rear of the house, which has an entrance both sides.

**TYPE:** For Sale

**INTERNET ID:** R24279811

**SALE DETAILS**

**\$540,000**

The home is on a large level allotment of 1031 sqm, which allows to be subdivided or strata titled whatever your preference (STCA), that is fenced and offers a drive through carport, garage with shed and another separate garden shed with outdoor toilet.

The added bonus of this house is that you are a nice easy walk to RSL, restaurants, beaches and even the hospital.

Scenic views of the water can be had from this peaceful home in a very quiet street whilst on the verandah enjoying the sun.

- Land Area 1,031.00 square metre
- Building Area: 143.00 square metres
- Bedrooms: 3
- Bathrooms: 1
- Car Parks: 4
- Single garage
- Single carport

#### CONTACT DETAILS

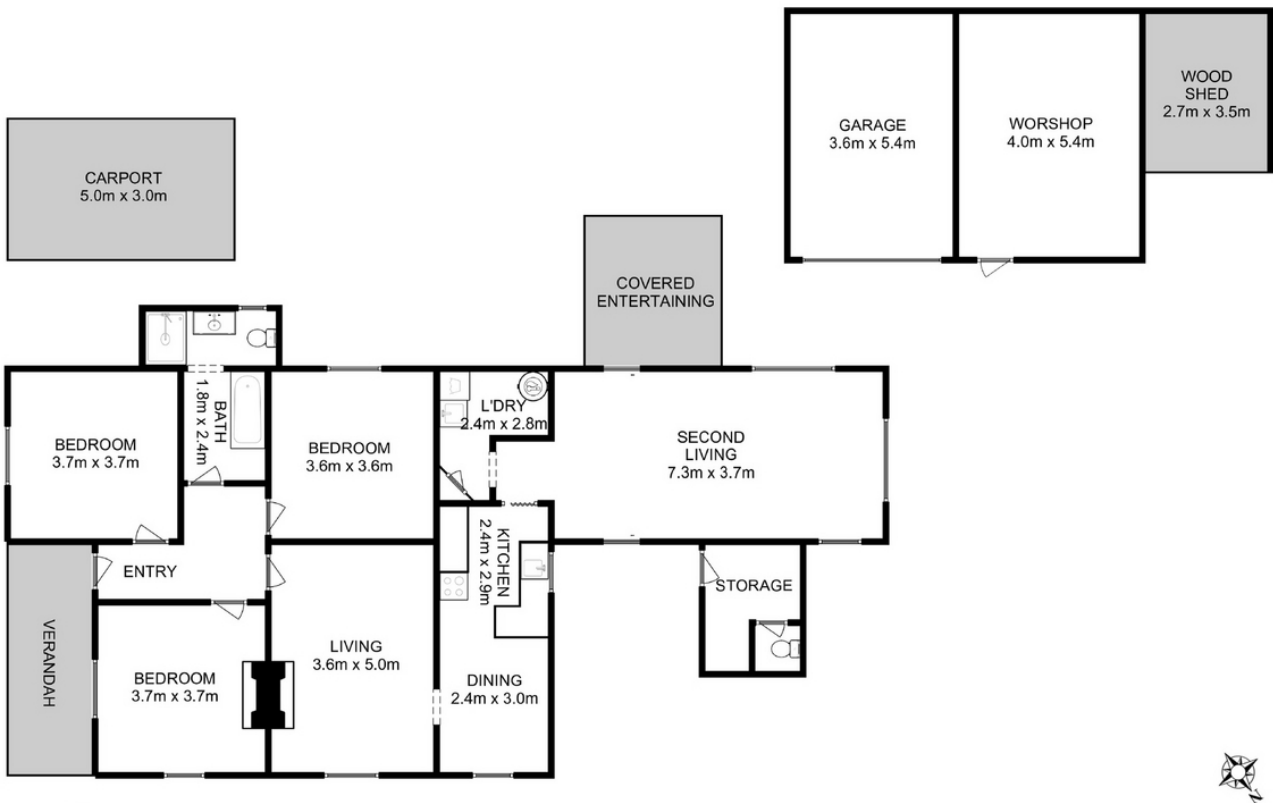
**Elders Hobart**  
5 Victoria Street  
HOBART, TAS  
03 6220 6999

**Leanne Dann**  
0417 128 048









Total Approx. Floor Area : 143 sqm  
Total Approx. Outbuilding Area : 41 sqm

All measurements are internal and approximate.  
This plan is a sketch for illustration, not valuation.  
Produced by Open2view.com