



10 Westringa Road, FERN TREE, TAS 7054

Smart, warm, architectural and energy efficient!

Nestled amidst the picturesque landscape of Fern Tree, Tasmania, 10 Westringa Road offers a serene and idyllic retreat. This stunning property, set against a breathtaking backdrop of native bush, boasts approximately 4 acres of land, providing ample space for outdoor activities and relaxation. Inside, the home is extremely comfortable and functional, featuring 3 bedrooms and 2 bathrooms. Designed with energy efficiency and fire safety in mind, the property has 6kW of solar panels, ensuring a sustainable and eco-friendly lifestyle. Additionally, the home is well-insulated with argon gas-filled

TYPE: Sold

INTERNET ID: R24305919

SALE DETAILS

Price on application

double glazing, insulation in the floors, walls, and ceiling, and electric shutters on most of the windows, providing optimal comfort and energy efficiency and a warm and cosy home.

The home is superbly built and maintained, offering a high level of quality and craftsmanship. Infrastructure and safety are key to this very safe property, with plenty of clearing, a dedicated water supply and driveway access around the home. There is also abundant storage space throughout the property, making it easy to keep organised. For casual entertaining, the home features a separate area complete with an internal fireplace, creating a cosy and inviting atmosphere. Outside, there is an enclosed vegetable garden, perfect for those who enjoy homegrown produce. Lush and vibrant, the fenced gardens are adorned with established rhododendrons, which thrive in the foothills of Kunanyi/ Mount Wellington. This creates a magical blend of native flora and exotic species, transforming the property into a botanical paradise.

Conveniently located close to the CBD and with regular public transport, 10 Westringa Road offers the perfect balance of tranquillity and accessibility. Whether you're seeking a peaceful escape or a place to connect with nature, this property is sure to captivate your heart.

- Land Area 1.66 hectares
- Building Area: 270.00 square metres
- Bedrooms: 3
- Bathrooms: 2
- Car Parks: 6
- Double garage
- Ensuite

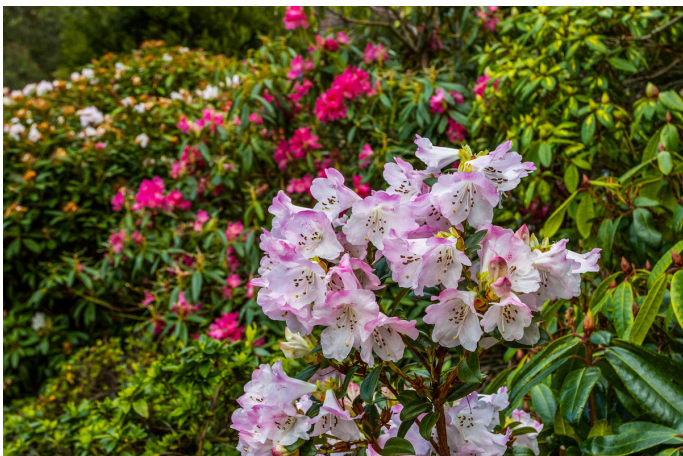
CONTACT DETAILS

Elders Hobart
5 Victoria Street
HOBART, TAS
03 6220 6999

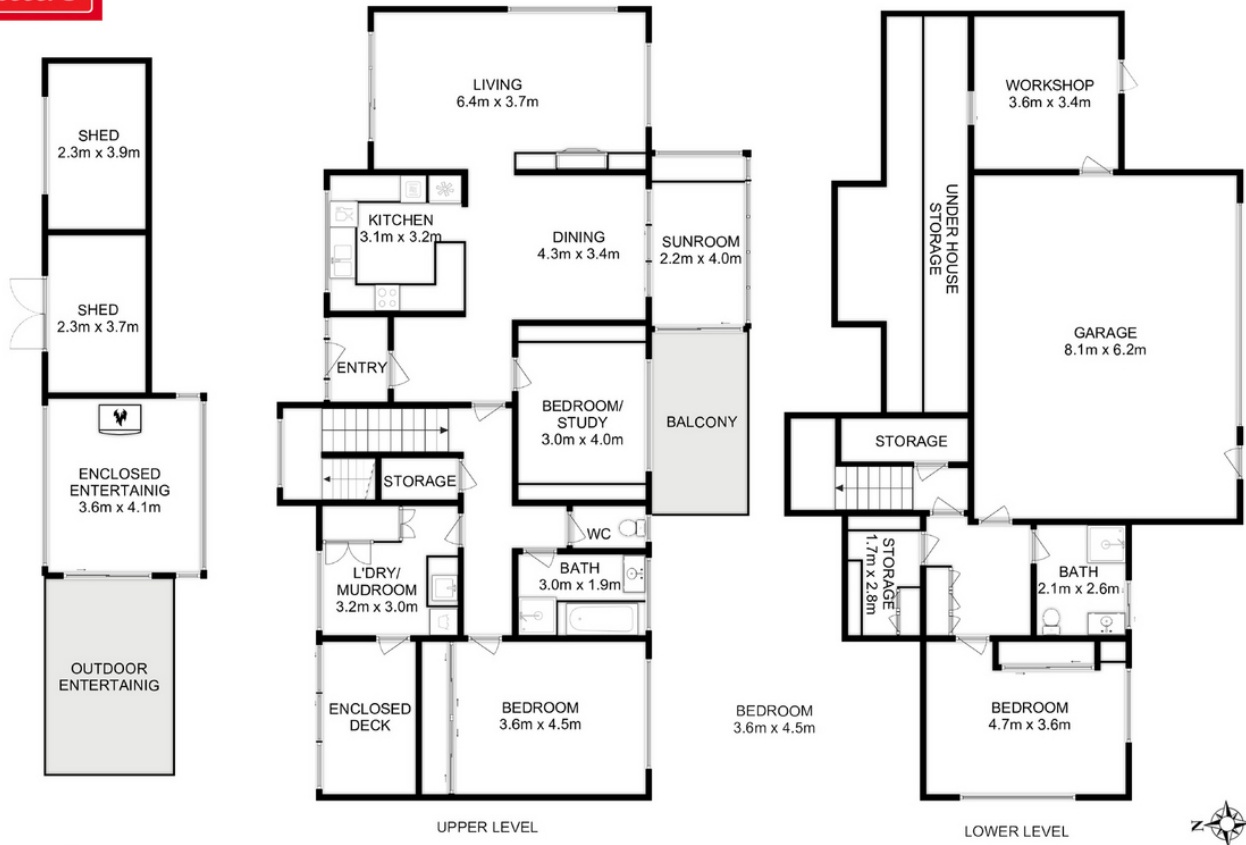
Warren Lashmar
0427 788 205











Total Approx. Floor Area (inc. Garage/Workshop) : 270 sqm
 Total Approx. Outbuilding Area : 33 sqm

All measurements are internal and approximate.
 This plan is a sketch for illustration, not valuation.
 Produced by Open2view.com