



25 Elizabeth Street, LAUNCESTON, TAS 7250

Period cottage close to the city.

A period cottage of significant character, complemented by the modern personality of updated spaces and the exceptional inner-city convenience of off-street parking for two cars, this enticing, exciting first home is also a property that boasts a long standing track record of reliable returns from an investment point of view.

The appeal from both these perspectives is enhanced by a sensational location that puts Launceston's CBD, the hospital precinct, Princes Square and countless cafes within its sphere.

Two double bedrooms that deliver desirable accommodation are served by a modern bathroom while the living/dining area's welcoming proportions include an efficient heat pump, original lead-light windows and high ceilings.

A kitchen defined by modern freshness features distinctive red splashbacks, quality appliances and stylish cabinetry, further enhancing this home's exceptional entry level attractiveness on a low-maintenance allotment that's completed by the side drive's vehicle accommodation.

A property to capture today, appreciate without delay and enjoy success as a first address or astute investment, equally attractive from an Airbnb perspective in an inner-city address that may also be considered as a townhouse development site, STCA.

- Land Area 180.00 square metres
- Building Area: 100.00 square metres
- Bedrooms: 2
- Bathrooms: 1
- Car Parks: 2

**TYPE:** Sold

**INTERNET ID:** R24311294

**SALE DETAILS**

Offers over \$525,000

**CONTACT DETAILS**

**REX Launceston**  
54 Cameron Street  
LAUNCESTON, TAS  
03 6333 7888

**Doug Marshall**  
0418 527 612

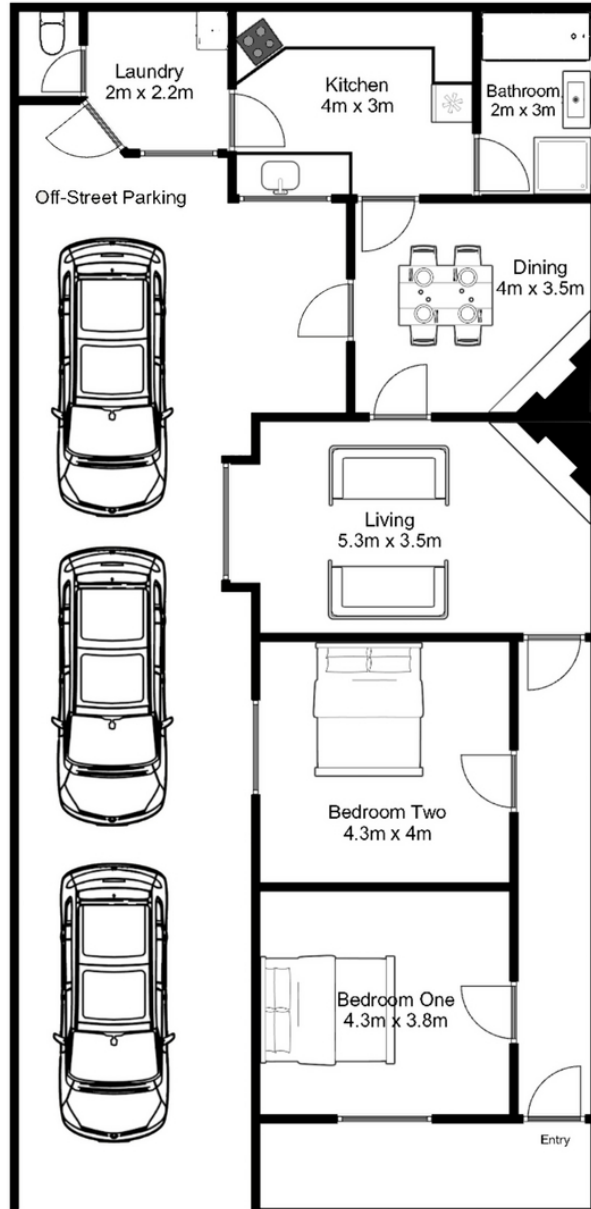












All particulars contained herein whether by measurement or visual representation are for general information only and do not constitute any representation by the vendor or by its agents or representations. No warranty is given either expressly or implied and all interested parties should not rely on the information contained herein.