



22 Paperbark Crescent, KINGSTON, TAS 7050

Discover your dream home in Kingston

Spread across two spacious levels and framed by the stunning backdrop of kunanyi/Mount Wellington, this exceptional property invites you to experience warmth and sophistication at its finest. Step through the charming alfresco patio into an open-plan lounge and dining area, flooded with natural light from expansive sliding glass doors that seamlessly connect to your sunny courtyard.

TYPE: Sold

INTERNET ID: R24320721

SALE DETAILS

Offers over \$745,000

This home's functional layout features a designer kitchen that boasts modern finishes and high-quality appliances, making it perfect for both everyday living and entertaining.

Located in the vibrant suburb of Kingston, this sun-drenched property offers a unique opportunity to enjoy a peaceful, fulfilling lifestyle. Its appealing aesthetics and thoughtfully designed interiors are sure to enchant anyone seeking comfort and convenience in this picturesque region.

You'll appreciate the proximity to a wealth of amenities, including medical facilities, schools, parks, shopping centers, and recreational facilities—all within easy reach. With public transport at your doorstep getting around is a breeze. Plus, the new Kingston park is a stroll away and Kingston Beach just a short drive, ideal for leisurely strolls by the shore.

Kings Quarter is the most innovative residential development in Tasmania in recent years. It represents the best of inner urban contemporary, convenient living. Living here also allows rightful access to the Kings Quarter Community Clubhouse. Truly a special privilege. Don't miss your chance to call this beautiful property home—schedule a viewing today!

Property Highlights:

- Body Corporate covers building insurance for all homes and common property
- Ongoing maintenance of front gardens, landscaped verges, and streetscapes, ensuring a pristine environment
- Deluxe kitchen featuring engineered stone benches and soft-close cabinetry
- Top-of-the-line Fisher & Paykel induction cooktop, built-in oven, microwave, and fully integrated dishwasher
- Energy-efficient double-glazed windows and doors
 - Land Area 167.00 square metres
 - Building Area: 160.00 square metres
 - Bedrooms: 3
 - Bathrooms: 2
 - Car Parks: 1
 - Double garage

CONTACT DETAILS

Elders Hobart
5 Victoria Street
HOBART, TAS
03 6220 6999

Mickey White
0419 233 169



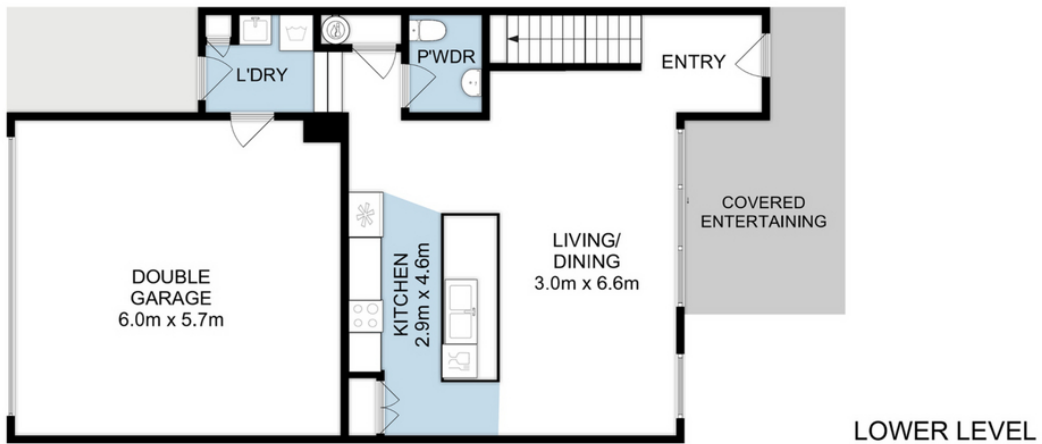
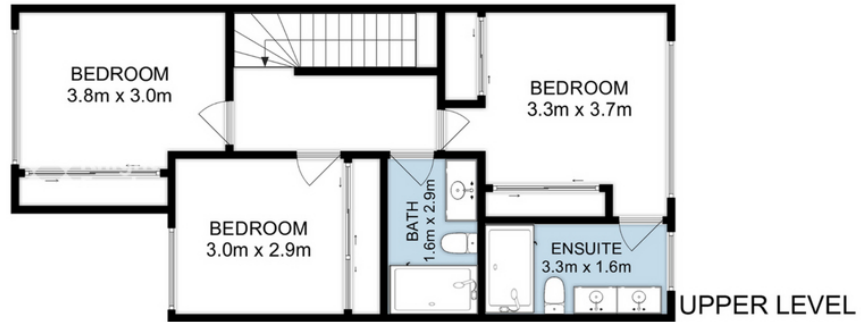








KINGSTON
22 Paperbark Crescent
House Area : 160 sqm



IMPORTANT: measurements are approximate-interested parties need to verify