



8 Sunny View Avenue, SWANSEA, TAS 7190

Spacious and sturdy

This robust and spacious double storey family home is close to beaches, amenities and sits on a level and fully fenced 953m2 block.

Upstairs features a large kitchen, open living/dining with a woodfire, reverse cycle heatpump, 3 generous bedrooms, bathroom with spa and a deck with views across Great Oyster Bay to the Hazards at Coles Bay and Schouten Island.

TYPE: For Sale

INTERNET ID: R24384549

SALE DETAILS

Offer over \$925,000

Downstairs, through a large entranceway, is a vast space, with another 2 big bedrooms, bathroom/laundry, and a kitchenette, which could be used as a gym, rumpus room or teenage retreat. Due to its size and layout, it would be possible to have both levels independent of one another.

Outside, there is a double garage and a newly renovated 1 bedroom unit, with kitchen and bathroom to use as extra accommodation for guests, or as a granny flat.

The backyard is low maintenance, with various fruit trees, and room to move.

This impressive home is just waiting for you to make it yours.

- Land Area 953.00 square metres
- Building Area: 278.00 square metres
- Bedrooms: 6
- Bathrooms: 3
- Car Parks: 4
- Single garage

CONTACT DETAILS

Elders Hobart
5 Victoria Street
HOBART, TAS
03 6220 6999

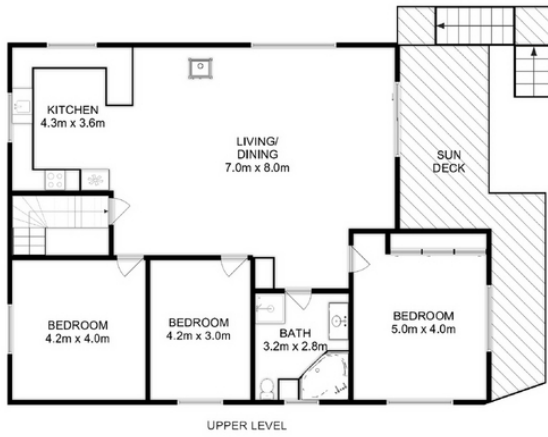
Leanne Dann
0417 128 048











UPPER LEVEL



LOWER LEVEL



STUDIO



Total Approx. Floor Area : 278 sqm
 Total Approx. Outbuilding Area : 81 sqm

All measurements are internal and approximate.
 This plan is a sketch for illustration, not valuation.
 Produced by Open2view.com