



8 Rectory Street, SWANSEA, TAS 7190

Location, location, location

This lovely house has that homely, relaxed aura with it.

It features 2 bedrooms, main with built-ins and a second lounge or indeed 3rd large bedroom, bathroom, updated kitchen in last 2 years including appliances, large lounge with wood heater, dining nook and porch with toilet and separate pantry/storage area.

TYPE: Sold

INTERNET ID: R24419670

SALE DETAILS

\$550,000

The large 1077 sqm block is fully fenced, with a carport, garage and shed/workshop. The property is on town water and sewerage and has a freshwater tank of 1000lt.

This is a lovely north-facing house in a great location, within walking distance to shops, sports facilities and most importantly the beaches on those hot summer days.

- Land Area 1,077.00 square metre
- Building Area: 138.00 square metres
- Bedrooms: 3
- Bathrooms: 1
- Car Parks: 4
- Single garage
- Single carport

CONTACT DETAILS

Elders Hobart
5 Victoria Street
HOBART, TAS
03 6220 6999

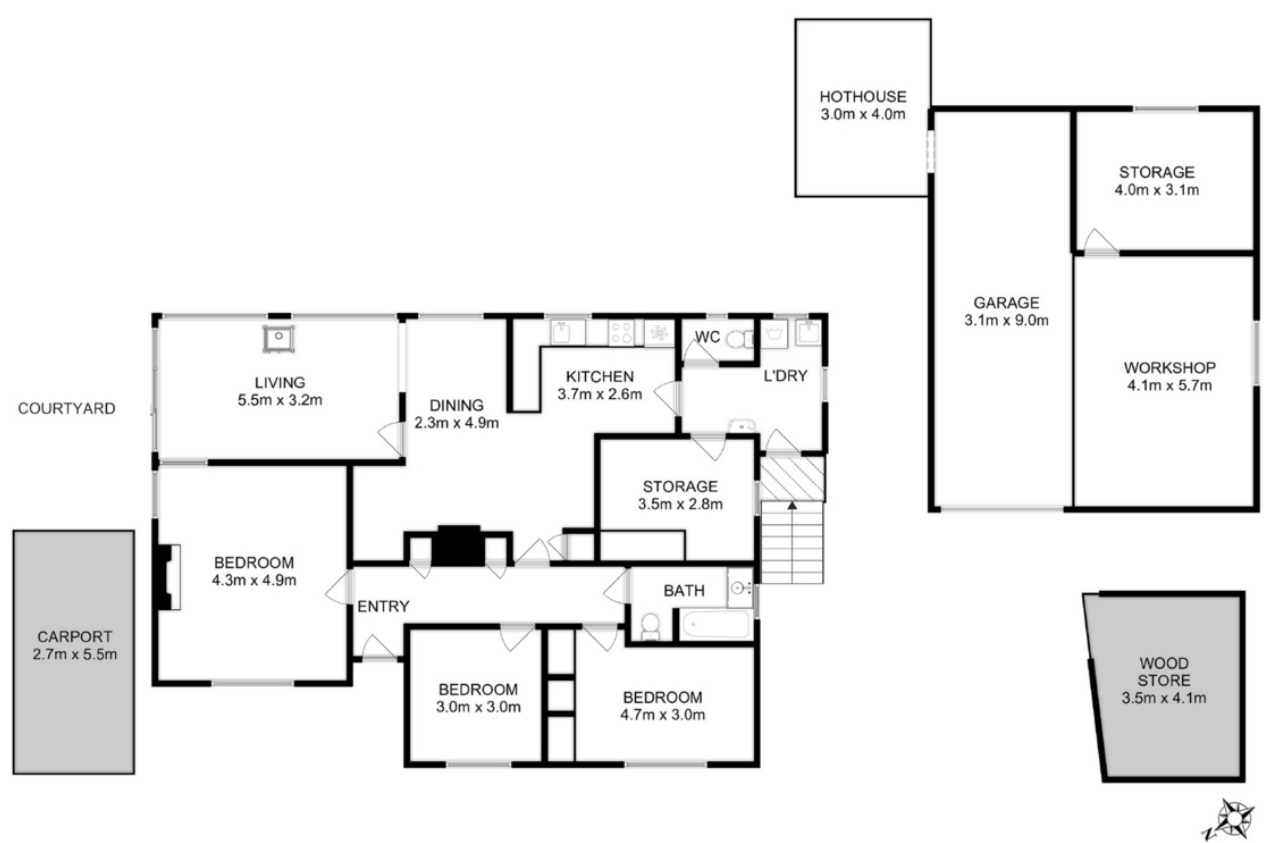
Leanne Dann
0417 128 048











Total Approx. Floor Area : 138 sqm
Total Approx. Outbuilding Area : 66 sqm

All measurements are internal and approximate.
This plan is a sketch for illustration, not valuation.
Produced by Open2view.com