



12 Spotswood Drive, SCOTTSDALE, TAS 7260

Enjoy Or Invest, Either Is Best

This fully renovated three bedroom home provides precisely the style and space that ensure enjoyment as a first family address while also clearly delivering an ideal opportunity for investors to pursue performance and downsizers to appreciate the proportions.

TYPE: Sold
INTERNET ID: R24445666
SALE DETAILS

The particulars contained herein are supplied for information only and shall not be taken as a representation in any respect on the part of the vendor or its agent. Interested parties should contact the nominated person or office for full and current details.

An open-plan living and dining area defined by high quality low-maintenance flooring and the efficient comfort of reverse cycle heating/cooling incorporates a kitchen where a central island bench, stainless steel appliances and stylish tiled splashbacks reflect an emphasis on excellence.

A totally new bathroom contributes designer freshness, a dual vanity and impressive attention to detail to the accommodation of three double bedrooms while a separate laundry with timber surfaces, distinctive tiles and lots of storage further enhances the floor-plan's user friendliness.

An undercover entertaining area that's fully enclosed from the weather to offer the option of enjoyment in any season represents a brilliant example of the outdoor room, adjacent to a sheltered patio.

A substantial double garage/workshop/mancave served by its own toilet complements this home's level, fully fenced block in a location that means shopping, schools, community facilities and recreation choices are always easily reached.

Scottsdale is the Services Hub of the Northeast of Tasmania, located 62kms from Launceston and 34Kms from Derby, home of the world-renowned mountain bike trails. Also located just 25kms from the beaches of Bridport and world class Barnbougle Dunes & Lost Farm golf courses.

- Land Area 803.00 square metres
- Building Area: 95.00 square metres
- Bedrooms: 3
- Bathrooms: 1
- Double garage

Offers Over \$475,000

CONTACT DETAILS

REX Launceston
54 Cameron Street
LAUNCESTON, TAS
03 6333 7888

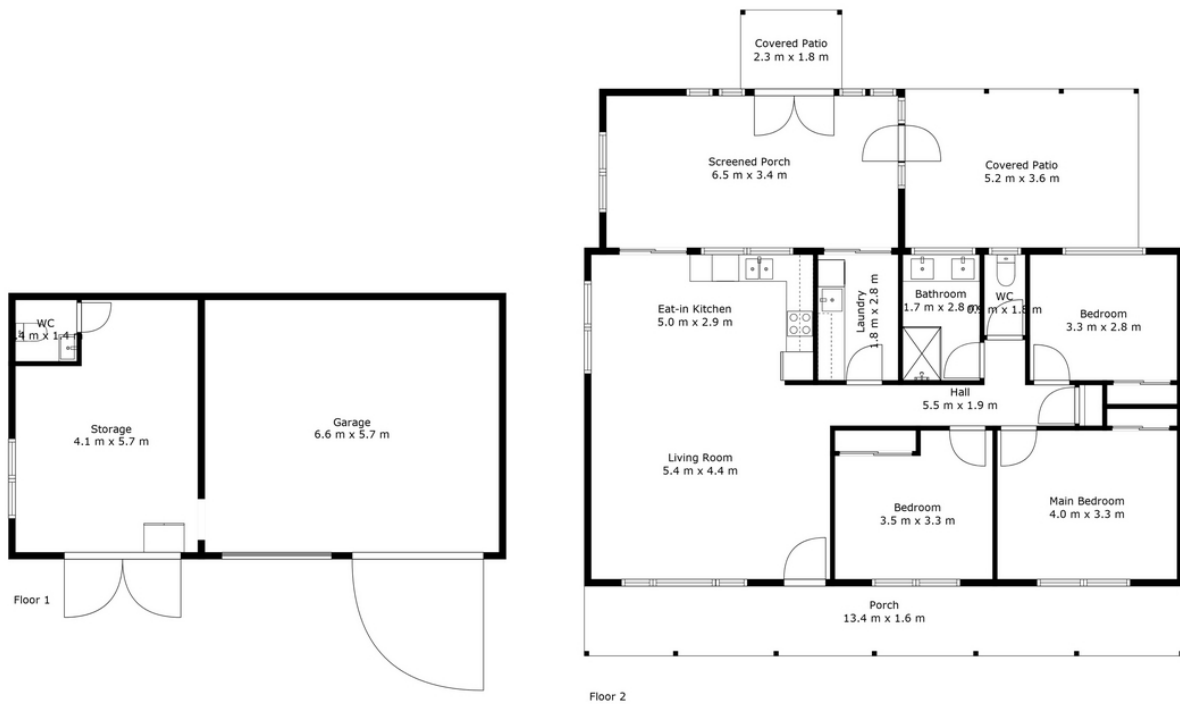
Justin Wiggins
0438 522 876











12 SPOTSWOOD DRIVE, SCOTTSDALE



Plan is not to scale. The floor plan is intended as a guide only. All information is indicative and approximate. All information is to be verified on site. The vendor and/or listing agent and provider of this floor plan are not responsible for any errors and/or omissions.

Provided by NB Media

