



## 7 Trillick Court, SORELL, TAS 7172

### Modern townhouse living

Situated in the Salina Estate complex, this contemporary designed stand-alone townhouse offers comfort, convenience, and a generous three bedroom floor plan over two levels.

The lower level features two of the bedrooms, both with built-in robes, serviced by a central bathroom along with the separate laundry. Upstairs, the spacious master

**TYPE:** Sold

**INTERNET ID:** R24457628

**SALE DETAILS**

**Offers over \$525,000**

bedroom suite boasts a walk-in robe and a private ensuite.

An inviting open-plan living area is the heart of the home, with the modern kitchen separated by an island bench, creating a seamless flow to the lounge and dining areas. Bi-fold sliding doors lead to an undercover deck, where you can take in the lovely views of Orielton Lagoon.

Enjoy year-round comfort & energy efficiency with reverse cycle heating & cooling, double-glazed windows, heat pump hot water system, and all-day sun. The secure, level backyard with an entertaining deck and easy-care gardens provides a private outdoor retreat.

With double carport undercover parking at your doorstep and located just minutes from shopping and services in ever growing Sorell, the property is an effortless 25km highway commute to Hobart CBD to suit those seeking modern affordable living within range of everyday conveniences.

A perfect blend of modern living, energy efficiency, and a prime location this townhouse is a must see!

- Land Area 312.00 square metres
- Building Area: 111.00 square metres
- Bedrooms: 3
- Bathrooms: 2
- Double carport
- Ensuite

#### CONTACT DETAILS

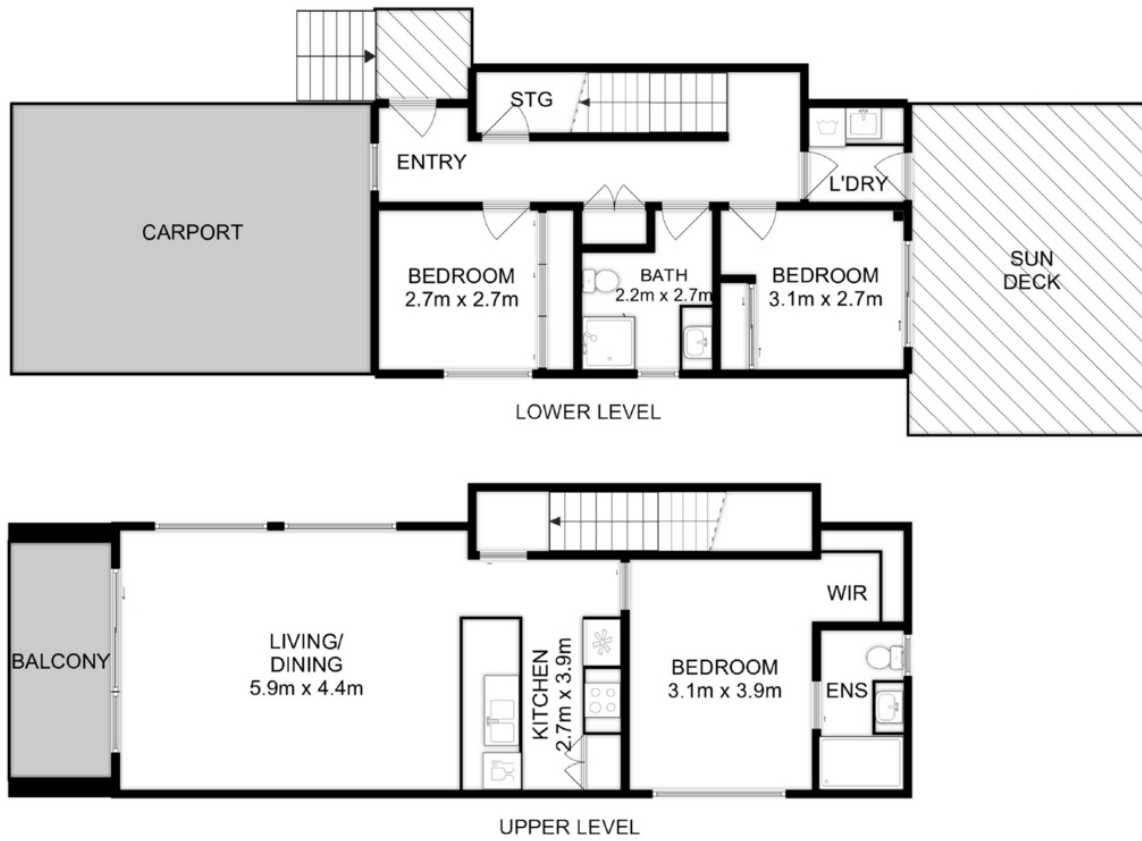
**Elders Hobart**  
5 Victoria Street  
HOBART, TAS  
03 6220 6999

**Jodi Hansson**  
0409 976 994









Total Approx. Floor Area : 108 sqm

All measurements are internal and approximate.  
This plan is a sketch for illustration, not valuation.  
Produced by Open2view.com