



15 St Canice Avenue, SANDY BAY, TAS 7005

Retirement living in St Canice Village

Positioned in the coveted St Canice Village, this Lifetime Tenancy for apartment 25 is a rarity to market. Located in the architecturally designed Garden Apartment complex of the village and coupled with the many communal amenities of the Village, this property presents the very best of independent living for retirees in an unsurpassed location.

Conveniently set across one level the contemporary, well designed apartment with

TYPE: Sold

INTERNET ID: R24485220

SALE DETAILS

Offers over \$795,000

The particulars contained herein are supplied for information only and shall not be taken as a representation in any respect on the part of the vendor or its agent. Interested parties should contact the nominated person or office for full and current details.

well-equipped galley style kitchen is open to the dining and living area.

The master suite has a wall of built in robes and ensuite bathroom, and a further double bedroom has built in robes and is serviced by a second bathroom, providing ample space for grandchildren or guests to come and stay, and the European style laundry completes the floorplan.

With one car space and storage cupboard in the basement carpark onsite, residents of St Canice also enjoy access to communal areas comprising a BBQ area, established gardens with raised vegie patches, craft room and a lounge with bar facilities. Local caf   and boutique grocer Blac Fig is just a short walk or drive away, and the beaches and shops of Lower Sandy Bay are nearby.

A truly exceptional offering for a retirement of relaxation amongst low-maintenance surrounds and like-minded neighbours; an enviable lifestyle and address awaits the next occupants of apartment 25, St Canice Village.

- Building Area: 115.00 square metres
- Bedrooms: 2
- Bathrooms: 2
- Single garage
- Ensuite

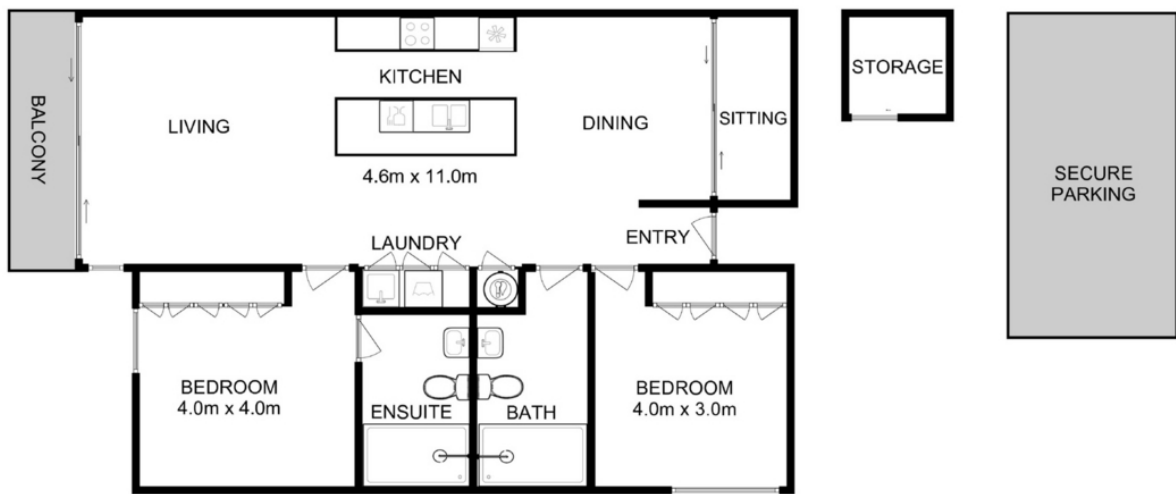
CONTACT DETAILS

Elders Hobart
5 Victoria Street
HOBART, TAS
03 6220 6999

Anne Boman
0409 571 542







Total Approx. Floor Area : 115 sqm



All measurements are internal and approximate.
This plan is a sketch for illustration, not valuation.
Produced by Open2view.com