



708 Oceana Drive, TRANMERE, TAS 7018

Stunning family home with panoramic views

Enjoying a sunny, elevated position showcasing magnificent panoramic views across the River Derwent and the city with kunanyi/Mt Wellington as a wonderful backdrop is this light-filled, meticulously maintained family residence.

Spanning two levels, the home features a flexible floor plan with four bedrooms (or three bedrooms and two living areas), two bathrooms, and a spacious covered outdoor

TYPE: Sold

INTERNET ID: R24496439

SALE DETAILS

Offers over \$1,050,000

entertaining area. A single, powered garage adds convenience and ample storage.

The upper level forms the heart of the home, featuring a spacious kitchen with granite benchtops, ample storage, and Tamarian Oak cabinetry. The open-plan dining area flows effortlessly to the generously sized living room, where a wall of windows invites abundant natural light and frames the spectacular views. Step out onto the balcony to enjoy breathtaking vistas of the river, city and mountain.

Adjacent to the kitchen is the covered outdoor entertaining area, perfect for hosting family and friends while enjoying the seamless transition between indoor and outdoor living.

The primary bedroom offers stunning views, creating a peaceful retreat, and features a walk-in wardrobe and an ensuite with a vanity, toilet, and shower.

The upper level hosts a second bedroom with built in wardrobes and overlooking the backyard and the generously proportioned family bathroom, separate toilet and separate laundry that provides access to the outside.

Thoughtful heating solutions include hydronic heating throughout the home, with underfloor heating in the kitchen area. The windows along the front of the house have been upgraded to double glazing, enhancing comfort and energy efficiency.

Downstairs, a spacious entry foyer leads to two additional bedrooms, or bedroom and second living space—both with their own spectacular views. A convenient powder room services this level, and there's access to a large under-house storage area.

The home is completed by a single garage with covered access inside and ample storage space. The beautifully maintained gardens provide a spacious grassy area for children to play, along with a selection of fruit trees, including apple and pear.

Located in the prestigious Oceana Drive, this property offers easy access to local amenities, including the Shoreline Plaza, medical services, and stunning beaches. With its enviable location and unparalleled views, this home promises a lifestyle of comfort, convenience, and natural beauty.

- Land Area 679.00 square metres
- Building Area: 198.00 square metres
- Bedrooms: 4
- Bathrooms: 2
- Car Parks: 3
- Single garage
- Ensuite
- Floorboards

CONTACT DETAILS

Elders Hobart
5 Victoria Street
HOBART, TAS
03 6220 6999

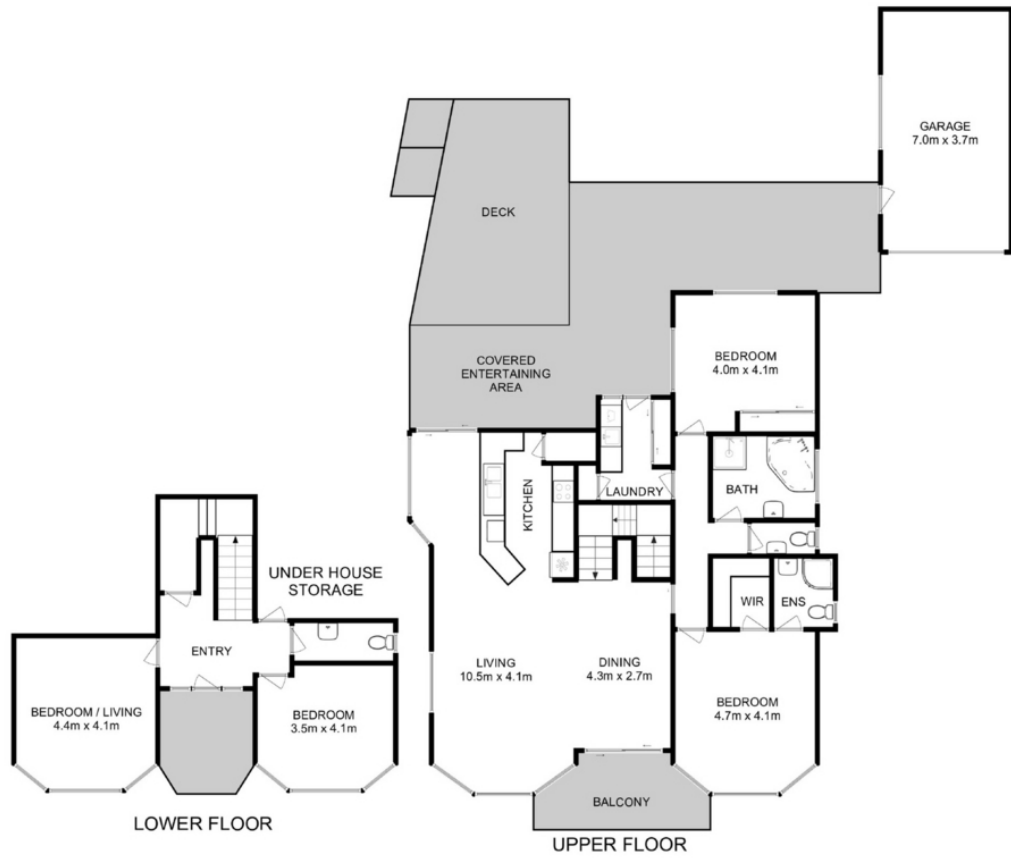
Rose Allie
0426 877 789











Total Approx. Floor Area : 198 sqm
Total Approx. Garage Area : 26 sqm

All measurements are internal and approximate.
This plan is a sketch for illustration, not valuation.
Produced by Open2view.com