



127 Elphin Road, NEWSTEAD, TAS 7250

Period meets present, space matches style

Brought beautifully up to date by a renovation that was comprehensive in its reach and outstanding in its attention to detail, this superb family home retains significant Federation era integrity while delivering exceptionally inviting modern dimensions.

A dual level format crafted and curated for flexibility is introduced by the classically elegant facade and a central hall featuring evocative fretwork, hardwood floorboards

TYPE: Sold

INTERNET ID: R24500881

SALE DETAILS

Best Offer Over
\$1,075,000

The particulars contained herein are supplied for information only and shall not be taken as a representation in any respect on the part of the vendor or its agent. Interested parties should contact the nominated person or office for full and current details.

and picture shelves beneath decorative ceilings. Living and dining areas that make enjoyment certain and entertaining ease are complemented by arresting outlooks to the hills far beyond and by the open-plan kitchen's sophistication. Ample storage, quality appliances, an integrated fridge, dish-washer and a cleverly recessed butler's pantry perform their role to perfection.

Natural light and unlimited luxury make their presence felt throughout this refined yet family friendly format where five bedrooms begin with three on the principal level, sharing an impeccably appointed bathroom.

Below, spectacular additional living and entertaining proportions served by their own kitchen facilities and a fabulous bar flow to a substantial deck accompanied by a wood fired pizza oven. Two further bedrooms and an ensuite bathroom complement the downstairs mood and complete the family focused accommodation of this exceptional address.

Ducted gas heating system, several panel heaters and wood heaters ensure the comfort level is consistent while a double garage and electric gate access into the garden backdrop from Hart Street contributes a convenient conclusion close to the Scotch Oakburn College junior campus, Launceston Preparatory School, shopping options and the CBD.

- Land Area 840.00 square metres
- Building Area: 301.00 square metres
- Bedrooms: 5
- Bathrooms: 2
- Double garage
- Floorboards

CONTACT DETAILS

REX Launceston
54 Cameron Street
LAUNCESTON, TAS
03 6333 7888

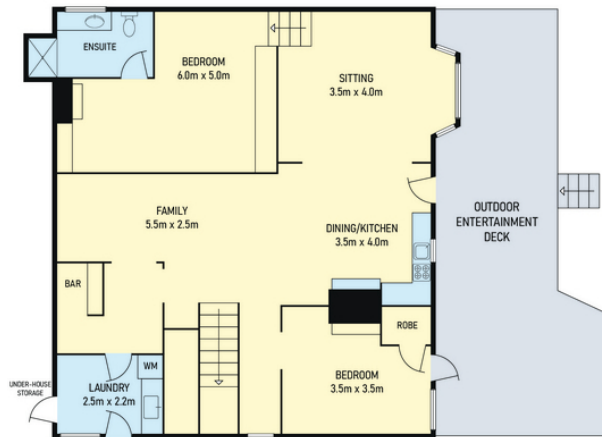
Sam Woolcock
0400813033











Disclaimer: Floor Plan measurements are approximate and are for illustrative purposes only.