



## 13 Cameron Street, SCOTTSDALE, TAS 7260

Enjoy Scottsdale in a modern way

The quality with which this bright, inviting three bedroom home was originally built and more recently updated complement its exceptional ability to meet modern day needs in style.

A spacious living area is the focal point of a beautifully designed, family friendly floor-plan that features a contemporary kitchen/dining domain where the views, the new

**TYPE:** Sold

**INTERNET ID:** R24502963

**SALE DETAILS**

**Offers Over \$585,000**

stone surfaces, bespoke splashbacks, Neff oven, Neff induction cooktop and Fisher & Paykel dual dishwasher each leave a lasting impression.

Three bedrooms including a main bedroom served by a sophisticated ensuite deliver desirable accommodation surrounding a superb family bathroom fitted with a spa bath, separate shower and designer tiles in a home that provides instant appeal and enduring enjoyment.

The presence of new floor coverings and fresh paint throughout contributes to the cool modern mood while double glazing, insulated walls and ceilings, privacy and block out blinds further emphasize the refinement of the renovation.

Ample storage, paved undercover outdoor entertaining dimensions accompanied by a four person spa, still only six months old, a double garage, carport and a workshop with its own toilet and handbasin supply yet another layer of appeal to a property that also offers established gardens, a garden shed and an enviro and economy conscious 8.8kw solar panel system by Thomas Wolf that effectively eliminates power bills.

Parking space for a motorhome or trailers seals a sensational deal in a convenient setting that puts Scottsdale's town centre, shops, services and the hospital precinct within easy walking distance.

Scottsdale is the Services Hub of the North East of Tasmania, located 62kms from Launceston and 34kms from Derby, home of the world-renowned mountain bike trails. Also located just 25kms from the beaches of Bridport and world class Barnbougle Dunes & Lost Farm golf courses.

- Land Area 675.00 square metres
- Building Area: 124.00 square metres
- Bedrooms: 3
- Bathrooms: 2
- Car Parks: 2
- Double garage
- Double carport
- Ensuite

#### CONTACT DETAILS

**REX Launceston**  
54 Cameron Street  
LAUNCESTON, TAS  
03 6333 7888

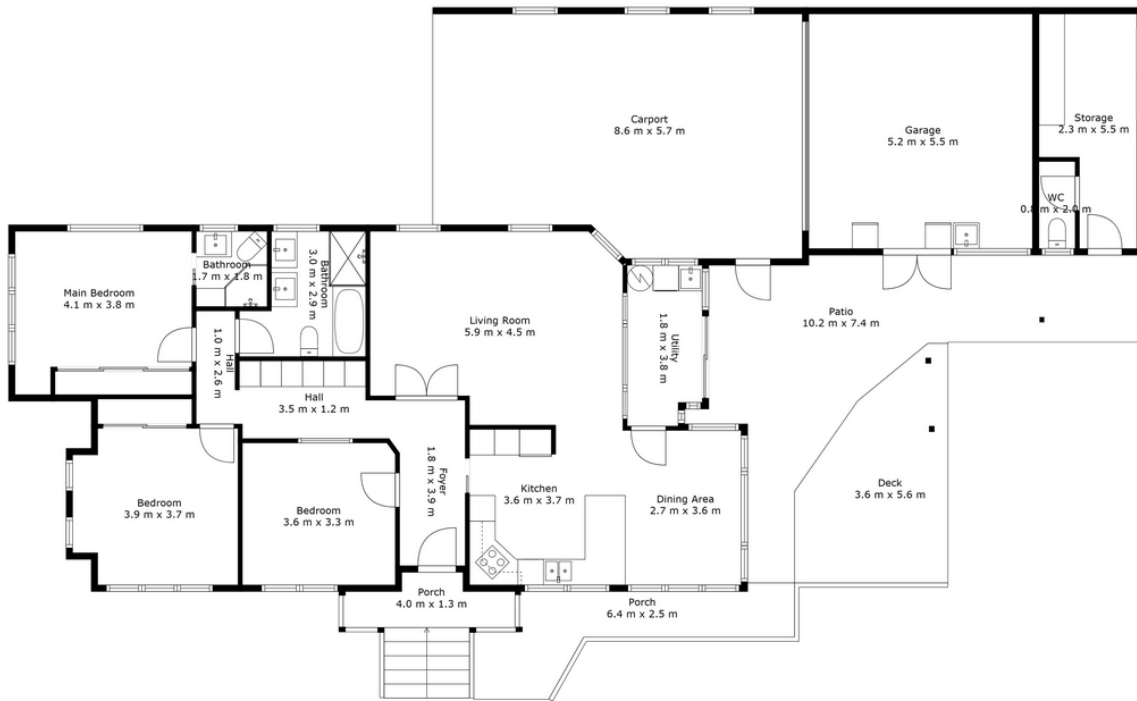
**Justin Wiggins**  
0438 522 876











13 CAMERON STREET, SCOTTSDALE



Plan is not to scale. The floor plan is intended as a guide only. All information is indicative and approximate. All information is to be verified on site. The vendor and/or listing agent and provider of this floor plan are not responsible for any errors and/or omissions.

Provided by NB Media

