



12990 Tasman Highway, SWANSEA, TAS 7190

Luxury Escape and Simple Investment

Welcome to Luna – an exceptional two-storey residence set within the prestigious Piermont Estate. Overlooking the pristine waters of Great Oyster Bay and just a short stroll to the beach, this beautifully crafted home pairs luxury living with a serene coastal backdrop. The layout offers ideal separation, with a spacious bedroom and bathroom on each level. The upper bathroom is bathed in natural light under a generous skylight, while the lower level invites relaxation with a deep, indulgent bath.

TYPE: For Sale

INTERNET ID: R24504933

SALE DETAILS

Offers Over \$1,190,000

The particulars contained herein are supplied for information only and shall not be taken as a representation in any respect on the part of the vendor or its agent. Interested parties should contact the nominated person or office for full and current details.

The open-plan living and dining area is warm and inviting, complete with a fireplace for cosy evenings. Expansive sliding doors on both floors draw in natural light and open to the outdoors, making the most of the views and fresh coastal air. Upstairs, a stunning deck provides the perfect vantage point to unwind and take in the beauty of the bay. Piermont Estate offers an unrivalled escapeâ##private beaches, tranquil surrounds and acclaimed fine diningâ##yet is only five minutes from the heart of Swansea.

Currently operated under the Piermont management agreement, the property provides both a luxurious personal retreat and an easy investment opportunity.

Built to the highest standards and showcasing superior craftsmanship throughout, Luna 3 stands as a rare offering within this exclusive coastal enclave. Figures and estate information are available on request.

- Land Area 358.00 square metres
- Building Area: 119.00 square metres
- Bedrooms: 2
- Bathrooms: 2

CONTACT DETAILS

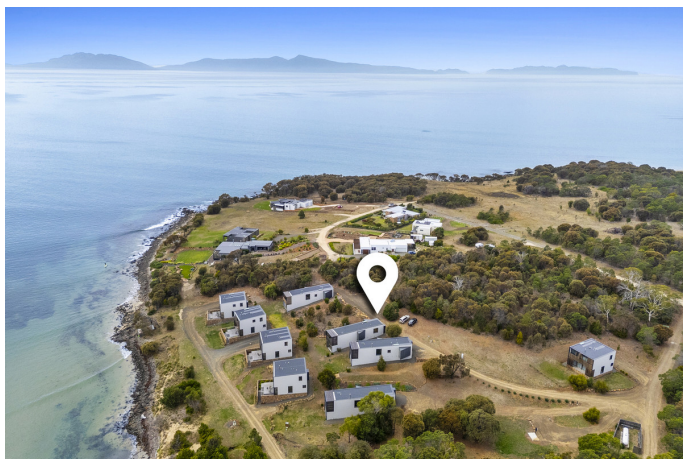
Elders Hobart
5 Victoria Street
HOBART, TAS
03 6220 6999

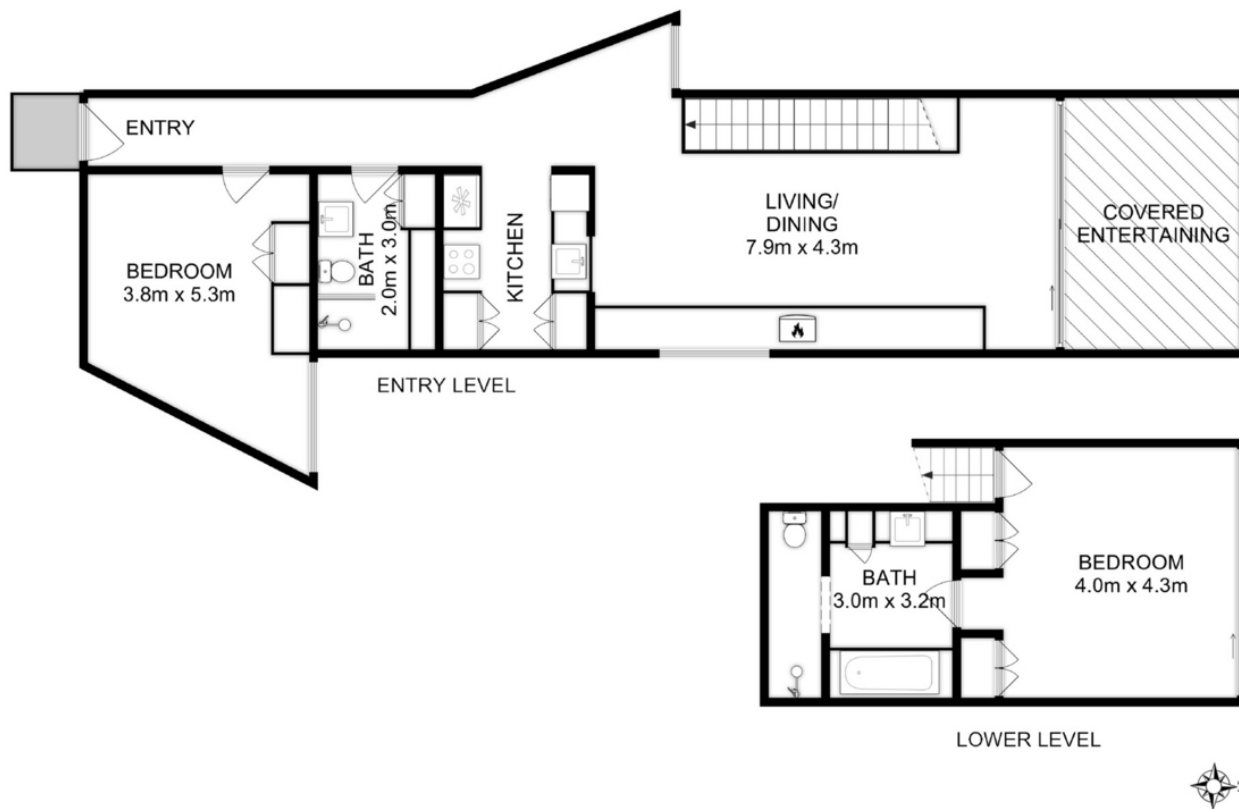
Kiri Jones
0400 221 818











Total Approx. Floor Area : 119 sqm

All measurements are internal and approximate.
This plan is a sketch for illustration, not valuation.
Produced by Open2view.com