



## 13 Flowerpot Crescent, BLACKMANS BAY, TAS 7052

Gorgeous family home with show-stopping views to match

A short stroll from Blackmans Bay Beach will take you to this stunning family home perfectly positioned within a peaceful and private enclave. The prized northerly aspect bathes the interior in bright natural light while the amazing beach and mountain views are sure to leave you in awe.

The open-plan kitchen and dining space flows freely to the outdoors where a large

**TYPE:** Sold

**INTERNET ID:** R24514250

**SALE DETAILS**

**Offers over \$895,000**

entertainer's deck provides the ideal place to host guests. Gorgeous timber finishes bring a sense of warmth to the generous layout including in the versatile living room which also connects effortlessly to the outdoors.

For the chef, a new oven and microwave await in the kitchen with ample bench and storage space plus there's a breakfast bar for casual meals.

This main level's living space could easily work as a third bedroom alongside a dedicated bedroom and bathroom for total convenience. The upper level is accessed via a striking spiral staircase and reveals an expansive 5.8x6.8m living zone with a stunning vaulted ceiling, timber floors, an attached balcony and a lovely elevated outlook.

Your main bedroom also resides on the upper level with double entry doors, dual built-in robes and an ensuite. This well-appointed owner's haven will feel more like your very own serene retreat far removed from the hustle and bustle of everyday life.

Gas heating, a functional main-level laundry and an abundance of storage are all yours and there's even an 11x7.2m lower-floor garage/workshop with potential for development (STCA), depending on your family's needs. Blackmans Bay shops, restaurants and services are only minutes from your new home and you'll also be so close to Illawarra Primary School for those with younger children. Renowned beaches, pretty parks and major retailers are minutes away and you're just 20 minutes (approx.) from the Hobart CBD.

- Land Area 557.00 square metres
- Building Area: 238.00 square metres
- Bedrooms: 2
- Bathrooms: 2
- Car Parks: 2
- Double garage

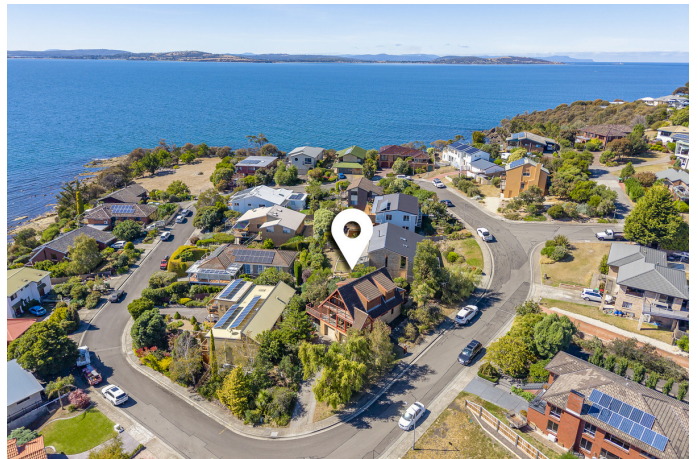
#### CONTACT DETAILS

**Elders Hobart**  
5 Victoria Street  
HOBART, TAS  
03 6220 6999

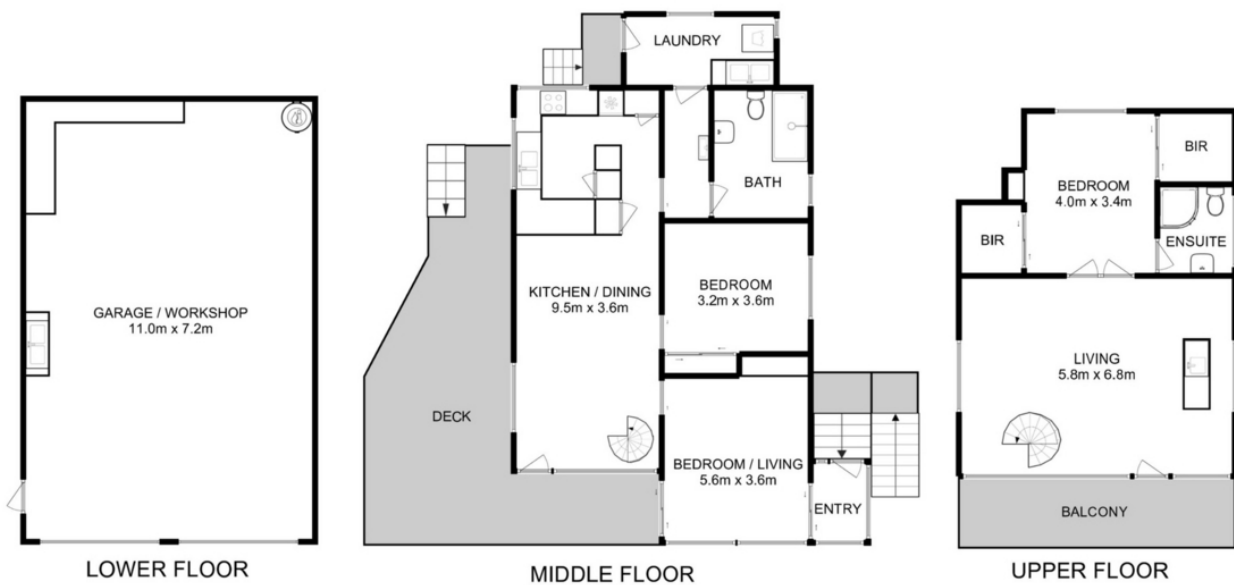
**Todd Stevenson**  
0438 295 604











Total Approx. Floor Area : 238 sqm

All measurements are internal and approximate.  
This plan is a sketch for illustration, not valuation.  
Produced by Open2view.com

