



43 Fisher Avenue, SANDY BAY, TAS 7005

1960s classic with water views

Privately positioned back from the street on a generous allotment of 1009 sqm in one of Sandy Bay's most exclusive streets, this classic circa 1960 home is light-filled, warm and inviting. Surrounded by verdant grounds and overlooking the River Derwent to enjoy water views, this property offers easy care living in an enviable location.

Conveniently set across one level, spacious open plan living with a sunny northerly

TYPE: Sold

INTERNET ID: R24546352

SALE DETAILS

Offers over \$1,100,000

The particulars contained herein are supplied for information only and shall not be taken as a representation in any respect on the part of the vendor or its agent. Interested parties should contact the nominated person or office for full and current details.

aspect forms the heart of the home. Comprising a generous living room, dining room, contemporary kitchen with casual dining, there is plenty of space to host family and friends. Extensive glazing in this part of the home captures picturesque water and garden views.

Two of the three bedrooms feature water views and built-in wardrobes, while the third includes built-in shelving, all are serviced by the central family bathroom and separate WC. The laundry completes the floorplan. A combination of reverse cycle air conditioning and a panel heater ensures year-round comfort.

Outside the home is surrounded by established gardens that are well fenced with an electric gate and feature a timber deck and courtyard. A carport provides undercover parking.

Within easy reach of excellent schools, UTAS, the beaches of Sandy Bay, shops, cafes and amenities of Lower Sandy Bay Village and public transport, this is an exceptional opportunity to buy into this coveted area.

- Land Area 1,009.00 square metre
- Building Area: 129.00 square metres
- Bedrooms: 3
- Bathrooms: 1
- Car Parks: 1
- Single carport

CONTACT DETAILS

Elders Hobart
5 Victoria Street
HOBART, TAS
03 6220 6999

Abi Freeman
0438 291 301

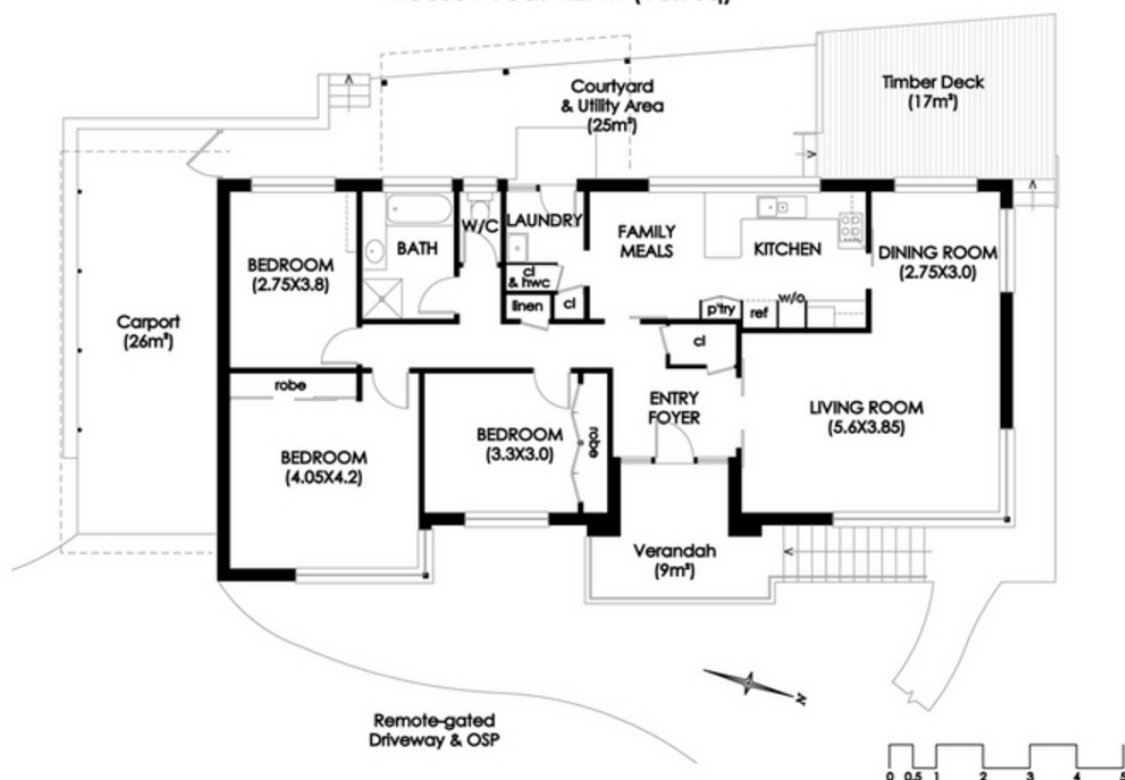








SANDY BAY
43 Fisher Avenue
House Area: 129m²(13.9sq)



IMPORTANT: measurements are approximate-interested parties need to verify