



## 183 Bathurst Street, HOBART, TAS 7000

'Wymer' Impressive residence in the heart of Hobart

Circa 1890, 'Wymer' has beautiful original features complemented by contemporary updates and an enviable vibrant city location. A generously proportioned home set across two levels with a flexible floorplan, city views and a private courtyard garden further add to the appeal of this charming property.

The entry level is dedicated to living, with the living room and dining room adjacent to

**TYPE:** Sold

**INTERNET ID:** R24561630

**SALE DETAILS**

**Offers over \$1,390,000**

the wide entry hall, and the spacious and well-appointed kitchen at the rear. A powder room, utility area and laundry with WC completes the floorplan on this level.

The impressive original staircase to the upper level reveals the primary suite with a picturesque outlook across the city, ensuite and walk-in wardrobe. Two further bedrooms are serviced by the central bathroom, and a study adds further flexible living space.

High ceilings, hardwood floors, stained glass accents, ornate plaster work, original fireplaces with surrounds, and timber accents remain in situ throughout. A combination of panel heating, gas heating and a wood fire ensures year-round comfort, and there is off street garage parking for one vehicle.

With a number of new eateries and restaurants popping up in this part of town over the past six months and Hobart's CBD, Salamanca and the waterfront just a short stroll away, this home offers vibrant city fringe living close to all amenities.

- Land Area 222.00 square metres
- Building Area: 191.00 square metres
- Bedrooms: 4
- Bathrooms: 2
- Single garage
- Ensuite

#### CONTACT DETAILS

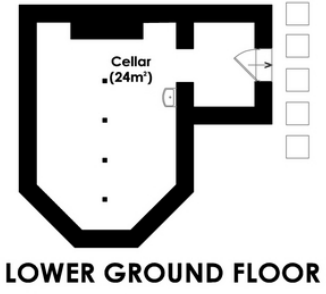
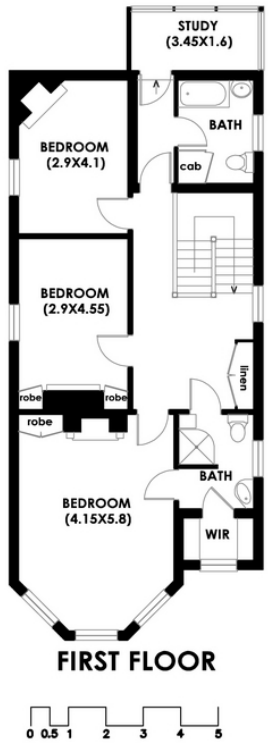
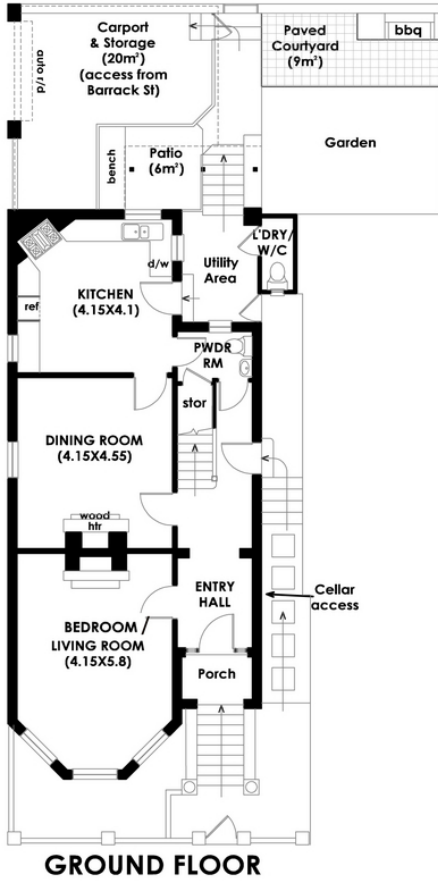
**Elders Hobart**  
5 Victoria Street  
HOBART, TAS  
03 6220 6999

**Abi Freeman**  
0438 291 301









**HOBART**  
**183 Bathurst Street**  
**House Area: 191m<sup>2</sup> (20.6sq)**  
**"WYMER"**



**IMPORTANT:** measurements are approximate-interested parties need to verify