



## 27 Chuter Street, DEEP BAY, TAS 7112

Private bayfront oasis with jetty access, market garden & entertainer's paradise

Tucked behind electric gates on just over 2,000sqm of beautifully landscaped grounds, this exceptional family home offers a rare opportunity in the peaceful Channel region. Designed with lifestyle in mind, it delivers complete privacy, tranquillity, and effortless living â## all just 10 minutes from Cygnet and a scenic 40-minute drive to Hobart's CBD.

**TYPE:** Sold

**INTERNET ID:** R24566102

**SALE DETAILS**

The home itself is spacious and thoughtfully designed, featuring four well-appointed bedrooms with built-in robes. The master suite includes its own ensuite, while the luxurious main bathroom boasts a deep spa bath â## perfect for winding down after a busy day.

At the heart of the home lies the expansive kitchen â## a dream for entertainers and home chefs alike. Complete with a 900mm gas oven, walk-in pantry, ample cabinetry, and a large island bench, it flows seamlessly into the openplan living and outdoor entertaining areas. From the wide veranda overlooking the bay to the wood-fired pizza oven, sheltered BBQ zones, and gazebo with water views, this property is built for year-round alfresco living.

A short stroll across the lawn and crown reserve leads you to your very own private, certified jetty with power, slipway access, and a registered mooring for vessels up to 12 metres â## an ideal setup for boating enthusiasts or potential lease income.

Sustainability is front and centre with an extensive market garden featuring three hot houses, raised veggie beds, and a fully netted fruit orchard â## bringing fresh, homegrown produce right to your doorstep.

Practicality meets lifestyle with generous storage and utility features: a double garage, high-clearance carport (perfect for a boat or caravan), under-house workshop and storage, garden shed, and woodshed. Water security and fire safety have also been thoroughly considered, with over 80,000 litres of water storage, a roof sprinkler-connected tank, and a dedicated firefighting pump and hose system.

Offered on a walk-in walk-out basis, this property is ready for immediate enjoyment â## whether as a unique, bayside lifestyle retreat or a premium Airbnb getaway. Furnishings can also be negotiated separately.

Blending coastal seclusion, garden-to-table living, and luxurious entertaining features, this is a lifestyle property unlike any other â## available exclusively via private inspection. Don't miss your chance to secure your own piece of paradise on the water's edge.

- Land Area 2,079.00 square metres
- Building Area: 178.00 square metres
- Bedrooms: 4
- Bathrooms: 2
- Car Parks: 4
- Double carport

Offers over \$1,650,000

#### CONTACT DETAILS

**Elders Hobart**  
5 Victoria Street  
HOBART, TAS  
03 6220 6999

**Renee Vanson**  
0417 535 112



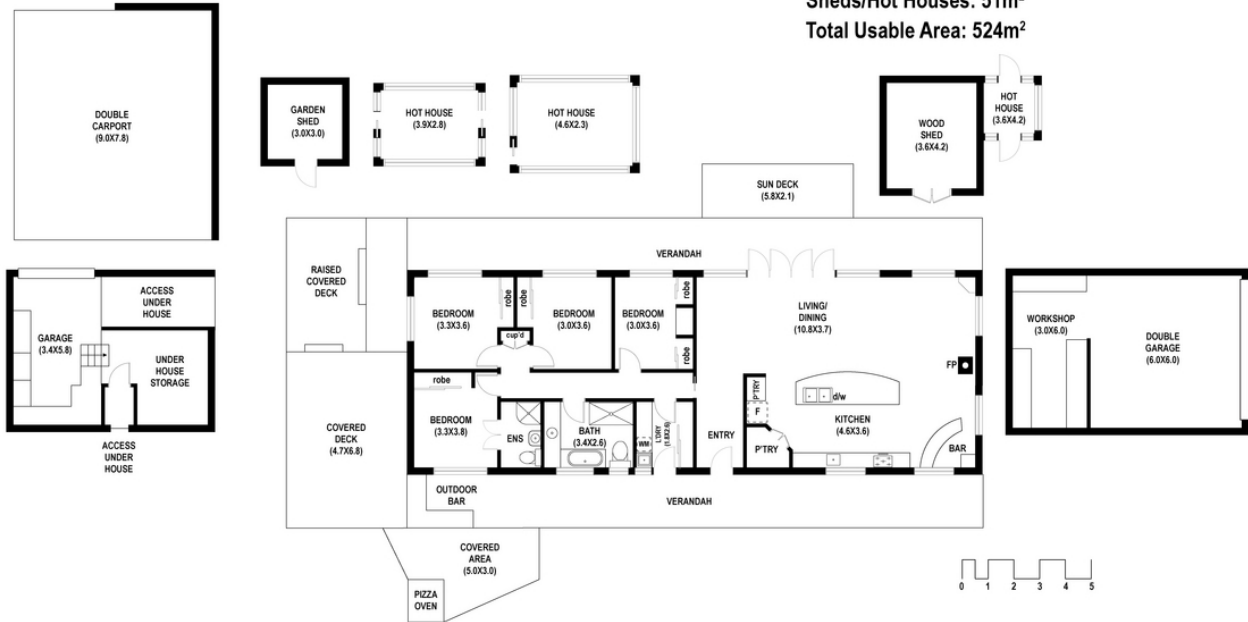






**DEEP BAY**  
**27 Chuter Street**  
**House Area: 173m<sup>2</sup> (18.6sq)**

**House Area: 173m<sup>2</sup>**  
**Verandah: 106m<sup>2</sup>**  
**Covered Deck: 50m<sup>2</sup>**  
**Garage: 20m<sup>2</sup>**  
**Double Carport: 70m<sup>2</sup>**  
**Sheds/Hot Houses: 51m<sup>2</sup>**  
**Total Usable Area: 524m<sup>2</sup>**



**IMPORTANT:** measurements are approximate-interested parties need to verify  
 Real Estate Marketing by nextcreative.com.au