



## 18 Red Chapel Avenue, SANDY BAY, TAS 7005

Substantial family residence with pool and panoramic water views

Privately nestled at the end of a tree-lined driveway and set back from the street on a generous 994sqm allotment, this impressive circa 1948 residence effortlessly combines timeless character with modern comforts. With sweeping views of the River Derwent and a flexible floorplan designed for family living, this substantial home is in one of Sandy Bay's most sought-after pockets.

**TYPE:** Sold

**INTERNET ID:** R24566915

**SALE DETAILS**

**Offers over \$1,790,000**



Offering an expansive 301sqm of living space across two light-filled levels, the home welcomes you with a wide entry foyer and a warm, inviting interior rich in original charm. Timber floorboards, high ceilings, and elegant architectural details are complemented by contemporary updates that enhance everyday comfort and functionality.

On the entry level, a spacious living room flows into a well-appointed kitchen, while a formal living room and dining room enjoy views overlooking the river. Two generous bedrooms, a central family bathroom, and a powder room complete this floor.

Downstairs, a large family room opens through French doors to a private north-facing courtyard and pool deck, an ideal setting for alfresco entertaining or summer relaxation. This level also houses two more bedrooms, a second bathroom, laundry amenities, and access to the rear garden and lawn area.

Perfectly suited to growing families or those seeking flexible work from home options, all bedrooms are equipped with built-in wardrobes, and the home's spacious design allows for both communal living and private retreat.

Year-round comfort is assured with a combination of reverse cycle air conditioning, wood heating, and a classic open fireplace. Outside, the established gardens offer tranquil surrounds, with space for children and pets to play.

Within easy reach of excellent schools, premium local grocers and cafes, public transport, and nearby beaches, the home is well positioned in one of Sandy Bay's most coveted streets. This is an exceptional opportunity to buy a substantial holding in this fantastic location.

- Land Area 994.00 square metres
- Building Area: 301.00 square metres
- Bedrooms: 4
- Bathrooms: 2
- Car Parks: 3

#### CONTACT DETAILS

**Elders Hobart**  
5 Victoria Street  
HOBART, TAS  
03 6220 6999

**Abi Freeman**  
0438 291 301









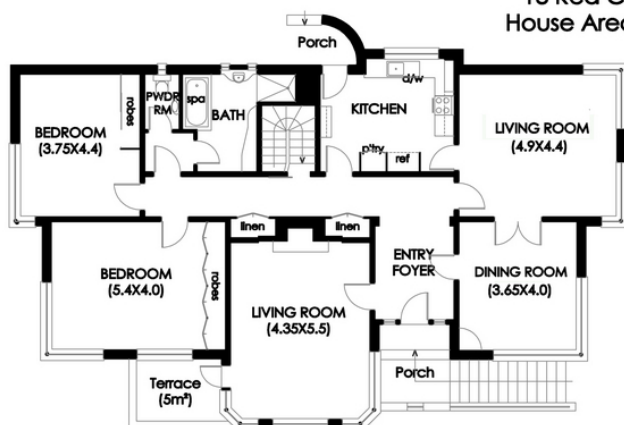




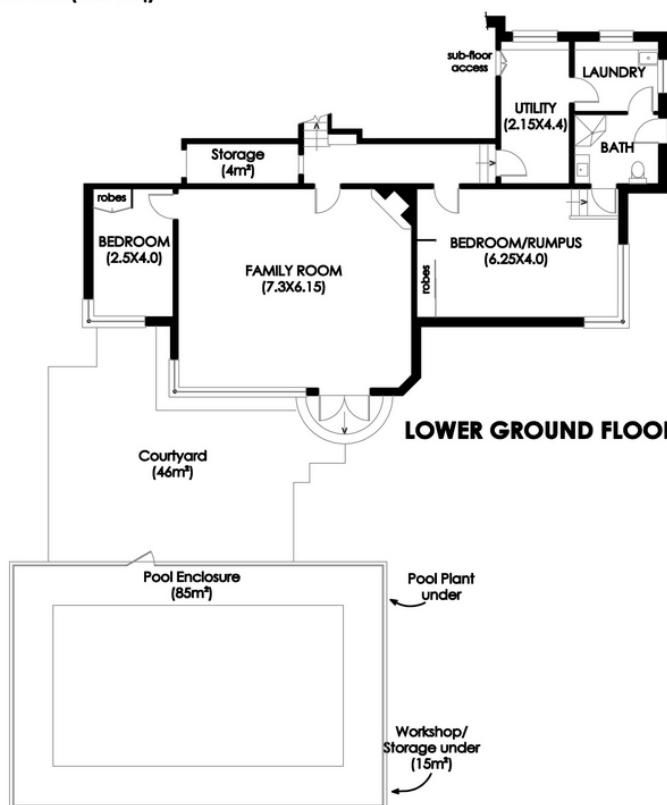




**SANDY BAY**  
**18 Red Chapel Avenue**  
**House Area: 301m<sup>2</sup>(32.4sq)**



**GROUND FLOOR**



**LOWER GROUND FLOOR**



**IMPORTANT: measurements are approximate-Interested parties need to verify**