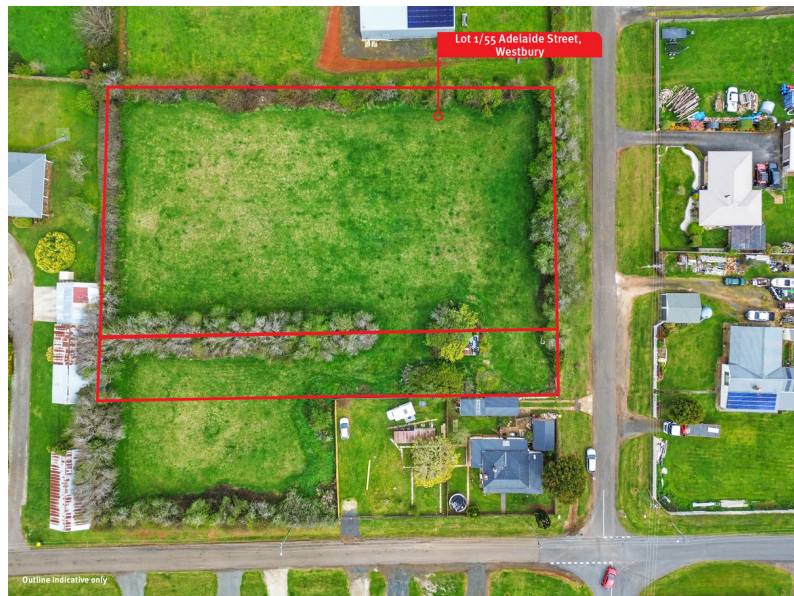




Outline indicative only



Outline indicative only



Outline indicative only

55 Adelaide Street, WESTBURY, TAS 7303

A Perfect Lifestyle Opportunity!

The particulars contained herein are supplied for information only and shall not be taken as a representation in any respect on the part of the vendor or its agent. Interested parties should contact the nominated person or office for full and current details.

1,012.00 square metres,

Being offered to the market is this lovely life style block looking out over the mountains set on over an acre with trees lining the perimeter. Lot 1 is relatively flat but with a slight gradient ensuring good drainage. Lot 2 has a Taswater connection and gate to enter into.

An increasingly popular area offering a country lifestyle and within commuting distance to Devonport and/or Launceston. A short walk to Westbury Primary School, Westbury Village Green and a short drive to Westbury IGA.

Lot 1:

- Low Density Residential Zoning
- 4180m2 allotment

Lot 2:

- General Residential Zoning
- 1057m2 allotment
- Taswater Connection

Total land size: 5237m2

Elders Real Estate have obtained all information in the document from sources we believe to be reliable; however, we cannot guarantee its accuracy. Prospective purchasers are advised to carry out their own investigations.

* Boundary outlines on images are approximate and indicative only.

- Land Area 1,012.00 square metre

TYPE: Sold

INTERNET ID: R24569340

SALE DETAILS

Offers Over \$349,000

CONTACT DETAILS

REX Launceston
54 Cameron Street
LAUNCESTON, TAS
03 6333 7888

Sam Woolcock
0400813033



