



## 39 Pirie Street, NEW TOWN, TAS 7008

Timeless character meets contemporary excellence

A contemporary renovation has seamlessly melded modern comfort and convenience with classic original features in this solidly built circa 1920 home, to offer an enviable lifestyle in an ideal location. Thoughtfully designed and completed in 2020, the generous floorplan spans over two levels, offering five bedrooms and multiple living spaces. The contemporary extension is light-filled and spacious, framed by double-glazed windows and finished with quality fixtures and fittings throughout.

**TYPE:** Sold

**INTERNET ID:** R24591524

**SALE DETAILS**

**Offers over \$1,750,000**

Open plan living comprising spacious family room, dining, and well-equipped kitchen with quality ilve appliances, mains gas cooking, long island bench for casual dining, and abundant preparation and storge space forms the heart of the home. Large glass sliding doors open onto the private courtyard, creating seamless indoor/outdoor living, perfect for entertaining family and friends.

A separate formal lounge offers a peaceful retreat, complemented by the warmth of a wood heater and the ambience of the home's original character, creating an ideal space for quiet evenings.

On the upper level, the private primary suite enjoys a walk-in wardrobe and stylish ensuite bathroom with floor heating. Four additional bedrooms are positioned on the ground floor, three with built-in wardrobes, and are serviced by a tastefully renovated bathroom complete with a luxurious free-standing tub and separate shower.

Throughout the original home, elegant period details remain in place, including high ceilings, hardwood floors, timber accents, picture rails and stained glass windows.

A standout feature of the property is the versatile studio space with separate access, which is currently operating as a successful hairdressing salon. This area is ideal for those seeking a professional workspace, guest accommodation, or creative studio. Secure garage parking, additional off-street parking, a chook house, garden shed, and low-maintenance outdoor spaces adds amenity.

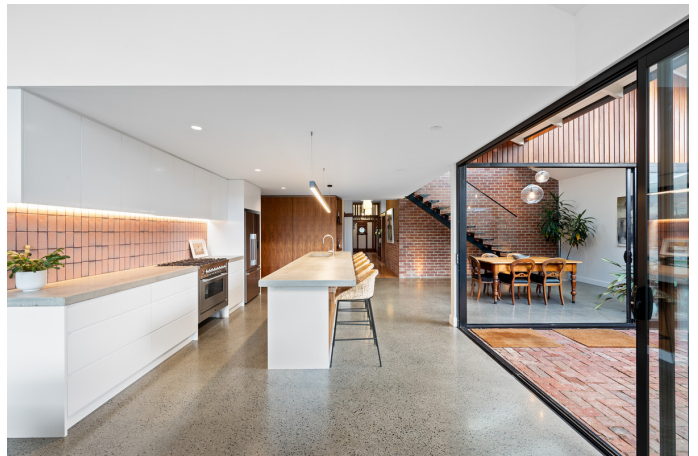
Desirably located within easy reach of excellent schools, Hill Street Grocer, New Town Plaza, Hobart's CBD, parks, and public transport, this impressive residence offers a rare blend of heritage charm, contemporary flair, and everyday functionality in a tightly held and sought after pocket of New Town.

- Land Area 666.00 square metres
- Building Area: 262.00 square metres
- Bedrooms: 5
- Bathrooms: 2
- Car Parks: 2
- Single garage
- Ensuite

#### CONTACT DETAILS

**Elders Hobart**  
5 Victoria Street  
HOBART, TAS  
03 6220 6999

**Abi Freeman**  
0438 291 301

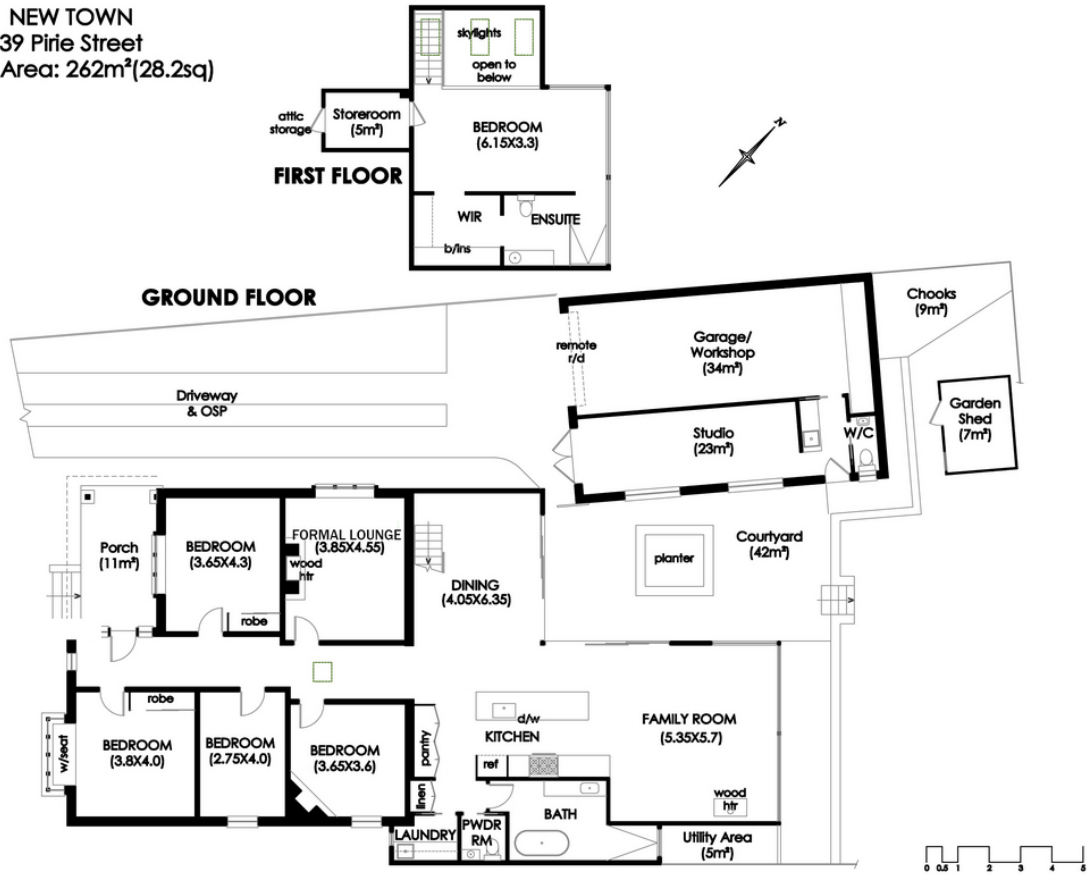








NEW TOWN  
39 Pirie Street  
House Area: 262m<sup>2</sup>(28.2sq)



IMPORTANT: measurements are approximate-interested parties need to verify