



11 Flamenco Circle, GLENORCHY, TAS 7010

Contemporary comfort in a prime location

Nestled within the desirable Flamenco complex, this two-bedroom, one-bathroom townhouse is a seamless blend of contemporary design and effortless living. Perfectly positioned, it offers an ideal combination of modern comforts and a low-maintenance lifestyle.

Step inside to discover an open-plan layout that exudes both style and practicality. The

TYPE: Sold

INTERNET ID: R24603163

SALE DETAILS

Offers over \$495,000

The particulars contained herein are supplied for information only and shall not be taken as a representation in any respect on the part of the vendor or its agent. Interested parties should contact the nominated person or office for full and current details.

sleek kitchen is fitted with high-end Smeg appliances, promising both elegance and functionality for your culinary needs. A Daikin split system ensures year-round comfort, while NBN connectivity supports a modern, connected lifestyle.

Each of the two bedrooms are thoughtfully designed with built-in wardrobes, providing ample storage solutions. The home features a European laundry and linen storage.

The light-filled living area flows effortlessly to private, both front and back yardsâ##perfect for unwinding or hosting intimate gatherings. The property also boasts a single remote garage with internal access, ensuring security and ease.

The surrounding low-maintenance grounds mean you can spend less time on chores and more time enjoying life. Conveniently located just minutes from Northgate Shopping Centre, public transport options, and local schools, this home presents an unparalleled opportunity for stylish, carefree living.

Experience the essence of sleek and contemporary comfort. Your next chapter starts here.

- Land Area 254.00 square metres
- Building Area: 98.00 square metres
- Bedrooms: 2
- Bathrooms: 1
- Car Parks: 1
- Single garage

CONTACT DETAILS

Elders Hobart
5 Victoria Street
HOBART, TAS
03 6220 6999

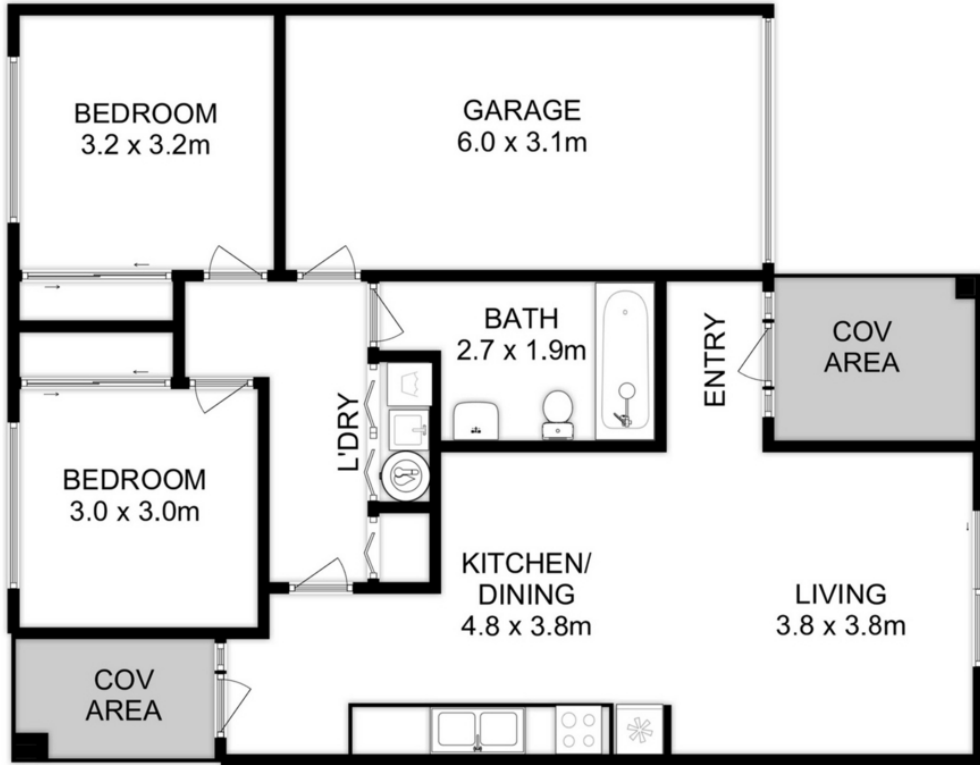
Rorie M Auld
0413 887 009











Total Approx. Floor Area : 98 sqm

All measurements are internal and approximate.
This plan is a sketch for illustration, not valuation.
Produced by Open²view.com