

617 Nugent Road, WATTLE HILL, TAS 7172

History in the making – circa 1920

Just five minutes from the heart of Sorell, this charming small rural holding is on the market for the very first time—offering a rare opportunity to own a slice of history. Once serving as the local post office, the property has been cherished by the same family for generations and now awaits its next chapter.

TYPE: Sold

INTERNET ID: R24621573

SALE DETAILS

The existing residence, while in need of significant renovation, holds character and potential for those inspired to restore it to its former glory. Alternatively, it provides a perfect canvas to reside in while you build a brand-new (STCA) home tailored to your vision.

Set on just under 5 acres of picturesque land, the property lends itself beautifully to a market garden, hobby farm, or simply a peaceful rural lifestyle amid the serene surroundings of Wattle Hill.

Thoughtfully priced to reflect its potential, this unique opportunity is expected to attract strong interest—so don't delay. Inspections are available by appointment only. Get in touch to register your interest in this historic gem.

- Land Area 2.02 hectares
- Building Area: 92.00 square metres
- Bedrooms: 2
- Bathrooms: 1
- Car Parks: 1

Offers over \$495,000

CONTACT DETAILS

Elders Hobart
5 Victoria Street
HOBART, TAS
03 6220 6999

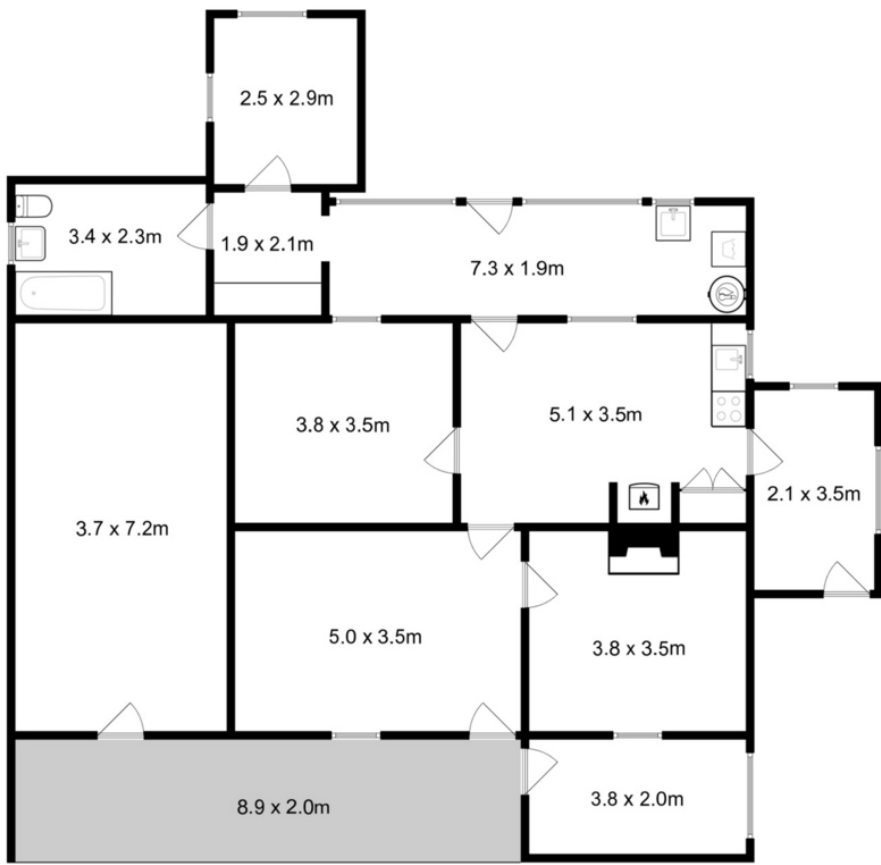
Renee Vanson
0417 535 112











Total Approx. Floor Area : 153 sqm

All measurements are internal and approximate.
This plan is a sketch for illustration, not valuation.
Produced by Open2view.com