



33 Feltham Street, NORTH HOBART, TAS 7000

Feltham Cottage, conveniently charming

Perfectly blending historic charm with modern comfort, this beautifully renovated one-bedroom Edwardian cottage offers an inviting and convenient lifestyle in the heart of North Hobart. Originally built in 1900, the home thoughtfully combines classic period details with contemporary finishes to create a warm and stylish living space. The single-level design features a spacious bedroom, a bathroom with walk in shower, a fully equipped modern kitchen and a separate laundry.

TYPE: Sold

INTERNET ID: R24623808

SALE DETAILS

Offers over \$735,000

Providing comfort and accessibility with no stairs, this gorgeous cottage also includes an abundance of built in storage. Adding to its appeal is an element of surprise - a cleverly transformed attic space. Now an additional storage space or potentially a home office, it offers flexibility for work or personal use. Outside, a vibrant courtyard garden with shed is a private, colourful retreat, perfect for relaxing or entertaining. The property also includes off-street parking, a rare and valuable feature in this sought-after location.

Situated just a five-minute walk from the lively North Hobart café strip and the iconic State Cinema, this cottage offers unbeatable access to some of Hobart's best dining, entertainment, and cultural experiences. Its central location makes it an ideal base for exploring the city's top attractions, including the Royal Tasmanian Botanical Gardens, MONA, Salamanca Market, and the scenic trails of kunanyi/Mt Wellington.

Whether you're searching for a charming home, a city escape, or a savvy investment, this delightful cottage offers a rare opportunity to enjoy comfort, character, and convenience in one of Hobart's most vibrant neighbourhoods.

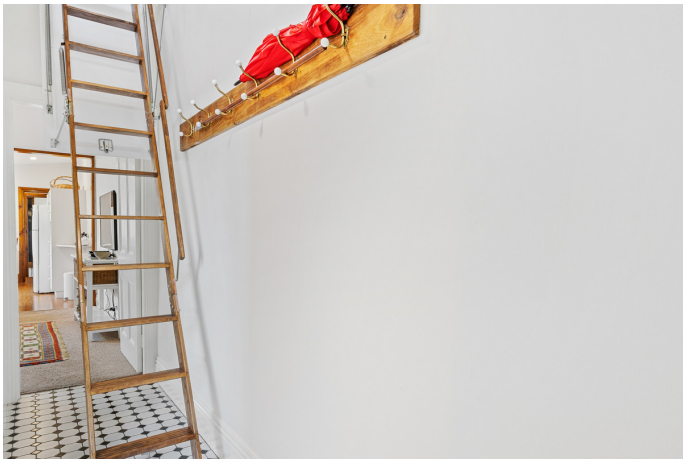
- Land Area 131.00 square metres
- Building Area: 90.00 square metres
- Bedrooms: 1
- Bathrooms: 1
- Car Parks: 1

CONTACT DETAILS

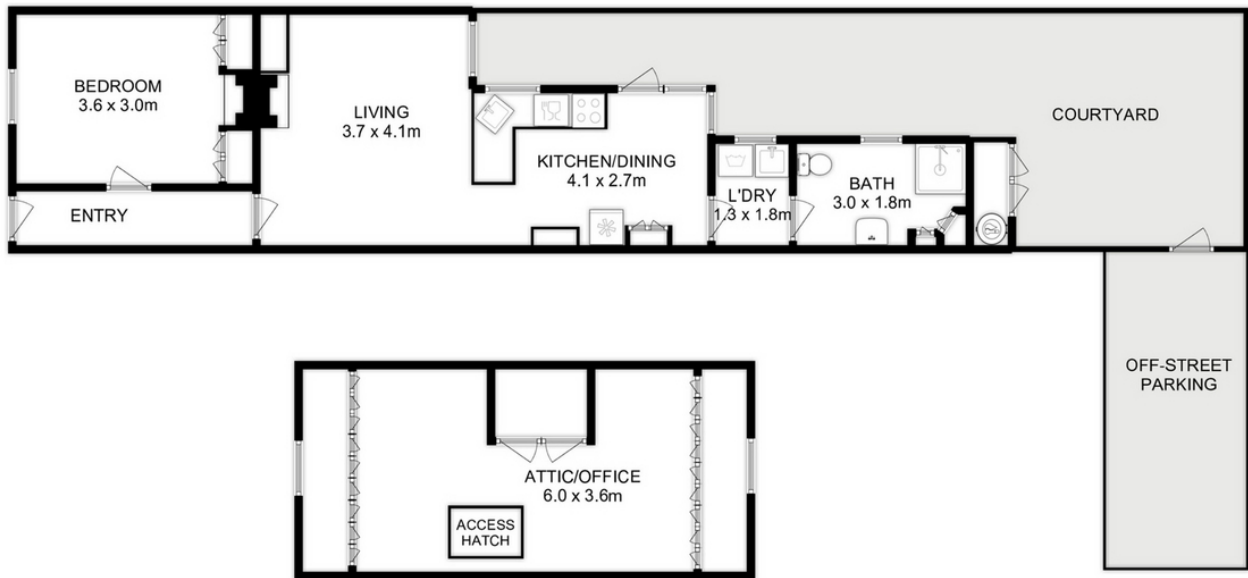
Elders Hobart
5 Victoria Street
HOBART, TAS
03 6220 6999

Warren Lashmar
0427 788 205









Total Approx. Floor Area : 90 sqm
Total Approx. Outbuilding Area : 1..0 sqm



All measurements are internal and approximate.
This plan is a sketch for illustration, not valuation.
Produced by Open²view.com