



## 2 Barilla Court, MIDWAY POINT, TAS 7171

Relaxed family living with water views

Occupying a sunny and level block, this immaculately maintained residence enjoys water and mountain views, offering a lifestyle of ease and comfort in a highly convenient location. Thoughtfully designed for low-maintenance living, the home is ready to move into and enjoy.

The generous open-plan living area forms the heart of the home, incorporating a

**TYPE:** Sold

**INTERNET ID:** R24636065

**SALE DETAILS**

**Offers over \$675,000**

black-and-white kitchen with ample bench space, abundant storage, and a well-proportioned pantry. The adjoining dining and lounge zones are light-filled and inviting, with sliding glass doors seamlessly extending the living to a timber deckâ##an ideal space for entertaining family and friends or relaxing at the end of the day while soaking in the ever-changing water vistas.

Accommodation comprises three well-proportioned bedrooms, with the primary suite offering built-in wardrobes and a private ensuite. The second bedroom is also complete with built-ins, while the third provides flexibility as a guest room, home office, or children's playroom to suit your lifestyle. A spacious family bathroom and generous laundry/utility room enhance the home's functionality, while internal access to the single garage with remote door adds further convenience.

Year-round comfort is assured with reverse-cycle heating and cooling, while neutral interiors, highlighted by grey carpets and polished tiles, create a calming ambience that provides the perfect canvas for personal style.

Externally, the property continues to impress with a fully fenced yard, providing a safe haven for children and pets. A fire pit and raised vegetable gardens and fruit trees add charm and practicality, while the primary landscaping is complete, leaving scope to further enhance the outdoor space with gardens, or personal touches.

Positioned just minutes from shops and services, and only a short drive to the township of Sorell, this beautifully presented home offers a relaxed lifestyle in an enviable settingâ##where comfort, convenience, and views combine in perfect harmony.

- Land Area 612.00 square metres
- Building Area: 141.00 square metres
- Bedrooms: 3
- Bathrooms: 2
- Car Parks: 1
- Single garage
- Ensuite

#### CONTACT DETAILS

**Elders Hobart**  
5 Victoria Street  
HOBART, TAS  
03 6220 6999

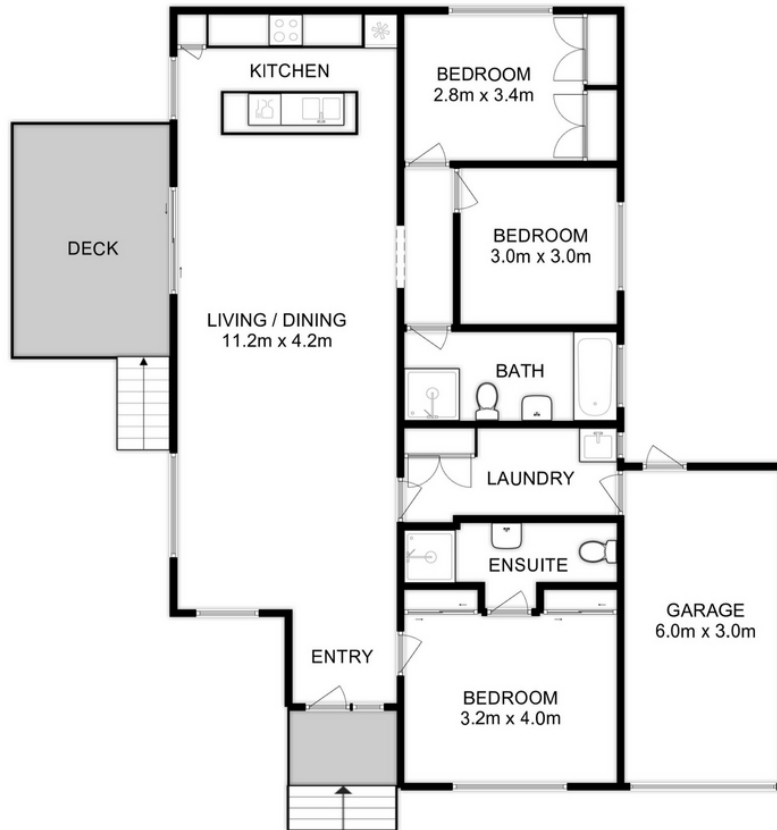
**Rose Allie**  
0426 877 789











Total Approx. Floor Area : 141 sqm

All measurements are internal and approximate.  
This plan is a sketch for illustration, not valuation.  
Produced by Open2view.com