

57 Rosehill Crescent, LENA VALLEY, TAS 7008

Family living in Lenah Valley

Positioned in one of Lenah Valley's most desirable streets, this gorgeous home offers the perfect blend of space, flexibility, and modern comfort—ideal for families seeking a peaceful lifestyle close to the city.

Set across two levels, this solid and well-maintained home features a beautifully renovated kitchen, three bedrooms, and a cleverly designed three-way bathroom

TYPE: Sold

INTERNET ID: R24660023

SALE DETAILS

Offers over \$850,000

upstairs. Downstairs provides exceptional versatility with three separate living areas and a study or potential fourth bedroom—perfect for families, guests, or working from home. The home sits proudly behind established gardens, offering great street appeal and a welcoming outdoor setting.

With multiple living zones, quality updates, and a quiet, well-established neighbourhood, this is a fantastic opportunity to secure a spacious home just minutes from schools, shops, and Hobart's CBD.

- Newly renovated kitchen
- Multiple living and study spaces
- Established gardens and street appeal
- Family-friendly layout over two levels

With its generous floorplan, flexible living options, and recent updates, this lovely property is perfectly suited to modern family living. Tucked away in a quiet, tightly held street yet just minutes from the city, this is a home that offers both lifestyle and convenience in one of Lenah Valley's most sought-after pockets.

- Land Area 646.00 square metres
- Building Area: 186.00 square metres
- Bedrooms: 4
- Bathrooms: 1
- Car Parks: 2
- Single garage

CONTACT DETAILS

Elders Hobart
5 Victoria Street
HOBART, TAS
03 6220 6999

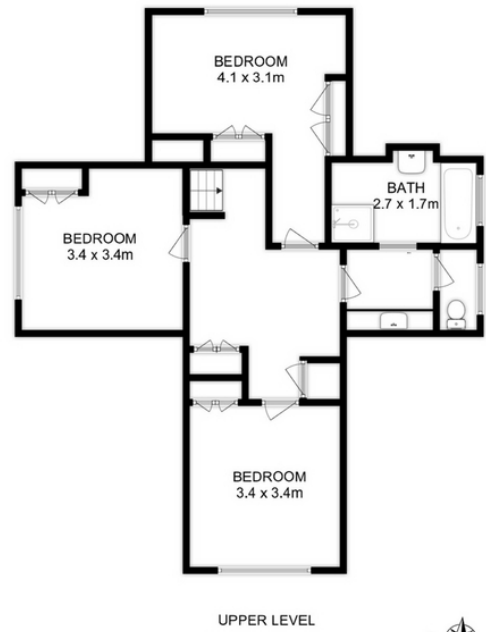
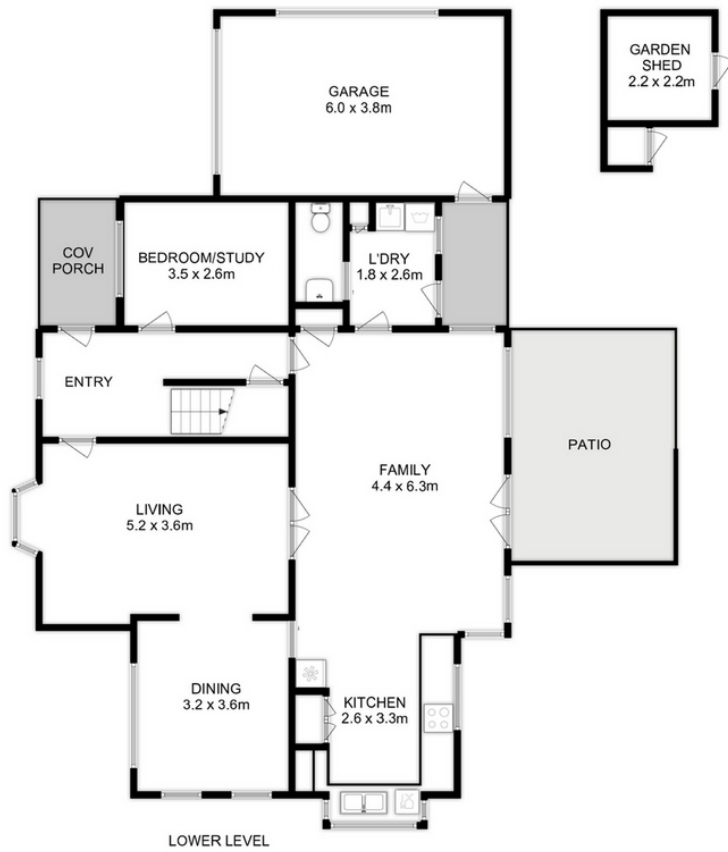
Mickey White
0419 233 169











Total Approx. Floor Area : 199 sqm
Total Approx. Outbuilding Area : 6 sqm

All measurements are internal and approximate.
This plan is a sketch for illustration, not valuation.
Produced by Open²view.com