



18 Pillinger Drive, FERN TREE, TAS 7054

Bayles Gate – a home of heritage and heart

Gracing the scenic route to the revered heights of kunanyi / Mount Wellington stands Bayles Gate, a distinguished residence built in 1974, echoing the grace of a bygone era. This classic family abode is steeped in character, with its separate kitchen and dining quarters crowned by raked ceilings and opening onto a generous timber deck – an inviting space bathed in natural light and airiness.

TYPE: Sold

INTERNET ID: R24661915

SALE DETAILS

Offers over \$795,000

The lounge, also adorned with lofty ceilings, features a charming arched window that gazes out upon gardens reminiscent of a gentler time. These gardens, lovingly crafted in the 1970s, are laced with stone walls, winding paths, and steps, and host a tapestry of rare European and native flora that burst into life each spring.

Within, four bedrooms offer comfort and versatility, one delightfully arranged as a loft with a cosy sitting nook below, perfect for quiet reflection or spirited conversation.

Perched 400 metres above sea level and a mere 10 kilometres from the city's heart, Fern Tree is Hobart's Mountain suburb, named for its verdant rainforest ferns. Here, winter brings a gentle dusting of snow, and summer offers cool respite. It is a sanctuary of nature, where pademelons, quolls, echidnas, bandicoots, owls, and even the elusive Tasmanian devil roam freely. Though secluded, the community is warm and welcoming.

Fern Tree is a close-knit enclave where neighbours gather at the tavern for hearty fare or meet at the community hall for yoga, playgroups, bush care, and the cherished carols by candlelight. Children delight in the newly restored nature playground, and families stroll the rainforest trail along Pillinger Drive, weaving through the lush undergrowth.

Bayles Gate is nestled amidst some of Tasmania's finest walking and biking trailsâ##Pipeline Track, Silver Falls, the Springs, and the summit of kunanyi / Mount Wellington. From the doorstep, one can wander through the rainforest to the tavern or playground, embracing the tranquillity and splendour of the land.

The name Bayles Gate pays homage to a 12th-century British medieval stone courtyard, famed for its arched windowsâ##an architectural echo found in the home's facade. This is not merely a house, but a place where history, nature, and community intertwine.

Come and take a look at this peaceful haven situated on just under half an acre privacy, you will love what this property has to offer.

Please note for safety at open for inspections: there is minimal parking on Pillinger Road at this location, so please be mindful.

- Land Area 1,977.00 square metre
- Building Area: 130.00 square metres
- Bedrooms: 4
- Bathrooms: 1
- Car Parks: 2
- Single garage
- Single carport

CONTACT DETAILS

Elders Hobart
5 Victoria Street
HOBART, TAS
03 6220 6999

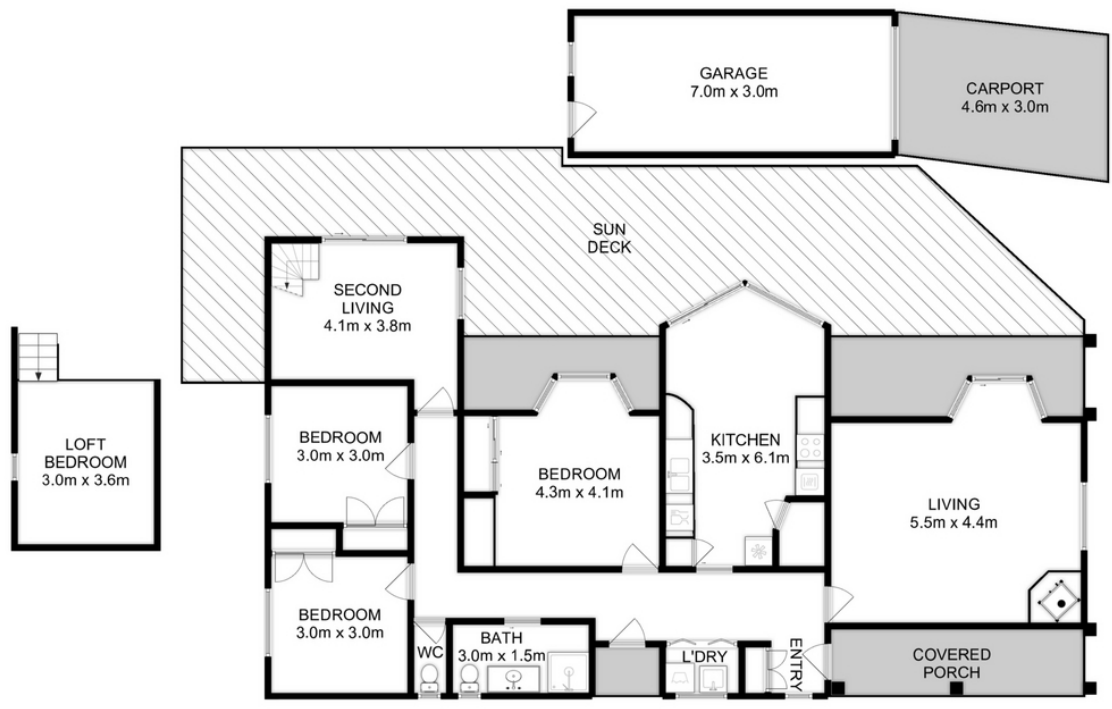
Renee Vanson
0417 535 112











Total Approx. Floor Area : 144 sqm
Total Approx. Outbuilding Area : 21 sqm

All measurements are internal and approximate.
This plan is a sketch for illustration, not valuation.
Produced by Open2view.com