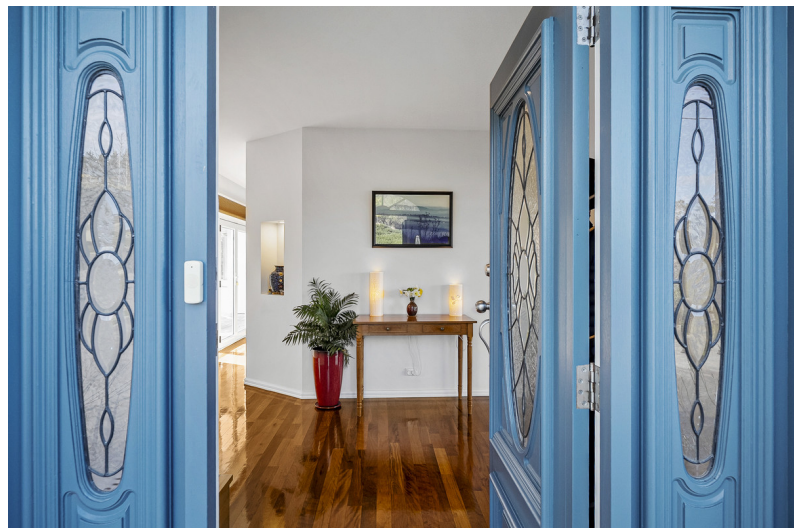




Outline indicative only



23 Hillview Drive, MARGATE, TAS 7054

A home designed to embrace the bay

Perched in a quiet cul-de-sac and designed to embrace its spectacular setting, this is a home that offers comfort, space, and a lifestyle to envy. With sweeping views across North West Bay, the D'Entrecasteaux Channel and Bruny Island, every day begins and ends with a breathtaking outlook that brings a sense of calm and connection to nature.

Inside, the home radiates warmth and character. Beautiful ironwood floors and raised

TYPE: Sold

INTERNET ID: R24712141

SALE DETAILS

Offers over \$1,195,000

2.7m ceilings create a welcoming sense of space, while large windows draw the landscape in. From the master bedroom to the living areas, the ever-changing water views are a constant backdrop. Whether you're sharing meals in the open-plan kitchen and dining area or relaxing in the lounge by the bay window, the home is designed to celebrate both family life and quiet moments. Oversized bedrooms provide generous accommodation, while the large family bathroom includes a spa bath and glass-top vanity for style and function.

The central kitchen is a true entertainer's hub, boasting extensive stone benchtops, a brand-new 900mm gas stove, dishwasher, abundant storage, and effortless flow outdoors. Double doors lead to decks on either side—one to greet the morning sun and sparkling water views, the other to enjoy the warmth of the afternoon sun.

The outdoor lifestyle is further enhanced by a unique entertaining space with aggregate concrete finish, built-in barbecue, and a large wood fire—ideal for gatherings year-round. Set on a landscaped acre, the property strikes the perfect balance between privacy, space, and easy maintenance, offering a touch of rural charm without the upkeep of larger acreage.

Practicality hasn't been overlooked, with a high-clearance garage purpose-built to accommodate boats, caravans, or extra vehicles, complete with a wood fire. With the Dru Point boat ramp and Bicentennial Park just minutes away, and a friendly neighbourhood around you, the location only adds to the appeal.

Meticulously maintained and offering a lifestyle rich in comfort, space, and connection to its stunning surroundings, this is a home that truly stands out in Margate.

- Land Area 4,000.00 square metres
- Building Area: 226.00 square metres
- Bedrooms: 4
- Bathrooms: 2
- Car Parks: 4
- Double garage

CONTACT DETAILS

Elders Hobart
5 Victoria Street
HOBART, TAS
03 6220 6999

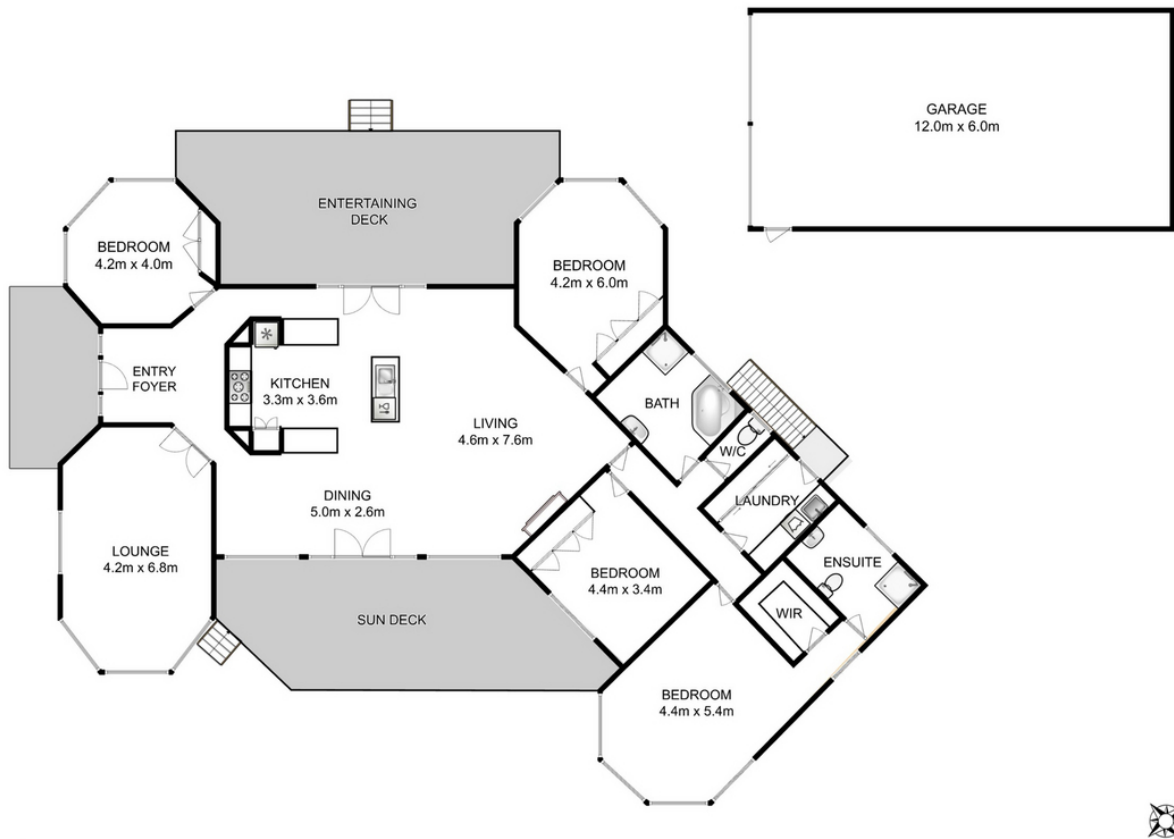
Mickey White
0419 233 169











Total Approx. Floor Area : 226 sqm
Total Approx. Outbuilding Area : 72 sqm

All measurements are internal and approximate.
This plan is a sketch for illustration, not valuation.
Produced by Open2view.com