



## 67 Crystal Downs Drive, BLACKMANS BAY, TAS 7052

### Versatile family living

This beautifully presented home combines modern updates with clever design, making it a perfect fit for families and those seeking both comfort and flexibility.

All three bedrooms are generously sized and feature brand-new built-in robes, while the clever three-way bathroom layout is ideal for busy households. Warm spotted gum engineered timber floors add style and quality throughout, complemented by a fresh,

**TYPE:** Sold

**INTERNET ID:** R24713263

**SALE DETAILS**

**Offers over \$735,000**

modern feel thanks to brand-new kitchen appliances.

Living and entertaining flow seamlessly, with the open-plan areas extending out to a tiled entertaining deck — a fantastic spot for family gatherings or relaxing outdoors. The established gardens add charm and practicality, with espaliered apples, pears and apricots, plus a thriving apricot tree in the backyard. A good-sized garden shed provides handy storage or hobby space, while a single carport adds everyday convenience.

Downstairs, the versatility of this property truly shines. A rumpus or teenage retreat with its own toilet offers an ideal space for family living, guests, or even a home office. In addition, the expansive, dry under-house storage area is a valuable bonus.

Positioned on a level block in a quiet, family-friendly part of Blackmans Bay, this home offers a lifestyle that balances practicality and presentation in equal measure. With its combination of space, modern touches, and versatility, it's a property that's sure to attract strong interest.

- Land Area 847.00 square metres
- Building Area: 102.00 square metres
- Bedrooms: 3
- Bathrooms: 1
- Car Parks: 2
- Single carport

#### CONTACT DETAILS

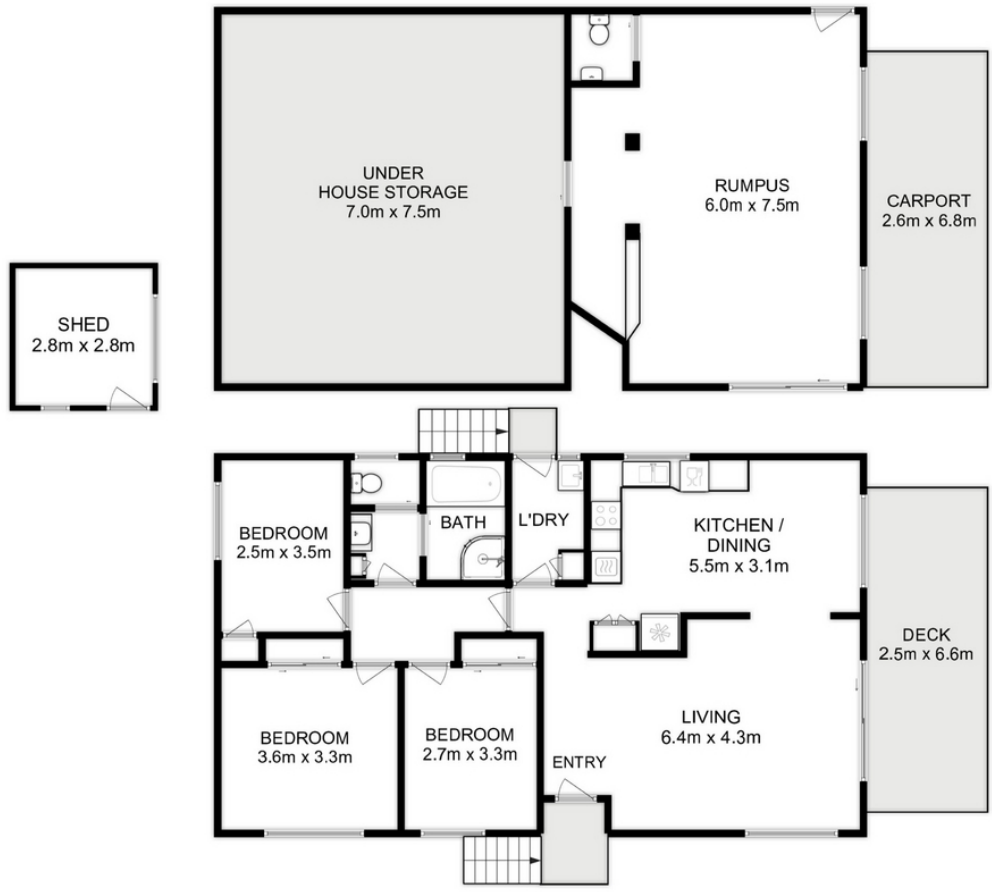
**Elders Hobart**  
5 Victoria Street  
HOBART, TAS  
03 6220 6999

**Warren Lashmar**  
0427 788 205









Total Approx. Floor Area : 102 sqm  
Total Approx. Rumpus & Storage Area : 102 sqm

All measurements are internal and approximate.  
This plan is a sketch for illustration, not valuation.  
Produced by Open2view.com