



## 7 Maria Street, SWANSEA, TAS 7190

High quality & affordable property

- \* Elevated site on 693 square metres
- \* Very popular cafe and restaurant
- \* In the town centre

**TYPE:** For Sale  
**INTERNET ID:** R24714828  
**SALE DETAILS**

The particulars contained herein are supplied for information only and shall not be taken as a representation in any respect on the part of the vendor or its agent. Interested parties should contact the nominated person or office for full and current details.

\* Only 100 metres from the beach

Located on an elevated site on the corner of Franklin Street and Maria Street in the town centre of Swansea on Tasmania's East Coast.

This very popular and stylish eatery includes a main dining area, private dining room, commercial kitchen and bar, and a large external courtyard overlooking the main road.

Vehicle access is provided from Maria Street where there are 2 car spaces. There is plenty of customer parking along Maria Street.

This quality property was originally built circa 1912 as the Commercial Bank of Australia Ltd. Subsequent uses included a residence until the 1970s, then an antique shop, rug shop, and finally its current use as a cafe/restaurant.

The cafe building incorporates a former residence which is now utilised for customers. A separate shed was previously used as a bedsit.

This striking building is aesthetically attractive, and the business is very successful.

However, due to personal circumstances the lease will not be renewed so vacant possession will be available from 17th February 2026.

Please contact Leanne Dann for further details or to arrange an inspection.

- Land Area 693.00 square metres
- Building Area: 149.00 square metres
- Bedrooms: 1
- Bathrooms: 1
- Car Parks: 2

Offers over \$850,000

#### CONTACT DETAILS

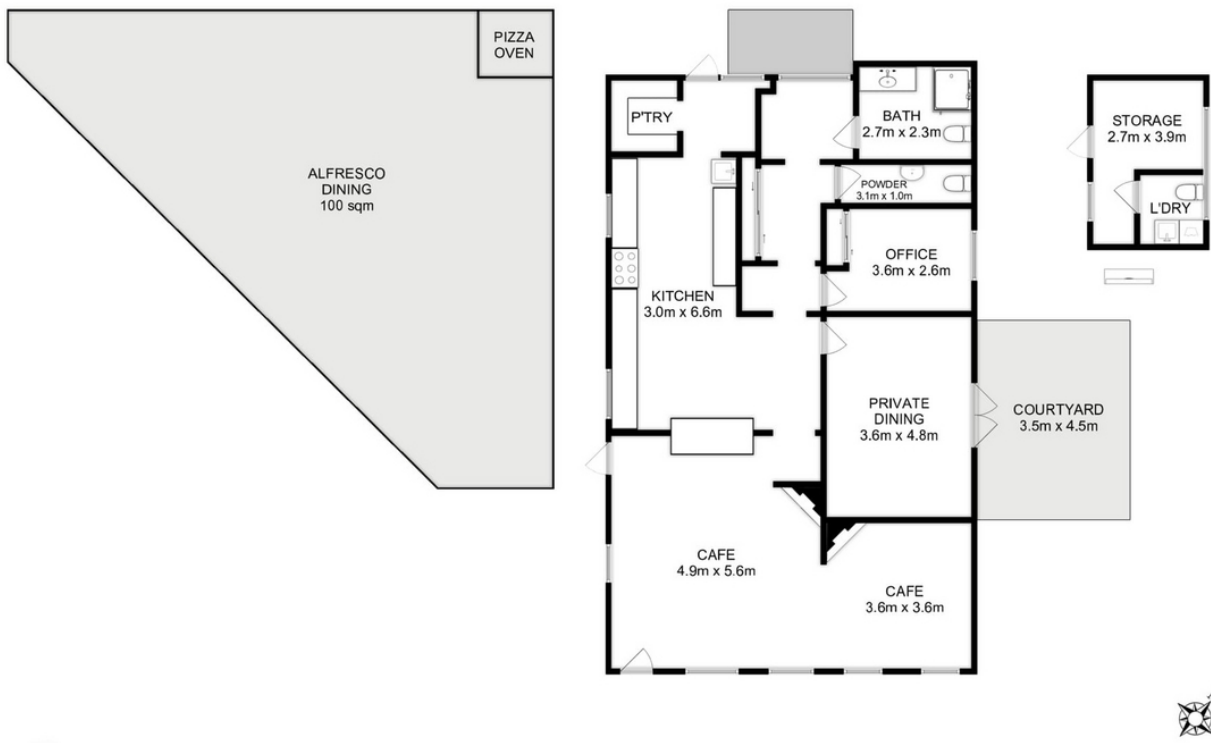
**Elders Hobart**  
5 Victoria Street  
HOBART, TAS  
03 6220 6999

**Leanne Dann**  
0417 128 048









Total Approx. Floor Area : 136 sqm  
Total Approx. Outbuilding Area : 13 sqm

All measurements are internal and approximate.  
This plan is a sketch for illustration, not valuation.  
Produced by Open2view.com