



13 Battery Square, BATTERY POINT, TAS 7004

Battery Point convenience, ground-floor ease

Positioned in exclusive Battery Point, 13/13 Battery Square pairs radiant easterly sun with calming river outlooks and a walk-everywhere lifestyle. From your door, a one-minute stroll through Arthur Circus lands you in the heart of Battery Point Village—home to many of Hobart's finest cafes and eateries—while the same easy walk in the other direction delivers you to Salamanca Place, Princes Park and the waterfront's iconic market and festivals.

TYPE: For Sale

INTERNET ID: R24748246

SALE DETAILS

Offers over \$649,000

Renovated and light-filled, the ground-floor layout centres on open-plan living/dining and kitchen, finished in a neutral palette with gleaming timber floors and new blinds. Double French doors spill onto the balcony for effortless indoor-outdoor flow. The kitchen combines stainless-steel and laminated timber benchtops, European appliances and excellent storage.

The serene main bedroom features mirrored built-in robes and direct access to the bathroom with shower, vanity, WC and a European laundry. A flexible second bedroom or study enjoys lovely natural light. With near-level entry, low-maintenance finishes, storage options inside and out, and a valuable undercover car park, this is an ideal city base, smart investment or effortless downsizer's haven in one of Hobart's most tightly held enclaves.

Minutes to Battery Point Village, Salamanca Place and Princes Park

Sun-washed open-plan living with French doors to the balcony

Quality kitchen: stainless & timber benchtops, European appliances, great storage

Ground-floor convenience, low maintenance, storage options and undercover parking

- Land Area 57.00 square metres
- Building Area: 57.00 square metres
- Bedrooms: 2
- Bathrooms: 1
- Single carport

CONTACT DETAILS

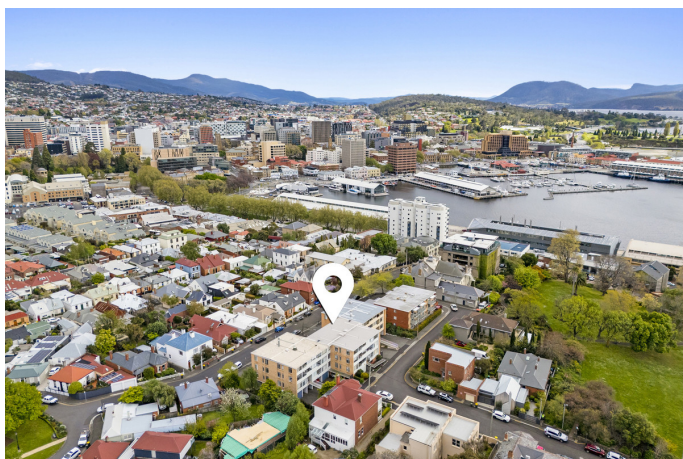
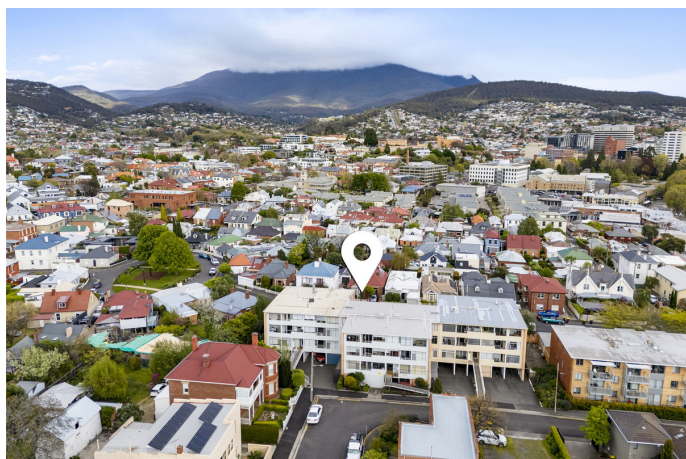
Elders Hobart
5 Victoria Street
HOBART, TAS
03 6220 6999

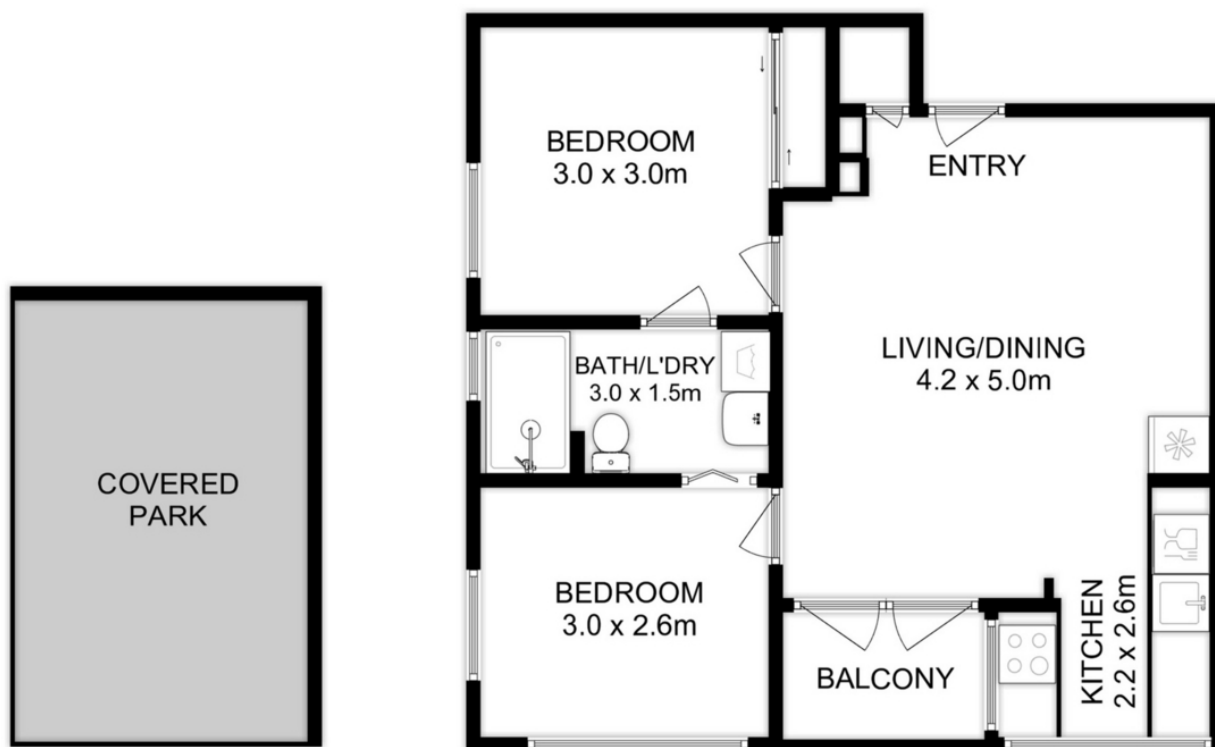
Rorie M Auld
0413 887 009











Total Approx. Floor Area : 58 sqm



All measurements are internal and approximate.
This plan is a sketch for illustration, not valuation.
Produced by Open²view.com