



17 Carnation Terrace, KINGSTON, TAS 7050

Contemporary family living with glorious mountain views

Bright, spacious and designed for modern living, this impressive home offers up to five bedrooms, three bathrooms and multiple living spaces, perfectly suited to families who value both comfort and lifestyle. Positioned on a generous north-facing block, the home enjoys all-day sun, with double glazing throughout ensuring year-round comfort and energy efficiency.

TYPE: For Sale

INTERNET ID: R24749713

SALE DETAILS

Offers over \$1,375,000

The open-plan living areas are enhanced by soaring 2.7-metre ceilings and expansive windows that capture natural light and frame views of the surrounding landscape. At the heart of the home, the stylish kitchen is equipped with quality appliances and abundant bench space, flowing seamlessly to the rear garden and expansive entertaining deck. From here, panoramic mountain views create a breathtaking backdrop â## whether you're hosting gatherings or enjoying quiet family time.

The accommodation is equally impressive, with up to five generous bedrooms and three well-appointed bathrooms, designed to meet the needs of growing families or those who love to host guests. Outdoors, the landscaped gardens are both beautiful and practical, featuring vegetable beds, an assortment of fruit trees, and a large swim spa for an added touch of luxury.

Situated in a peaceful yet central pocket of Kingston, the property combines the convenience of local shops, schools and services with the feel of a private retreat.

Stylish, spacious and thoughtfully designed, this is a home that truly brings together modern comfort, natural beauty and family lifestyle.

- Land Area 2,066.00 square metres
- Building Area: 346.00 square metres
- Bedrooms: 5
- Bathrooms: 3
- Car Parks: 4
- Double garage

CONTACT DETAILS

Elders Hobart
5 Victoria Street
HOBART, TAS
03 6220 6999

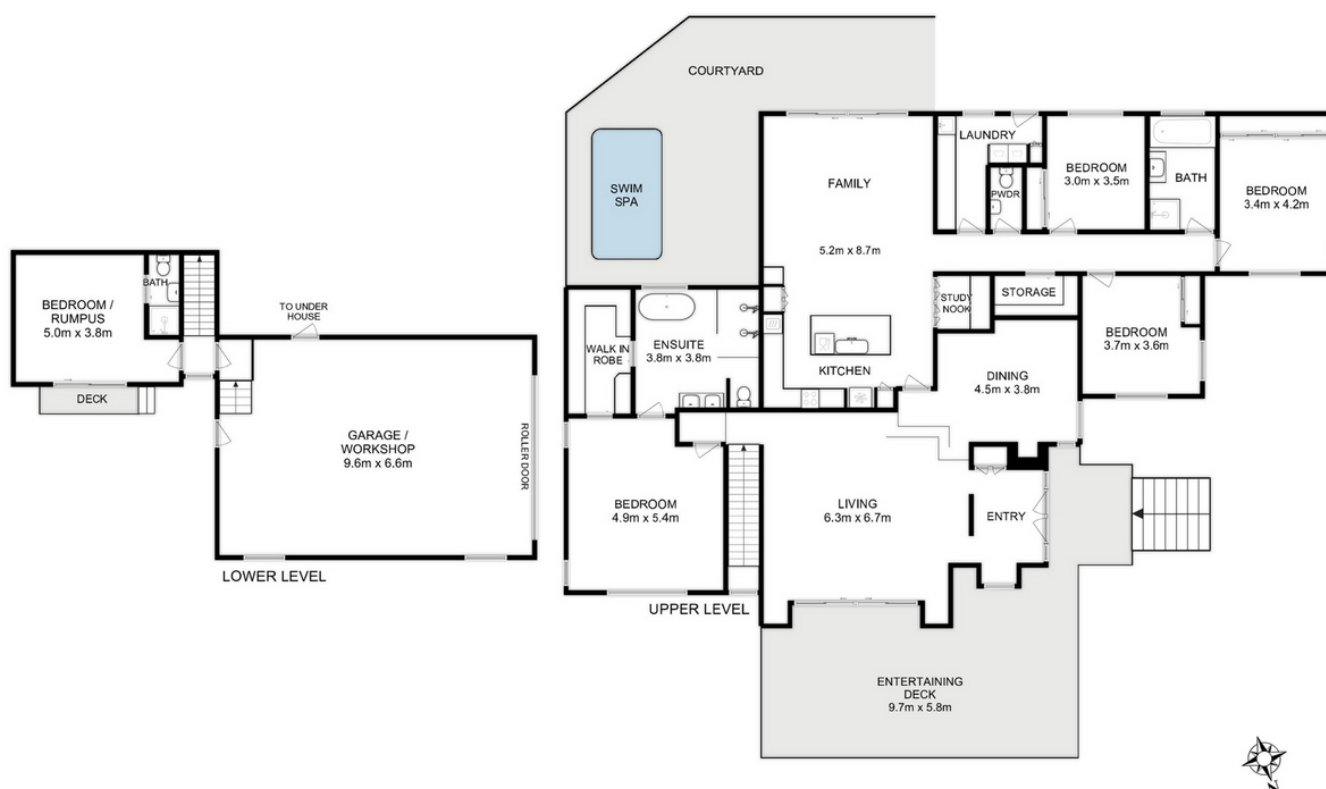
Mickey White
0419 233 169











Total Approx. Floor Area (Incl. Garage) : 346 sqm

All measurements are internal and approximate.
This plan is a sketch for illustration, not valuation.
Produced by Open2view.com