



## 10 Dollery Court, BRIGHTON, TAS 7030

### Affordable family living

Perfectly positioned in the fast-growing suburb of Brighton, this classic 1950s home offers comfort, space and outstanding value for families and investors alike.

Beautifully maintained, the home features polished timber floorboards throughout and a spacious living area equipped with both wood heating and a reverse cycle heat pump for year round comfort. The well designed floorplan includes three generous bedrooms,

**TYPE:** For Sale

**INTERNET ID:** R24749765

**SALE DETAILS**

**Offers over \$525,000**

The particulars contained herein are supplied for information only and shall not be taken as a representation in any respect on the part of the vendor or its agent. Interested parties should contact the nominated person or office for full and current details.

each complete with built-in robes, and a family bathroom with separate shower and bath, along with a separate toilet and laundry for added convenience.

Set on a generous 642 sqm landscaped and fully secure allotment, this property provides the ideal environment for children and pets to play safely. Outdoor living is well catered for with an undercover BBQ area, while the impressive 9m x 10m garage/workshop with power offers ample space for vehicles, storage, or hobbies.

Located just 26km from the Hobart CBD, Brighton continues to thrive with quality schools, shops, and excellent transport links, including the new Bridgewater Bridge and dual-lane highway for an easy commute.

A wonderful opportunity to secure an affordable family home or smart investment in a high-growth area. Call today.

- Land Area 642.00 square metres
- Building Area: 104.00 square metres
- Bedrooms: 3
- Bathrooms: 1
- Car Parks: 2
- 4 car garage
- Floorboards

#### CONTACT DETAILS

**Elders Hobart**  
5 Victoria Street  
HOBART, TAS  
03 6220 6999

**Jodi Hansson**  
0409 976 994



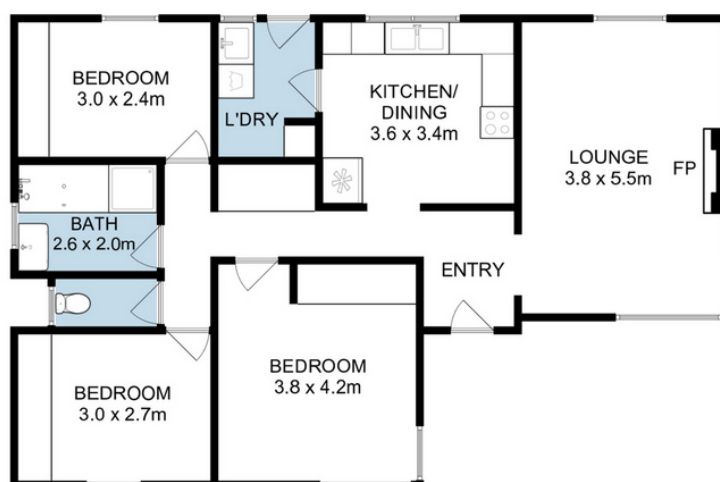
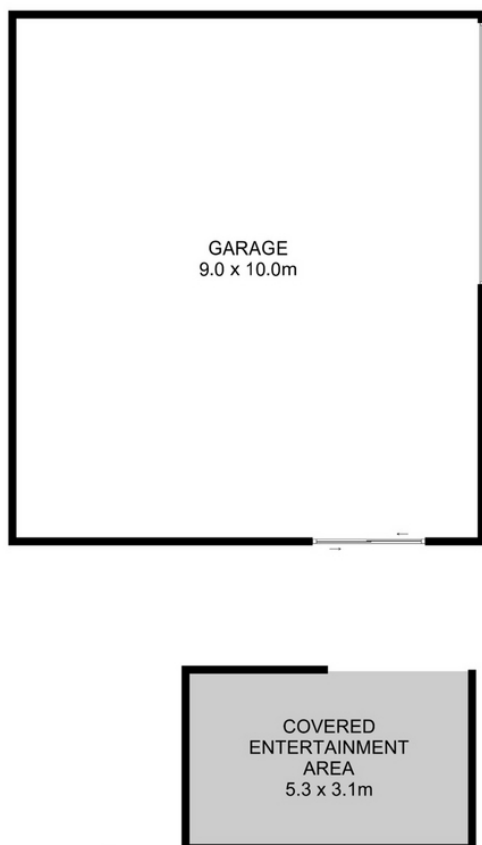












Total Approx. Floor Area :104 sqm  
Total Approx. Outbuilding Area : 84 sqm

All measurements are internal and approximate.  
This plan is a sketch for illustration, not valuation.  
Produced by Open<sup>2</sup>view.com