



27 Peppermint Place, MARGATE, TAS 7054

Low-maintenance living with shed, space and convenience

Set in a quiet cul-de-sac just moments from Dru Point and the boat ramp, this single-level home offers a relaxed lifestyle with all the essentials for easy family living.

Freshly updated, the property features a newly renovated kitchen with modern finishes and an upgraded bathroom, ensuring comfort and style throughout. Three bedrooms provide practical accommodation, while the light-filled living spaces create a welcoming

TYPE: For Sale

INTERNET ID: R24749766

SALE DETAILS

Offers over \$735,000

The particulars contained herein are supplied for information only and shall not be taken as a representation in any respect on the part of the vendor or its agent. Interested parties should contact the nominated person or office for full and current details.

feel.

Positioned on a large, level block, the home offers excellent outdoor potential with plenty of room for kids, pets, or gardens, as well as generous off-street parking. A standout feature is the 7m x 7m double garage shed â## ideal for storage, hobbies, or workshop space.

Perfectly located close to local schools, shops, and services, this property combines convenience with lifestyle appeal, making it a fantastic opportunity for families, downsizers, or those seeking space and versatility near the water.

- Land Area 800.00 square metres
- Building Area: 98.00 square metres
- Bedrooms: 3
- Bathrooms: 1
- Car Parks: 4
- Double garage

CONTACT DETAILS

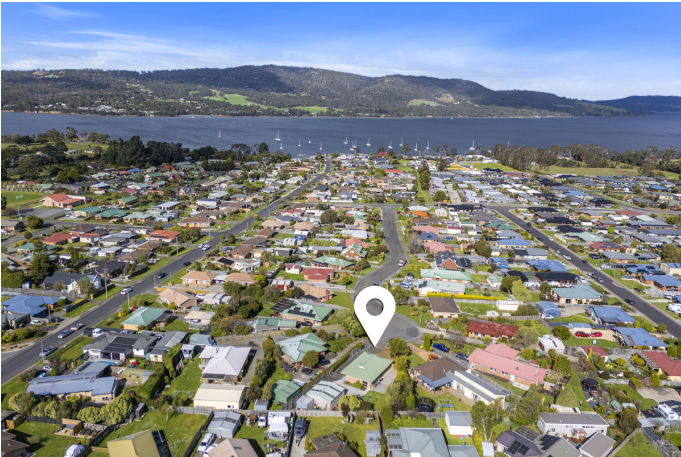
Elders Hobart
5 Victoria Street
HOBART, TAS
03 6220 6999

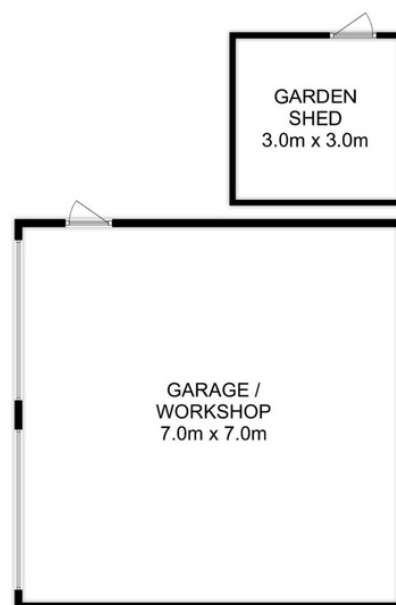
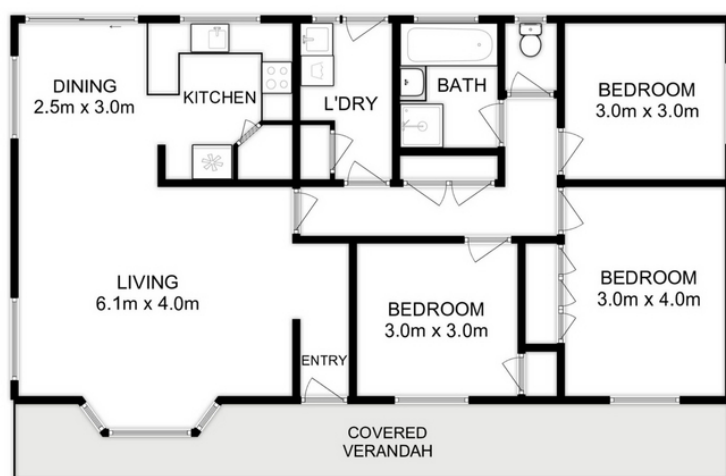
Mickey White
0419 233 169











Total Approx. Floor Area : 98 sqm
Total Approx. Outbuilding Area : 58 sqm

All measurements are internal and approximate.
This plan is a sketch for illustration, not valuation.
Produced by Open2view.com