



## 22 Norfolk Drive, HOWRAH, TAS 7018

Executive family home with spectacular views

Occupying an elevated position capturing sweeping views across the River Derwent, city and kunanyi/Mt Wellington, this immaculate executive residence offers the perfect combination of quality, comfort, and effortless living. Beautifully presented inside and out, it's a true turn-key home â## simply move in and enjoy.

**TYPE:** For Sale  
**INTERNET ID:** R24749834  
**SALE DETAILS**

Expansive windows flood the living areas with natural light while framing the spectacular panorama beyond. The open-plan kitchen, dining and living area forms the heart of the home, featuring stone benchtops, quality appliances and striking Tasmanian Oak flooring.

The layout spans two levels to maximise space and functionality. Upstairs, the master suite enjoys a spacious walk-in robe and ensuite with a double shower and luxurious bath positioned to take advantage of the outlook. Downstairs, three additional bedrooms (two with built-ins) are serviced by a contemporary bathroom. The double garage offers internal access and additional storage; for families needing additional space, the garage was previously converted to a second living/rumpus room with carpet and glass sliding doors, but has recently been reinstated as a garage. Additional off-street parking for two cars is available directly outside.

For entertaining, the home provides multiple outdoor options. A covered alfresco area and a separate decked space extend the living outdoors â## perfect for family gatherings, barbecues or relaxing in the sunshine.

The landscaped, fully fenced gardens are low maintenance, with level lawns providing space for children and pets. Positioned in a quiet, family-friendly enclave of Glebe Hill Estate, the home is within easy reach of local schools, shops, parks and Howrah Beach.

Stylish, move-in ready, and perfectly positioned to take full advantage of its elevated setting and sweeping views, this executive residence embodies quality, comfort, and modern convenience in one.

- Land Area 503.00 square metres
- Building Area: 200.00 square metres
- Bedrooms: 4
- Bathrooms: 2
- Car Parks: 2
- Double garage
- Ensuite
- Floorboards

Offers over \$1,050,000

#### CONTACT DETAILS

**Elders Hobart**  
5 Victoria Street  
HOBART, TAS  
03 6220 6999

**Rose Allie**  
0426 877 789









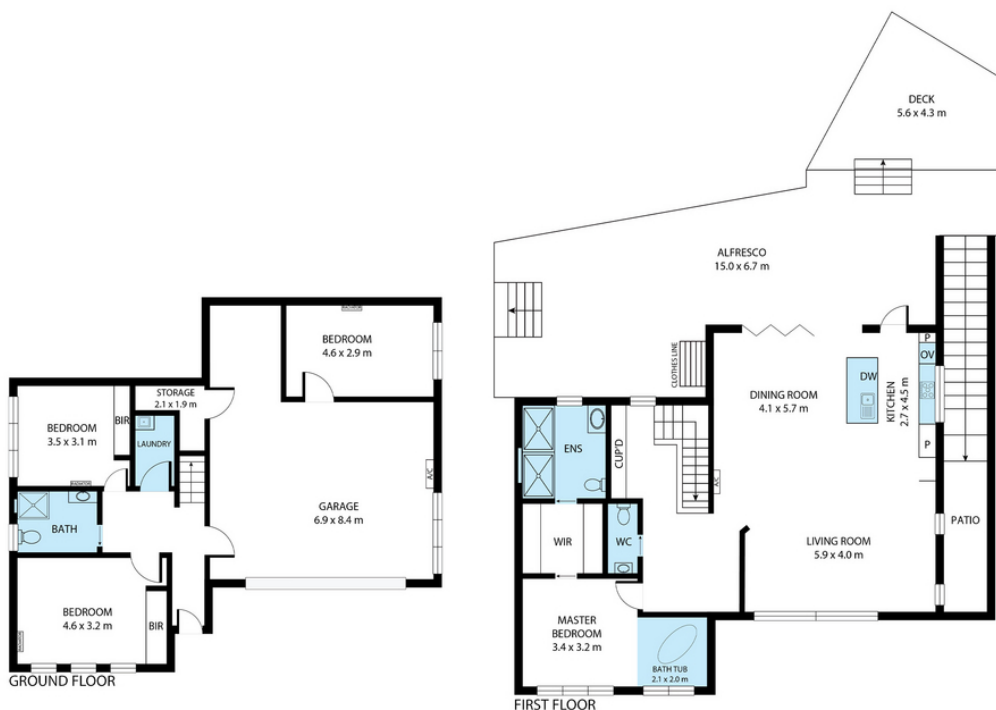












## 22 Norfolk Drive, Howrah

House area: 200 sqm

Areas and dimensions are approximate and therefore this floor plan should only be used for illustrative purposes.

Real Estate Marketing by [nextcreative.com.au](http://nextcreative.com.au)



Real Estate