



2 Mary Street, SCOTTSDALE, TAS 7260

Spacious family home with flexible living options

This quality-built, spacious brick home sits on a large, level block and offers comfort, versatility, and plenty of room to grow. The updated kitchen flows into the combined kitchen–dining area, complemented by a formal dining room or lounge, plus a second lounge/entertaining room–perfect for families needing flexible living spaces.

The renovated bathroom features a walk-in, wheelchair-accessible shower, and

TYPE: For Sale

INTERNET ID: R24791872

SALE DETAILS

Offers Over \$529,000

The particulars contained herein are supplied for information only and shall not be taken as a representation in any respect on the part of the vendor or its agent. Interested parties should contact the nominated person or office for full and current details.

accommodation includes three large bedrooms (two with built-ins) plus a smaller fourth bedroom ideal as an office, nursery, or potential ensuite conversion. Beautiful timber flooring runs throughout, enhanced by fresh paint and quality window furnishings.

Year-round comfort is provided by three reverse-cycle air conditioners. The property enjoys peaceful rural views, fertile soils, and plenty of space for a vegetable garden. A large separate area on the block offers the perfect opportunity to build a substantial shed or workshop for storing equipment, vehicles, or recreational gear, while a concrete pad off the second lounge provides added potential for outdoor entertaining or future improvements.

This home is ready for its next chapterâ##all the hard work has been done.

Simply add your new garage or workshop, then sit back and enjoy your new home and the relaxed country lifestyle Scottsdale has to offer.

Scottsdale is the services hub of North-East Tasmania, located 62 km from Launceston and 34 km from Derby, home to the world-renowned mountain bike trails. It is just 25 km from the beaches of Bridport and the acclaimed Barnbougles Dunes & Lost Farm golf courses. Known for its proud rural heritageâ##producing vegetables, dairy, beef cattle, and sheepâ##Scottsdale offers a warm, welcoming community and a wonderful place to raise a family or enjoy a peaceful, safe lifestyle in Tasmania's fresh country air.

- Land Area 875.00 square metres
- Bedrooms: 4
- Bathrooms: 1
- Double carport
- Floorboards

CONTACT DETAILS

REX Launceston
54 Cameron Street
LAUNCESTON, TAS
03 6333 7888

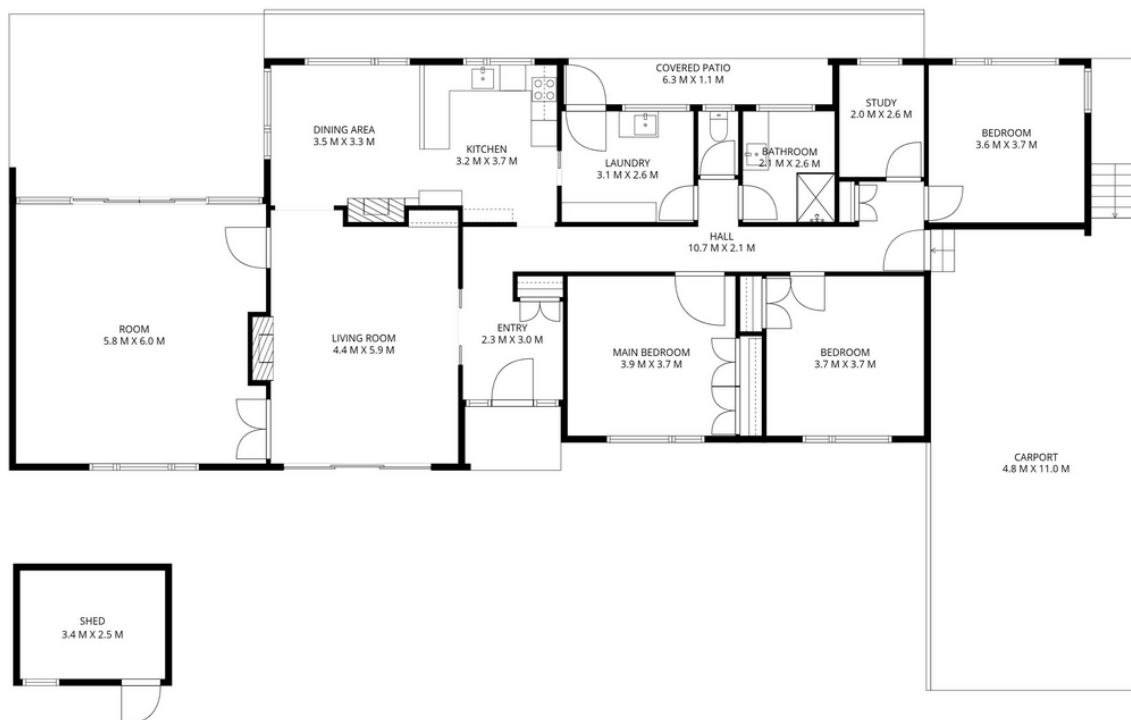
Justin Wiggins
0438 522 876











2 Mary Street, Scottsdale



Plan is not to scale. The floor plan is intended as a guide only. All information is indicative and approximate. All information is to be verified on site. The vendor and/or listing agent and provider of this floor plan are not responsible for any errors and/or omissions.

Provided by NB Media