



## 376 Argyle Drive, KINGSTON, TAS 7050

Low maintenance, over 55 living with mountain views

This solid two-bedroom brick veneer unit offers an ideal opportunity for those over 55 seeking a low-maintenance lifestyle in a secure, well-maintained complex.

Light-filled and comfortable, the open-plan living area flows onto a private balcony with mountain viewsâ##the perfect spot to relax. Inside, the lounge is welcoming and features reverse-cycle air conditioning for year-round comfort. The practical kitchen

**TYPE:** For Sale

**INTERNET ID:** R24823938

**SALE DETAILS**

**Offers over \$495,000**

The particulars contained herein are supplied for information only and shall not be taken as a representation in any respect on the part of the vendor or its agent. Interested parties should contact the nominated person or office for full and current details.

includes ample bench and cupboard space, a breakfast bar and room for casual dining.

The bathroom has been thoughtfully reconfigured for improved accessibility and both bedrooms are well sized with built-in robes. Additional hallway storage, a fully enclosed entry porch, and a large under-house storage area provide extra convenience.

Located in a friendly over 55 community, this Kingston property is within walking distance to Kingston Town Shopping Centre, local caf  s, and public transport and just 15 minutes from Hobart CBD.

Enjoy a relaxed retirement lifestyle in one of Kingston's most convenient locations.

Don't miss this fantastic opportunity to secure a low-maintenance home in a sought-after over 55 community.

- Land Area 243.00 square metres
- Building Area: 73.00 square metres
- Bedrooms: 2
- Bathrooms: 1
- Single carport

#### CONTACT DETAILS

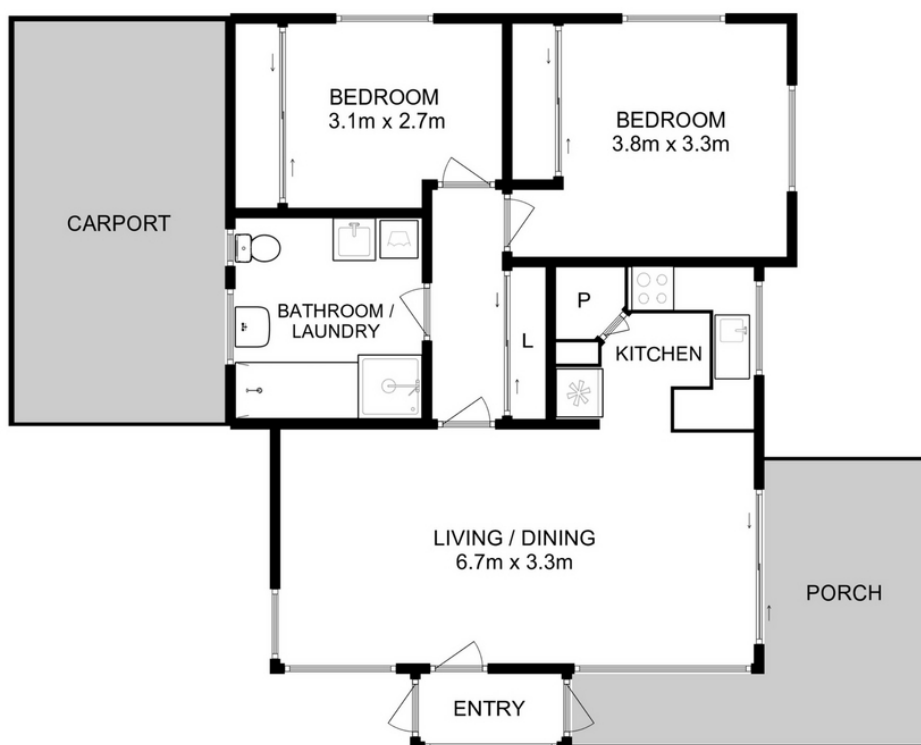
**Elders Hobart**  
5 Victoria Street  
HOBART, TAS  
03 6220 6999

**Andrew Karimalis**  
0411717069









Total Approx. Floor Area : 73 sqm

All measurements are internal and approximate.  
This plan is a sketch for illustration, not valuation.  
Produced by Open2view.com