



## 53 Charles Street, ORFORD, TAS 7190

### "Yaralla"

Built in 1959, 53 Charles Street Orford has wonderful street appeal with dual access from its Charles Street frontage and its sunny, private Walpole Street entrance.

The house has an open plan lounge and dining area running the full length of the home with views to Spring Bay Mill and the Point Home Lighthouse at Triabunna. An Ultimate wood heater provides winter comfort, and the retention of the original wood stove adds

**TYPE:** For Sale

**INTERNET ID:** R24828233

**SALE DETAILS**

**Offers over \$540,000**

The particulars contained herein are supplied for information only and shall not be taken as a representation in any respect on the part of the vendor or its agent. Interested parties should contact the nominated person or office for full and current details.



to the charm.

A main bedroom and a bungalow have allowed the current owners to enjoy family holidays for many years. The separate kitchen can also be enjoyed as another living space. There is a large rear deck with water views over Prosser Bay, and the adjoining paved brick terrace provides another sunny and relaxing outdoor space. The generous 785 sqm of land is both low maintenance and a private haven providing ample parking for cars, boat and caravan.

The home's proximity to Millingtons and West Shelly beaches, the primary school, parklands and the Orford shops enhance the coastal feel that this home exudes.

Ideal for a small family or a couple, this much-loved holiday home or permanent residence has huge appeal and is priced to sell.

- Land Area 785.00 square metres
- Building Area: 88.00 square metres
- Bedrooms: 1
- Bathrooms: 1

#### CONTACT DETAILS

**Elders Hobart**  
5 Victoria Street  
HOBART, TAS  
03 6220 6999

**Paul Heerey**  
0498 111 049







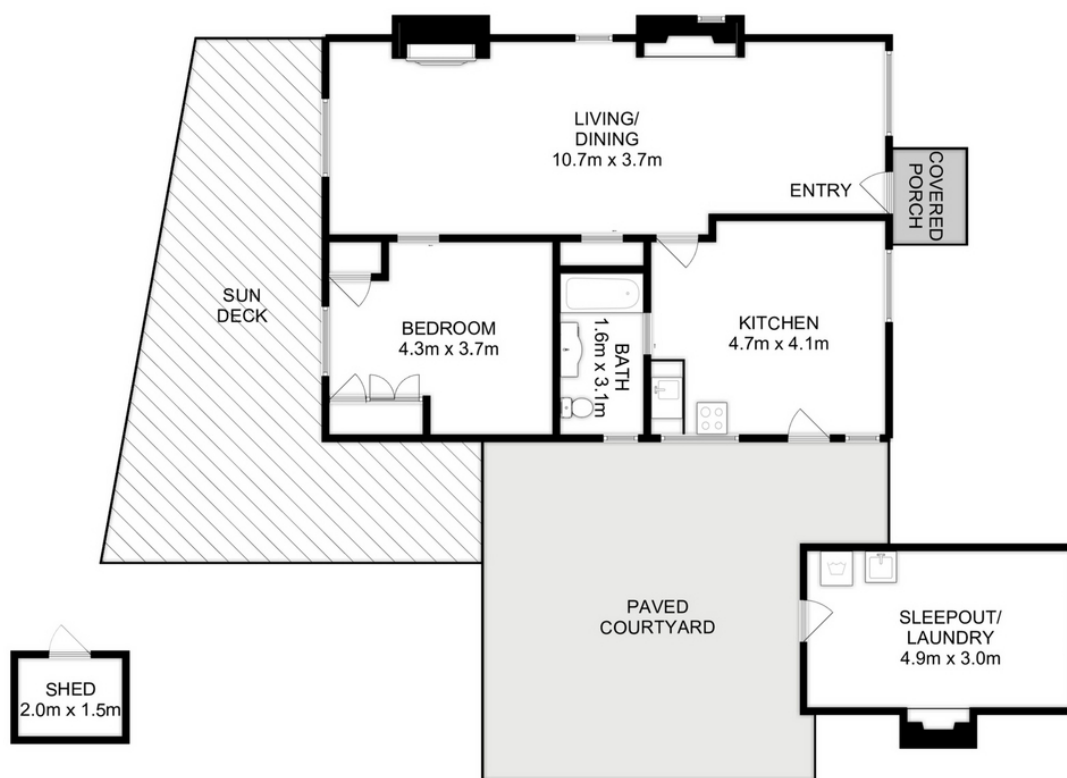












Total Approx. Floor Area : 88 sqm  
Total Approx. Outbuilding Area : 19 sqm

All measurements are internal and approximate.  
This plan is a sketch for illustration, not valuation.  
Produced by Open2view.com