



13 Windsor Street, KINGSTON BEACH, TAS 7050

Sunny, low-maintenance living in the heart of Kingston Beach

Perfectly positioned just a short stroll from Kingston Beach, local caf  s, restaurants and village conveniences, this well-presented apartment offers an easy, relaxed lifestyle in one of Hobart's most sought-after coastal suburbs.

With its sunny north-facing aspect and beautiful mountain views, the home feels bright, open and welcoming from the moment you step inside. The recent upgrades â    

TYPE: For Sale

INTERNET ID: R24830156

SALE DETAILS

Offers over \$585,000

The particulars contained herein are supplied for information only and shall not be taken as a representation in any respect on the part of the vendor or its agent. Interested parties should contact the nominated person or office for full and current details.

including a new kitchen and refurbished bathroom ## give the interiors a fresh, modern feel, making it completely move-in ready.

The open-plan living and dining area is filled with natural light and opens directly to a private balcony, providing the perfect spot for morning coffee, entertaining friends, or unwinding in the afternoon sun.

Both bedrooms include built-in robes, offering great storage, while the practical floor plan ensures effortless everyday living. The home also includes on-site parking, sits within a tidy and well-maintained complex, and enjoys excellent walkability to shops, public transport, and the beach.

Low-maintenance, light-filled and wonderfully located, 4/13 Windsor Street is ideal for first home buyers, downsizers, and investors looking to secure a quality property in the heart of Kingston Beach.

- Land Area 101.00 square metres
- Building Area: 69.00 square metres
- Bedrooms: 2
- Bathrooms: 1
- Single carport

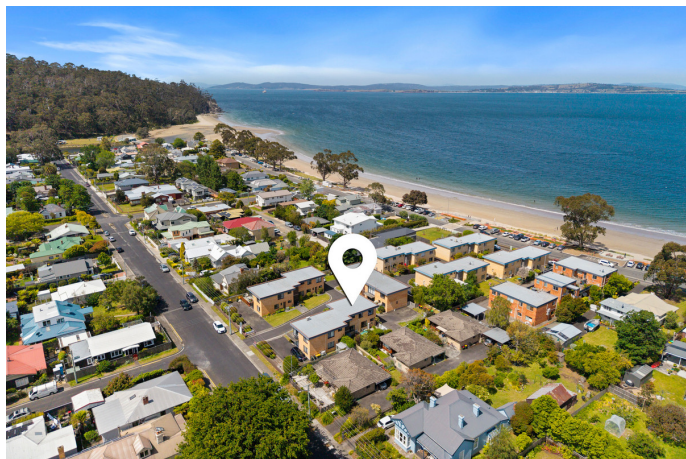
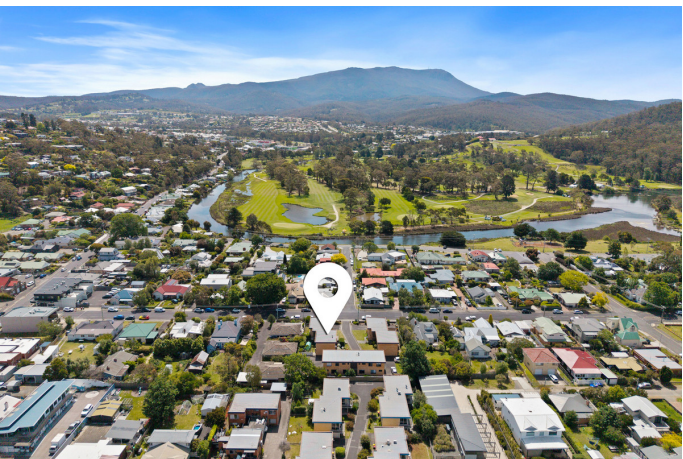
CONTACT DETAILS

Elders Hobart
5 Victoria Street
HOBART, TAS
03 6220 6999

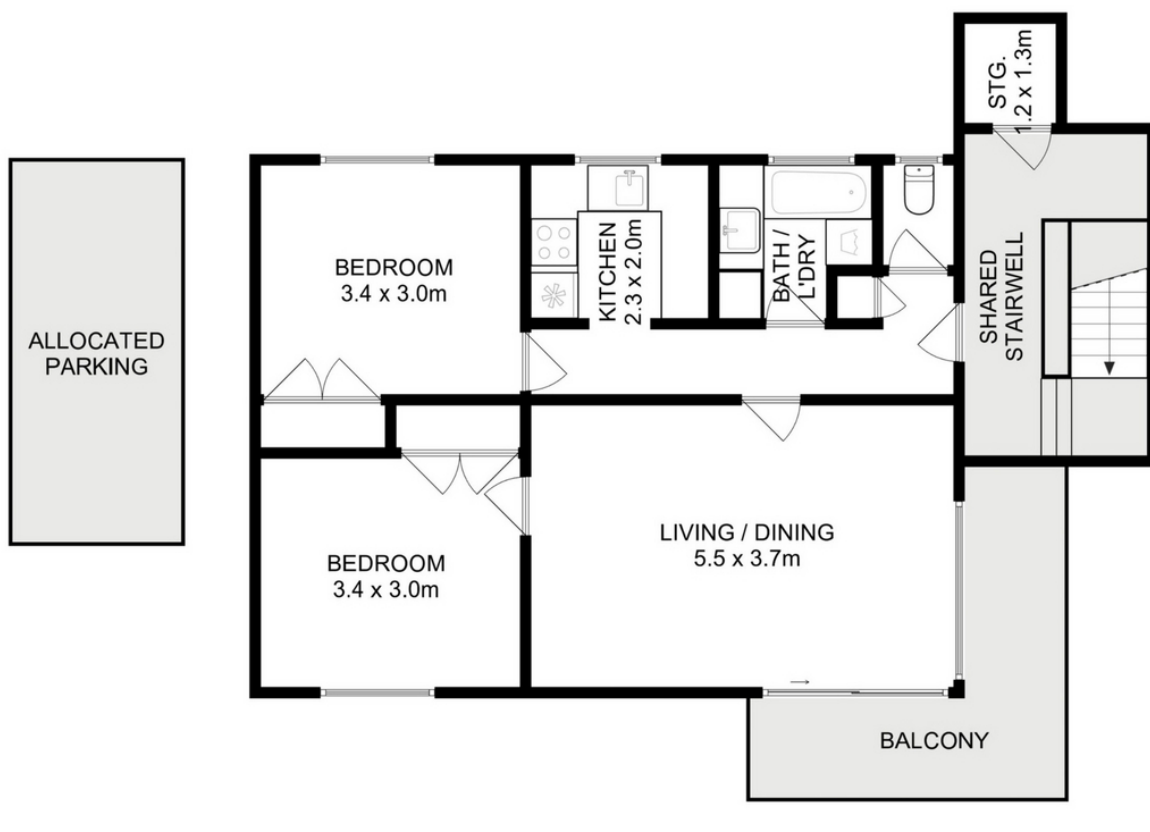
Mickey White
0419 233 169











Total Approx. Floor Area (inc. Storage) : 69 sqm

All measurements are internal and approximate.
This plan is a sketch for illustration, not valuation.
Produced by Open2view.com