

## 132 Davey Street, HOBART, TAS 7000

"Talune" an iconic sandstone residence on the CBD fringe

Elders is pleased to present Talune, 132 Davey Street - a generational heritage asset in the heart of Hobart's coveted city-fringe. This iconic Georgian sandstone residence provides 465 sqm approx. of adaptable space, complemented by two beautifully restored outbuildings, providing diversified income streams.

With flexible zoning and lease terms in place, the property suits a range of end users

**TYPE:** For Sale

**INTERNET ID:** R24834041

**SALE DETAILS**

**Offers over \$2,700,000**

The particulars contained herein are supplied for information only and shall not be taken as a representation in any respect on the part of the vendor or its agent. Interested parties should contact the nominated person or office for full and current details.



from owner-occupiers, medical professionals, consultants or investors seeking a residential conversion or value-add potential STCA. Properties of this provenance and scale are seldom brought to market, offering a unique opportunity to secure a premium freehold asset with immediate upside.

Positioned on a substantial 1,045 sqm approx landholding, the property offers a rare sense of scale for its inner-city location, further enhanced by ample off-street parking for up to 8 vehicles - a highly valuable asset for both commercial and residential use within Hobart's tightly held CBD fringe.

Please contact Todd Stevenson for further information or to arrange an inspection.

- Land Area 1,045.00 square metre
- Building Area: 465.00 square metres
- Bedrooms: 8
- Bathrooms: 4
- Car Parks: 8

#### CONTACT DETAILS

**Elders Hobart**  
5 Victoria Street  
HOBART, TAS  
03 6220 6999

**Todd Stevenson**  
0438 295 604









The particulars contained herein are supplied for information only and shall not be taken as a representation in any respect on the part of the vendor or its agent. Interested parties should contact the nominated person or office for full and current details.



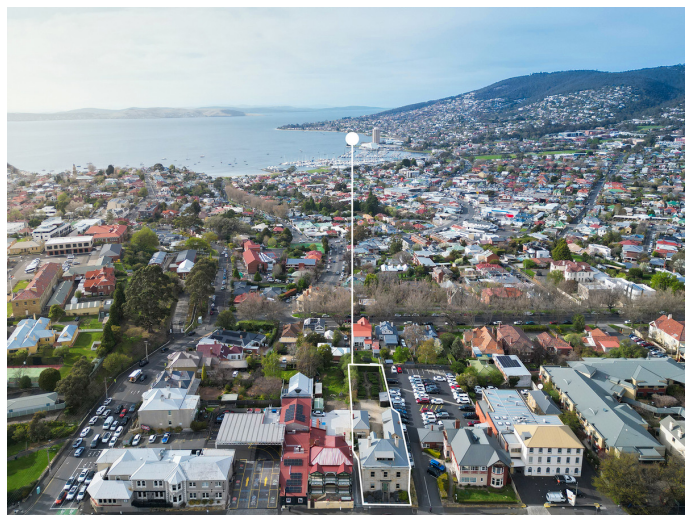






The particulars contained herein are supplied for information only and shall not be taken as a representation in any respect on the part of the vendor or its agent. Interested parties should contact the nominated person or office for full and current details.







# 132 Davey Street, Hobart

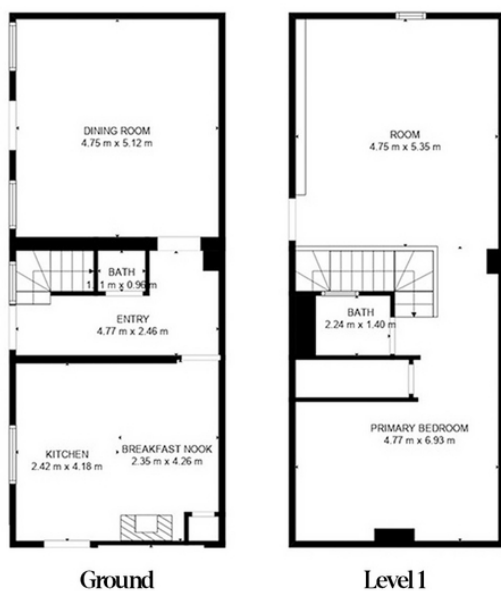
## Main Building



Approximate Floor Area: 373 sqm

## 132 Davey Street, Hobart

The Stables



Old Class Room



Approximate Floor Area: Stables: 47 sqm  
Approximate Floor Area: Old Class Room: 45 sqm