



## 33 Stanley Street, BELLERIVE, TAS 7018

Immaculate villa with panoramic water views

This immaculate villa offers a rare combination of comfort, convenience, and breathtaking views.

Enjoy expansive 180-degree vistas of the Derwent River, Ninja Stadium, and Wrest Point Casino from a home that has had only one careful owner.

**TYPE:** For Sale

**INTERNET ID:** R24841449

**SALE DETAILS**

**Offers over \$685,000**

Inside, you'll find two generously sized bedrooms with built-in wardrobes, a large blackwood kitchen with ample bench space, and a bathroom with both a separate shower and bath.

Modern comforts include a Daikin heat pump in the lounge, ducted vacuum, and NBN connection.

The property also boasts a spacious garage with storage and potential for a small workshop, plus a well-maintained garden with an entertaining area.

Set in a quiet cul-de-sac with a kids' playground at the end and close to schools, public transport, and Shoreline Shopping Centre, this villa delivers peaceful living without compromising convenience.

- Land Area 303.00 square metres
- Building Area: 105.00 square metres
- Bedrooms: 2
- Bathrooms: 1
- Single garage

#### CONTACT DETAILS

**Elders Hobart**  
5 Victoria Street  
HOBART, TAS  
03 6220 6999

**Todd Stevenson**  
0438 295 604









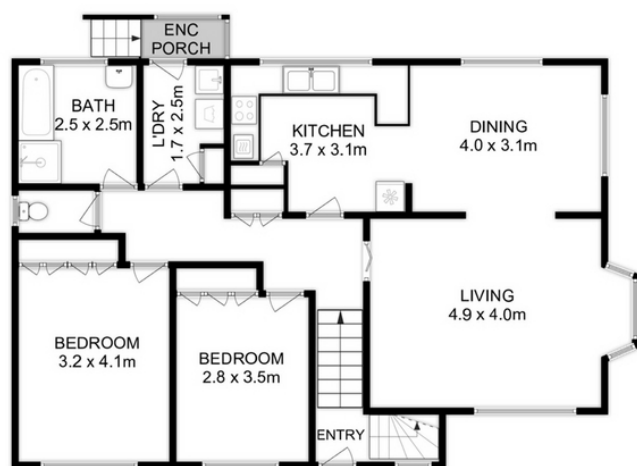




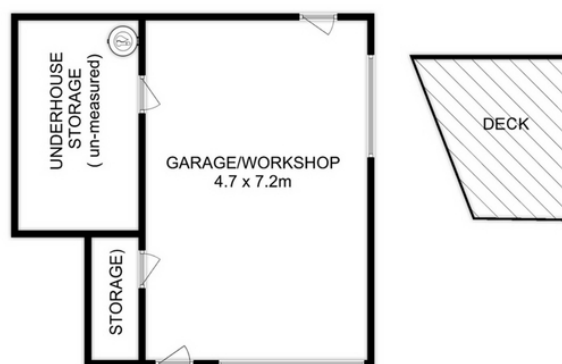








UPPER LEVEL



LOWER LEVEL



Total Approx. Floor Area : 105 sqm

Total Approx. Garage Area : 35 sqm

All measurements are internal and approximate.  
This plan is a sketch for illustration, not valuation.  
Produced by Open<sup>2</sup>view.com