



42 Gordon Street, SWANSEA, TAS 7190

Versatile Coastal Retreat Close to Beaches and Town

Enjoy uninterrupted sunsets overlooking Oyster Bay out to Freycinet National Park.

This charming white brick cottage offers a wonderful coastal ambience offering flexible living and investment appeal.

The unique multi story residence is complimented with farm chic style features such as the black wattle flooring, wood fire and stain glass windows.

Newly renovated kitchen with quality fittings.

The downstairs bedroom is generous in size has wall to wall built in wardrobe.

Upstairs is currently rented as an Airbnb with separate external entry, fully carpeted with ensuite size bathroom and adjoining deck facing the Bay.

The layout allows you to live in the downstairs while renting the upper floor, lease both levels, or simply enjoy the property as a low-maintenance coastal escape. Outside, a charming garden completes this inviting and character-filled home.

Ideally located close to town, the boat ramp, local amenities, wineries and nearby beaches, this property delivers beautiful bay views, original charm, and a truly unique offering.

Other features: Built-In Wardrobes, Close to Schools, Close to Shops, Close to Transport, Fireplace(s)

- Land Area 358.00 square metres
- Building Area: 95.00 square metres
- Bedrooms: 2
- Bathrooms: 2
- Car Parks: 2
- Floorboards

**TYPE:** For Sale

**INTERNET ID:** R24843110

**SALE DETAILS**

**\$445,000**

**CONTACT DETAILS**

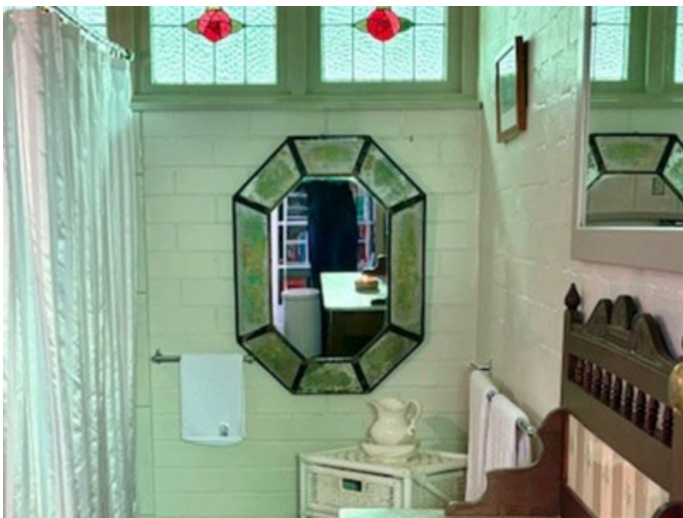
**Elders Hobart**  
5 Victoria Street  
HOBART, TAS  
03 6220 6999

**Kiri Jones**  
0400 221 818

















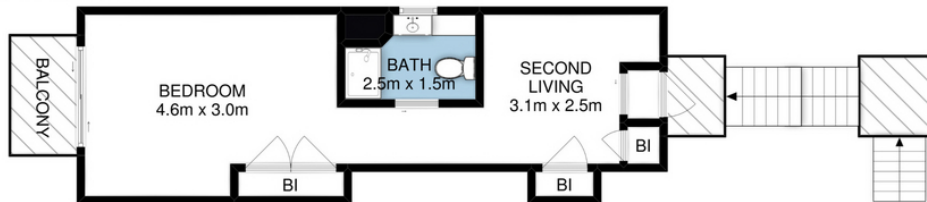




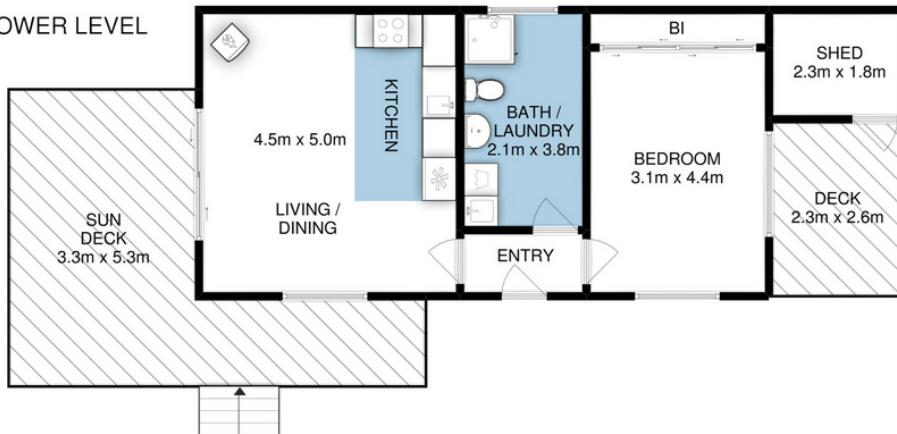


**SWANSEA**  
 1/42 Gordon Street  
 House Area : 95sqm (10.3sq)  
 Outbuilding Area : 4sqm (0.44sq)

UPPER LEVEL



LOWER LEVEL



IMPORTANT: measurements are approximate-interested parties need to verify