



15 Tahune Crescent, BLACKMANS BAY, TAS 7052

Commanding views in a coveted enclave

Situated in a highly sought-after pocket of Blackmans Bay, this beautifully presented split-level home boasts commanding 180 degree views from Mount Wellington to Blackmans Bay and across the Derwent River. Enjoy the luxury of a northerly aspect, flooding the home with natural sunlight throughout the day.

There is convenient undercover access from the double carport to the entry on the

TYPE: For Sale

INTERNET ID: R24848771

SALE DETAILS

Offers over \$1,295,000

The particulars contained herein are supplied for information only and shall not be taken as a representation in any respect on the part of the vendor or its agent. Interested parties should contact the nominated person or office for full and current details.

middle level, which is illuminated by skylights. Included in this level is the convenience of a study / potential fourth bedroom (STCA), powder room and laundry.

The upper level features a spacious open-plan kitchen, dining, and family area adorned with Tasmanian Oak floorboards, ceiling heating, and sliding doors that open to a sun-drenched entertaining deck with superb views. A generous lounge area complements this level, creating an inviting space for relaxation.

The lower level comprises three bedrooms, including a main bedroom with an ensuite and walk-in robe, as well as a main bathroom and an additional living area with access to the leafy, established backyard.

Outside, the property offers ample off-street parking, and the added benefit of a 5 kW solar system for energy efficiency.

- Land Area 625.00 square metres
- Building Area: 229.00 square metres
- Bedrooms: 3
- Bathrooms: 2
- Double carport
- Floorboards

CONTACT DETAILS

Elders Hobart
5 Victoria Street
HOBART, TAS
03 6220 6999

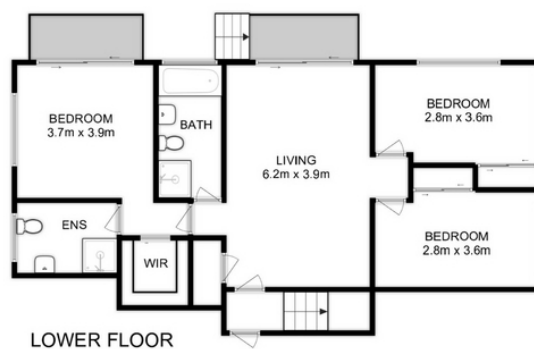
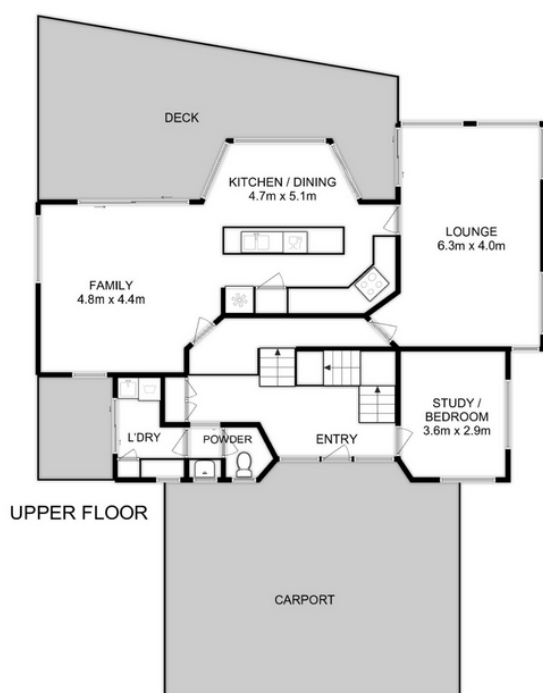
Todd Stevenson
0438 295 604











Total Approx. Floor Area : 229 sqm

All measurements are internal and approximate.
This plan is a sketch for illustration, not valuation.
Produced by Open2view.com