



## 31 High Street, LONGFORD, TAS 7301

Family home on large allotment

The particulars contained herein are supplied for information only and shall not be taken as a representation in any respect on the part of the vendor or its agent. Interested parties should contact the nominated person or office for full and current details.



Set on an approximately 1,679 sqm allotment, in the centre of Longford, this rare opportunity is ripe for the taking.

A brick and tile classic, this much-loved home has been tightly held for decades, and we are now privileged to be taking this property to the market. Presenting a range of exciting possibilities, and with a practical floorplan, three bedrooms, all double in size, and in addition two North facing expansive lounges, the home is ready for a make-over, but with an abundance of storage.

The four-car garage with workshop potential, is boasted by a separate studio, all constructed in the same period as the home, and blending seamlessly. The desirable block size which is a substantial feature of the property is level and well fenced making this private and well secured for family and pets.

This most satisfying locality, perfectly placed to enjoy the best of the important things in life, an easy stroll to schools, conveniences, shops and sports.

On a level, well fenced allotment this style of property does not come to the market often and we encourage you to act fast.

- Land Area 1,679.00 square metre
- Building Area: 118.00 square metres
- Bedrooms: 3
- Bathrooms: 1
- 4 car garage
- Single carport

**TYPE:** For Sale

**INTERNET ID:** R24854784

**SALE DETAILS**

Offers considered from  
**\$695,000**

**CONTACT DETAILS**

**REX Launceston**  
54 Cameron Street  
LAUNCESTON, TAS  
03 6333 7888

**Trudi Jones**  
0448 698 439









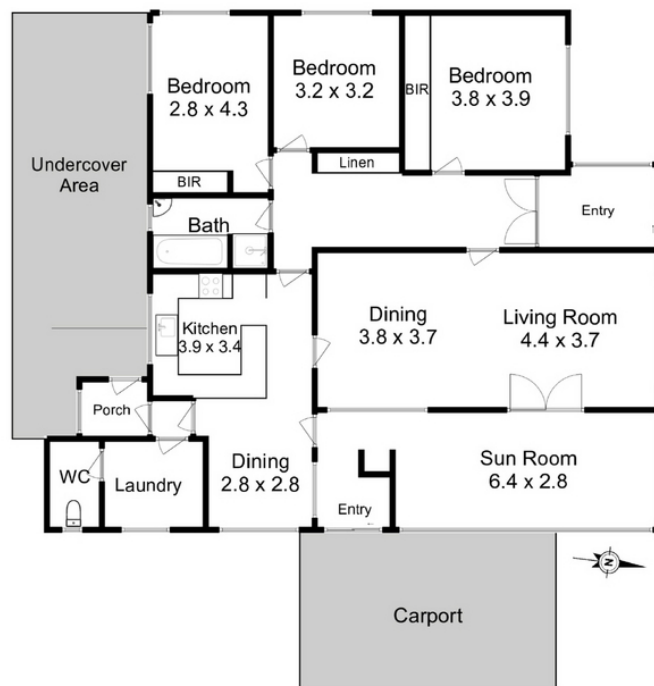
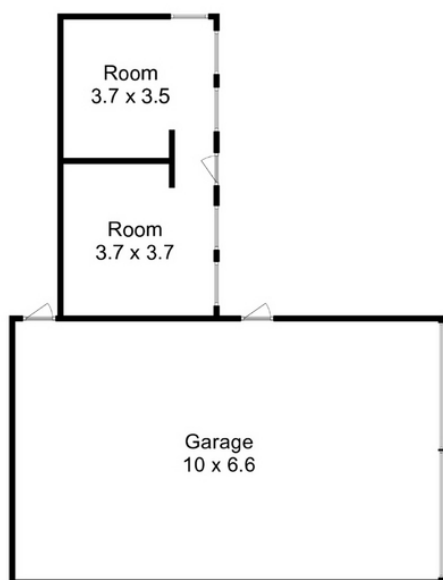












31 High Street, Longford

nzview.com.  
 ings are for display purposes  
 : This floorplan is a sketch,  
 is stated are approximate.  
 ; and layout of this  
 altered or copied

3 1 3

Total Floor Area - 161m<sup>2</sup>