



12 Bundalla Road, MARGATE, TAS 7054

Light-filled villa with private garden deck

This modern, well-presented villa offers an easy, low-maintenance lifestyle in one of Margate's most popular residential pockets. Positioned as the end unit within a neatly maintained complex, it enjoys an excellent sense of privacy and quiet, making it immediately appealing to a wide range of buyers.

The home's dual-level design is both practical and inviting. On the lower level, you'll find

TYPE: For Sale

INTERNET ID: R24859330

SALE DETAILS

Offers over \$585,000

The particulars contained herein are supplied for information only and shall not be taken as a representation in any respect on the part of the vendor or its agent. Interested parties should contact the nominated person or office for full and current details.

a generous bedroom with built-in robes, a spacious bathroom with separate shower and bath, and internal access from the single garage, which also incorporates the laundry. Upstairs, the second bedroom also features built-in storage, while the open-plan living and dining area opens to a sunny deck with water views, creating a relaxed space to unwind or entertain.

The kitchen is modern and well equipped, featuring stainless steel appliances, tiled flooring and excellent storage. A standout feature of the property is the newly built garden deck, providing a private outdoor area that adds real lifestyle value â## perfect for entertaining, gardening, or simply enjoying some quiet time outdoors.

Low maintenance, well designed and thoughtfully updated, this villa will appeal strongly to investors, first-home buyers, downsizers and couples seeking a quality home with privacy, outdoor space and water views, all in a convenient and well-connected location.

- Land Area 241.00 square metres
- Building Area: 112.00 square metres
- Bedrooms: 2
- Bathrooms: 2
- Single garage

CONTACT DETAILS

Elders Hobart
5 Victoria Street
HOBART, TAS
03 6220 6999

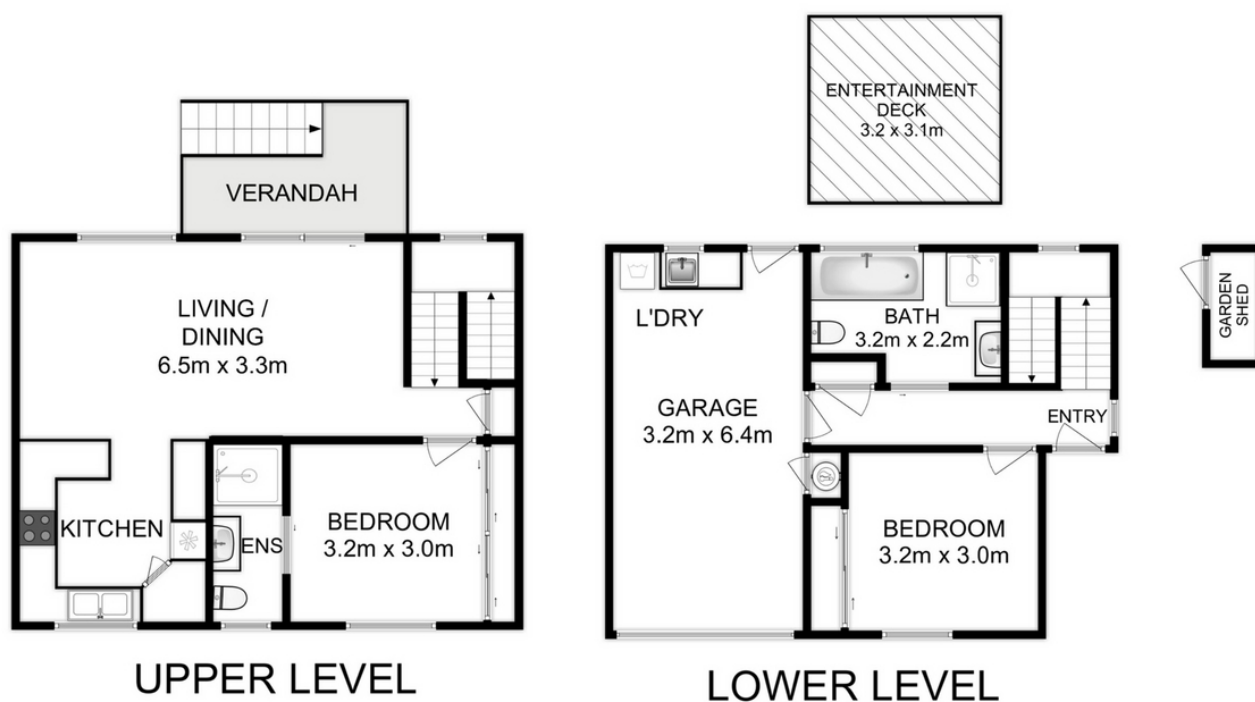
Mickey White
0419 233 169











Total Approx. Floor Area : 112 sqm
Total Approx. Outbuilding Area : 2.0 sqm



All measurements are internal and approximate.
This plan is a sketch for illustration, not valuation.
Produced by Open²view.com